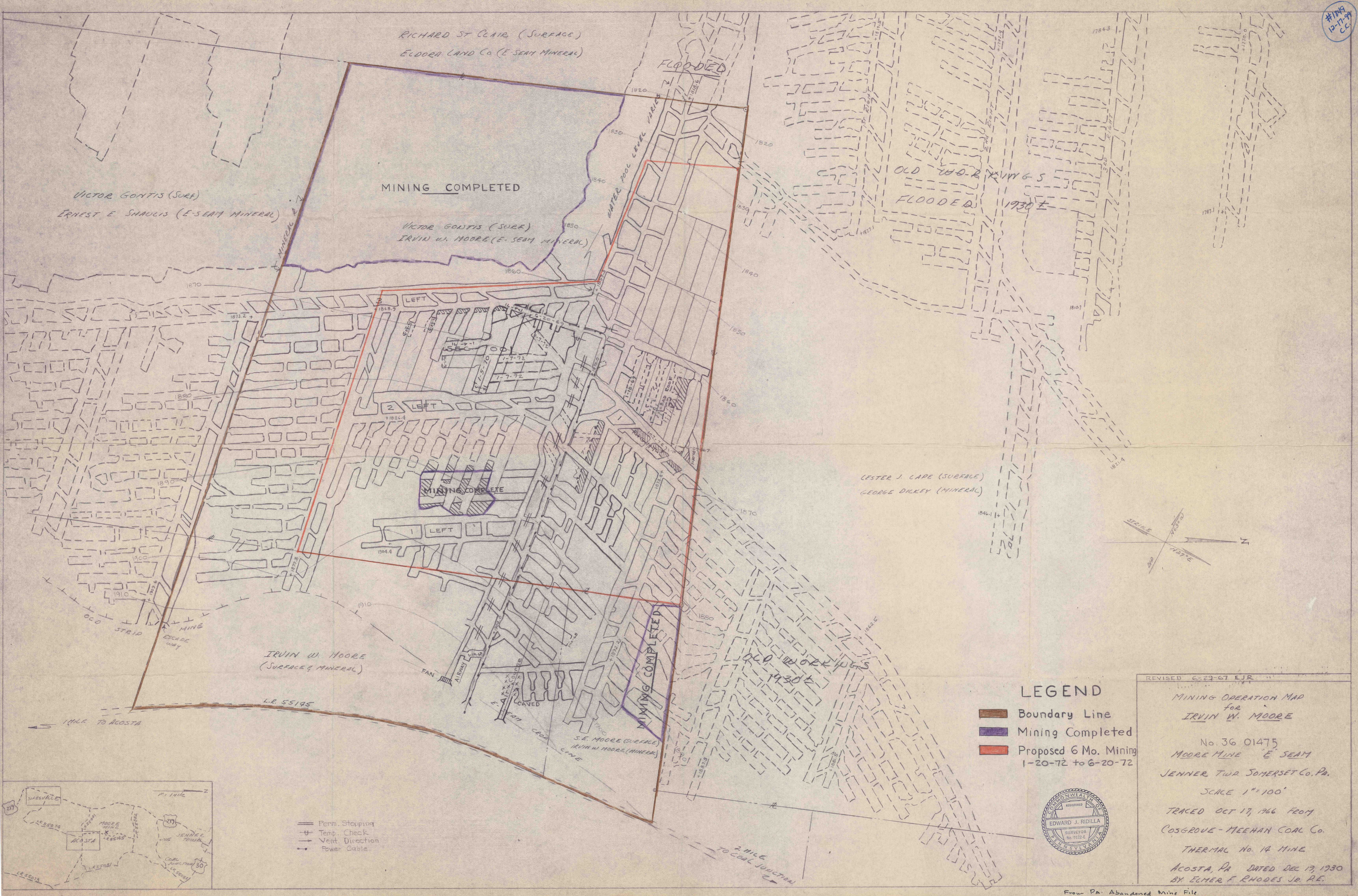


#1149  
12-17-99  
CC



RICHARD ST CLAIR (SURFACE)  
ELDORA LAND Co (E-SEAM MINERAL)

VICTOR GONTIS (SURF)  
ERNEST E SHAULIS (E-SEAM MINERAL)

MINING COMPLETED  
VICTOR GONTIS (SURF)  
IRVIN W. MOORE (E-SEAM MINERAL)

OLD WORKINGS  
FLOODED 1930±

LESTER J. LAPE (SURFACE)  
GEORGE DICKY (MINERAL)

IRVIN W. MOORE  
(SURFACE & MINERAL)

S.E. MOORE (SURFACE)  
IRVIN W. MOORE (MINERAL)

### LEGEND

- Boundary Line
- Mining Completed
- Proposed 6 Mo. Mining  
1-20-72 to 6-20-72

REVISED 6-29-67 EJR

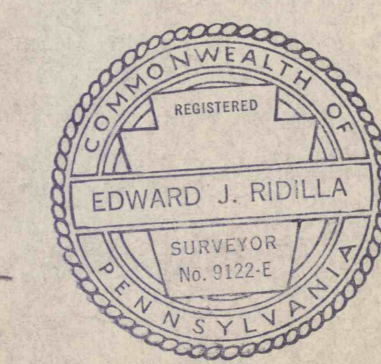
MINING OPERATION MAP  
for  
IRVIN W. MOORE

No. 36 01475  
MOORE MINE "E" SEAM  
JENNER TWP. SOMERSET CO., PA.

SCALE 1"=100'

TRACED OCT 17, 1966 FROM  
COSGROVE-MEEHAN COAL CO.

THERMAL No. 14 MINE  
ACOSTA, PA DATED DEC 19, 1930  
BY ELMER F. RHODES JR. P.E.



- Perm. Stopping
- Temp. Check
- Vent. Direction
- Power Cable

