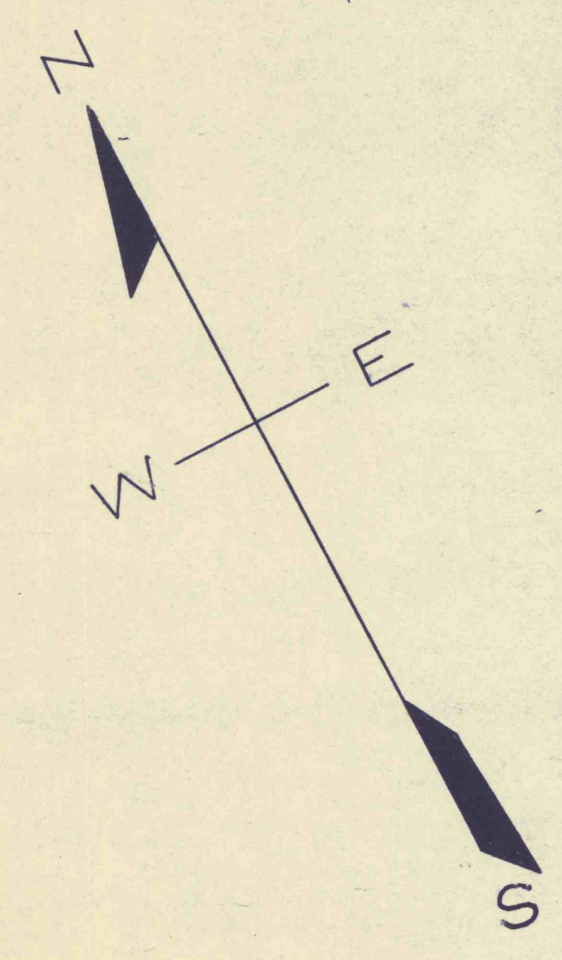


LAUFFER HRS & BLAIR & McCONNELL

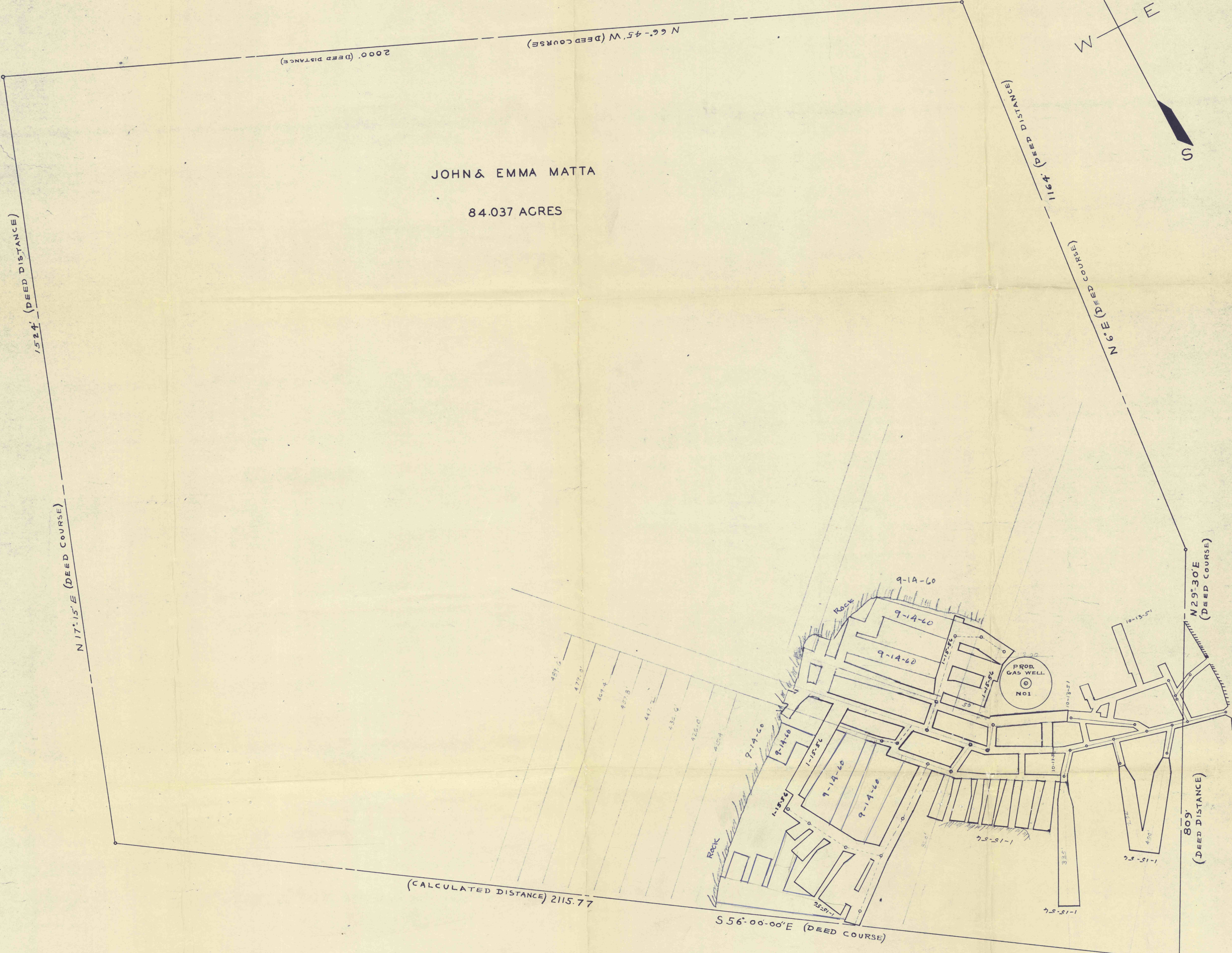


JOHN & EMMA MATTA

84.037 ACRES

WILLIAM SHAW

H N SAUL



MILTON LARIMER

MAP OF THE  
**MATTA MINE**

SITUATED IN WASHINGTON TWP. WESTMORELAND COUNTY PENN.

SCALE 1" = 100'  
POSTED 9-14-60

*Herbert J. De Simone* R.S. 483E

#1763  
12-15-99  
C.F.

"E" SEAM