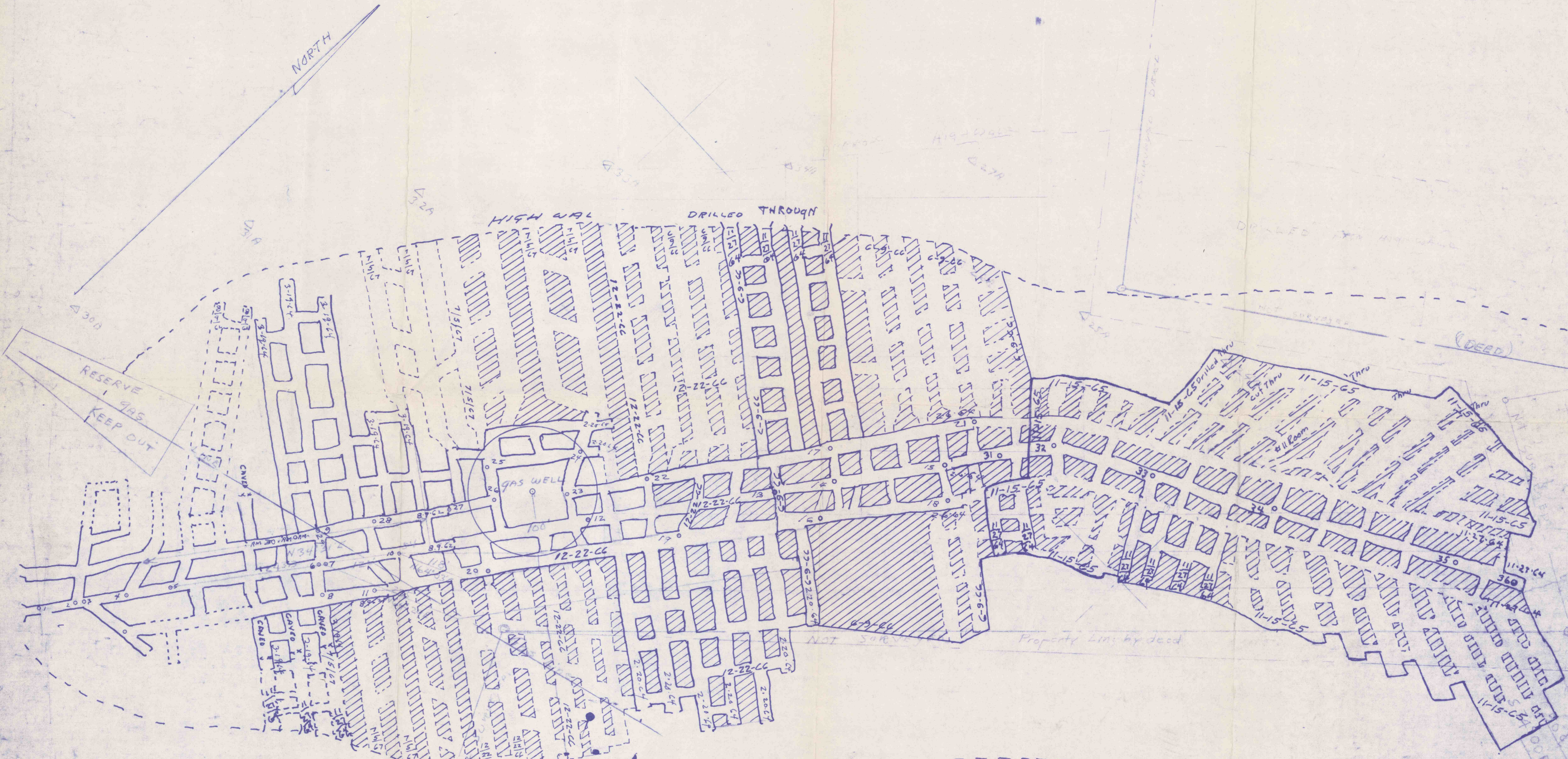


NORTH



PARTNER COAL CO.
 GIRTY MINE
 SITUATE IN
 SOUTH BEND TWP., ARMSTRONG CO. PA.
 SCALE 1" = 100' MAY 17 1962
 GRAFF ENGINEERING COMPANY
 BLAIRSVILLE, PA.

Workings shown by broken lines
 plotted from information
 furnished by Partner Coal Co.
 Officials

#1690
 12-13-99