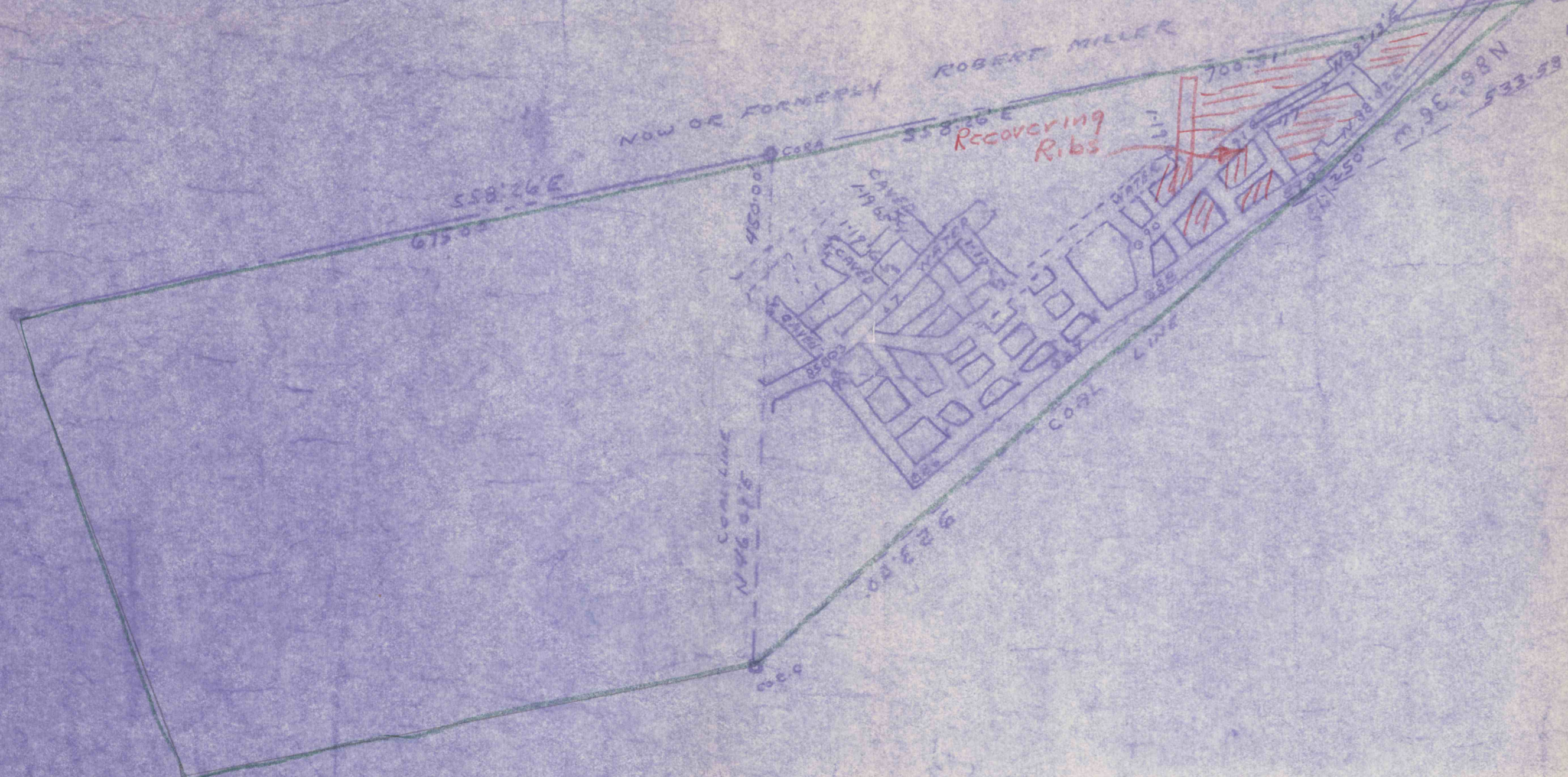
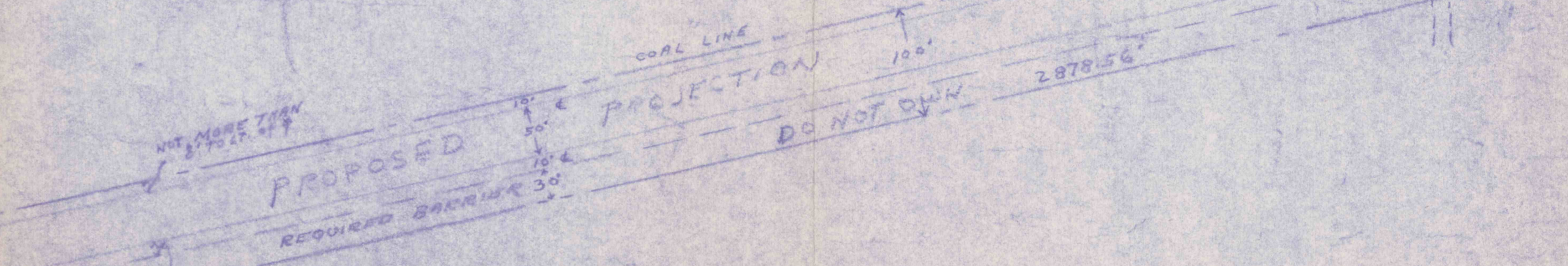


U.S. DEPT. OF THE INTERIOR  
BUREAU OF LAND MANAGEMENT



N 10° 00' E  
E 1100'



NOT MORE THAN 5' TO RT. OF  
R.B.R. COAL CO

N 9° 00' E  
E 1100'

MCORACKEN COAL CO  
SITUATE IN  
YOUNG TWP. INDIANA CO., PENNA.  
SCALE 1"=100' MARCH 8, 1963  
GRAFF ENGINEERING COMPANY  
BLAIRSVILLE, PA.

No. 2 Mine  
Mine Property  
Workings - Next 6 months