

LIST OF IMPROVEMENTS & EQUIPMENTS OF GEORGES COAL COMPANY.  
Sept. 25, 1920.

18 - One-story Houses.	\$ 8,000.00
8 - One story Houses.	2,000.00
70 - Mine Wagons.	5,000.00
22 2 Horses.	3,800.00
2 - Mine Triples.	800.00
Balls in Mine.	5,000.00
1 - Engine & Fan.	700.00
1 - Engine & Pump.	150.00
2000' 85' Balls.	800.00
	<u>\$ 26,750.00</u>

Coal Lands assessed at \$100.00 per acre.

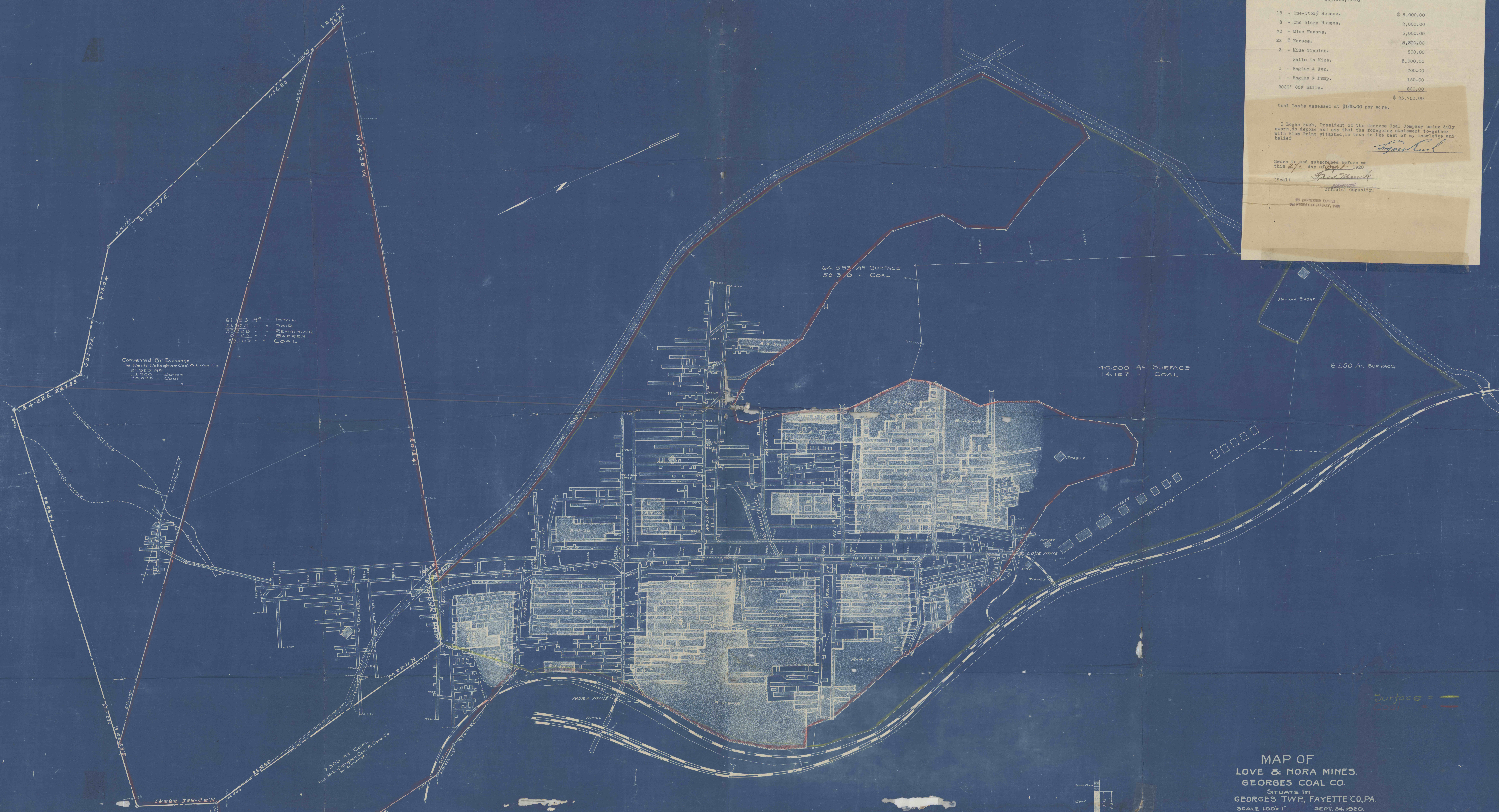
I, Logan Bush, President of the Georges Coal Company being duly sworn, do depose and say that the foregoing statement is true to the best of my knowledge and belief.

*Logan Bush*  
President

Sworn to and subscribed before me this 24th day of Sept. 1920.

(Seal) *Geo. W. Munk*  
Official Capacity.

BY COMMISSIONER EXPLOR.  
24th DAY OF SEPTEMBER, 1920.



61,133 A<sup>c</sup> - TOTAL  
21,825 - SOLD  
39,308 - REMAINING  
3,128 - BANKRUPT  
39,180 - COAL

Conveyed By Exchange  
To Kelly, Callaghan Coal & Coke Co.  
21,825 A<sup>c</sup> - Barren  
20,220 - Coal

7,306 A<sup>c</sup> COAL  
From Kelly, Callaghan Coal & Coke Co.  
by Exchange

TRACT	SURFACE	COAL
NO. 1	2,344	7,306
NO. 2	7,306	2,344
NO. 3	54,593	50,370
NO. 4	40,000	14,107
NO. 5	6,250	0
TOTAL	110,293	74,023

MAP OF  
LOVE & NORA MINES.  
GEORGES COAL CO.  
SITUATE IN  
GEORGES TWP., FAYETTE CO., PA.  
SCALE 100' = 1" SEPT. 24, 1920.  
SEWICKLEY OR 5 FOOT VEIN  
AV. HT. 4.8 FT.  
POSTED TO DATE 8-4-20 BY  
H. R. BLACKFORD,  
UNIONTOWN, PA. ASSURED DETER PLANE = 1000

Surface = —  
Coal = —