

RONALD STEUNDT

R.M. PATTON

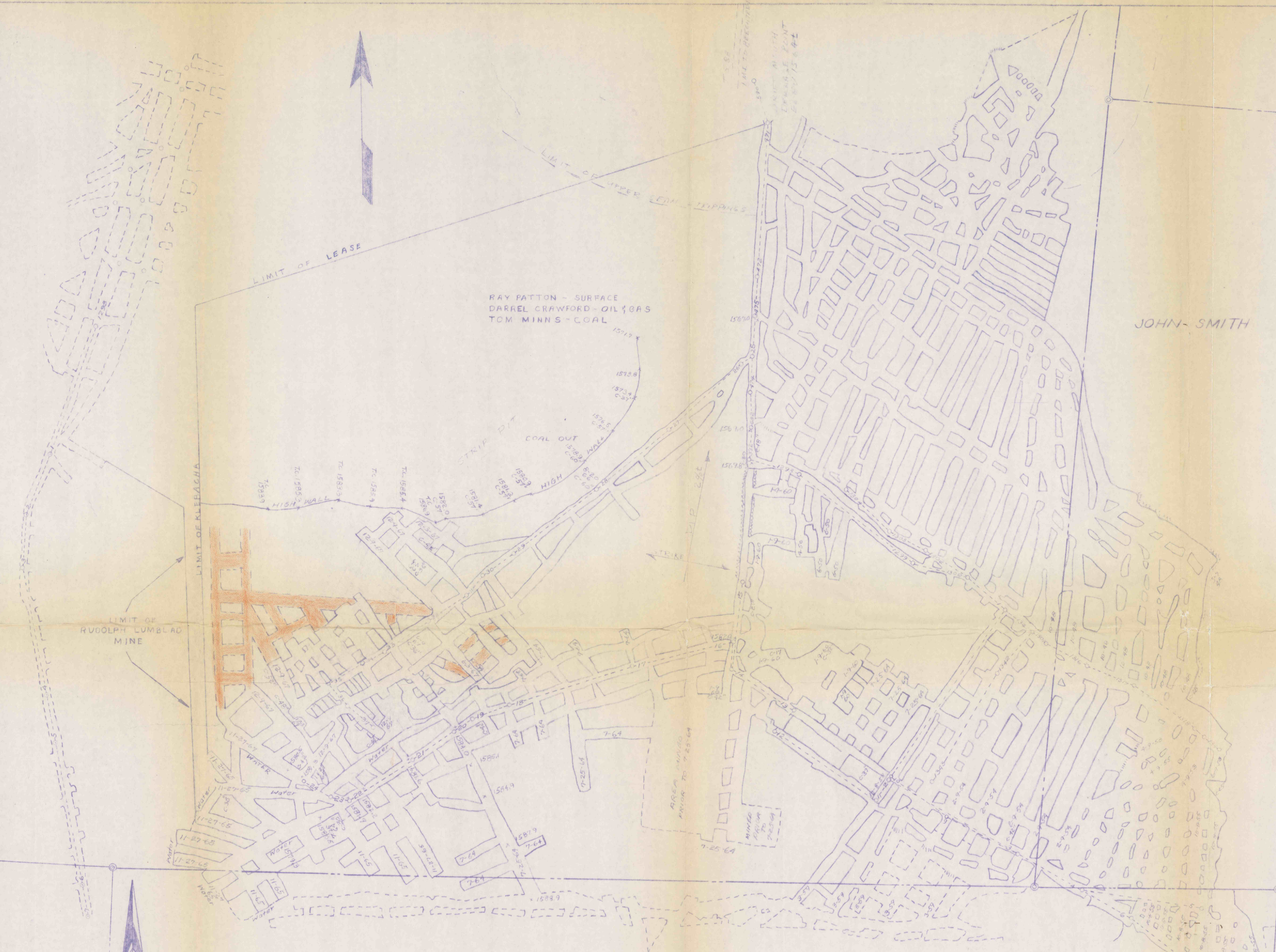
MARY SMITH

R.M. PATTON

H. KLEBACHA

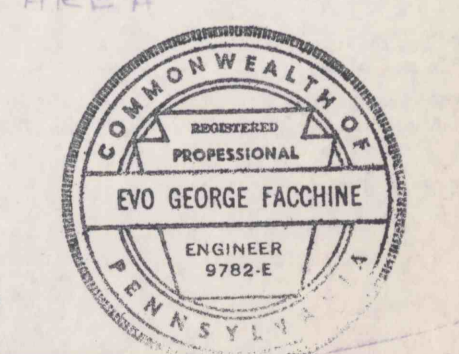
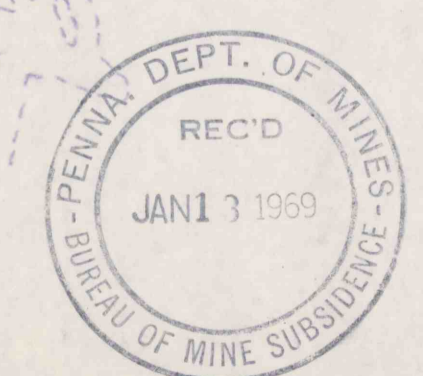
JOHN SMITH

RAY PATTON - SURFACE
DARREL CRAWFORD - OIL & GAS
TOM MINNS - COAL



- SUBSIDENCE PERMIT DATA
- CONTEMPLATED MINING 12-1-68 TO 6-1-69
 - PROTECTED STRUCTURES
 - MINING COMPLETED AREA

NOTES:
NO GAS, OIL OR WATER WELLS
IN AFFECTED AREA.
UPPER COAL SEAM STRIPPED OVER
ENTIRE MINE AREA



FIELD COPY

DAUGHERTY BROS.

DATE - 15 JAN 69
SCALE - 1" = 100'
DR BY - DWY
CK BY - EGF
REV -
REV -
REV -
BOOK NO. -
OR NO. - 1
FILE NO. - 117

MINE MAP
JOSEPH KLEBACHA MINE
WASH. TWP. JEFF. CO. PA.
LOWER FREEPORT SEAM
TRICO ENGINEERS INC.
DuBOIS PENNA.

#1498
8-13-99
CC