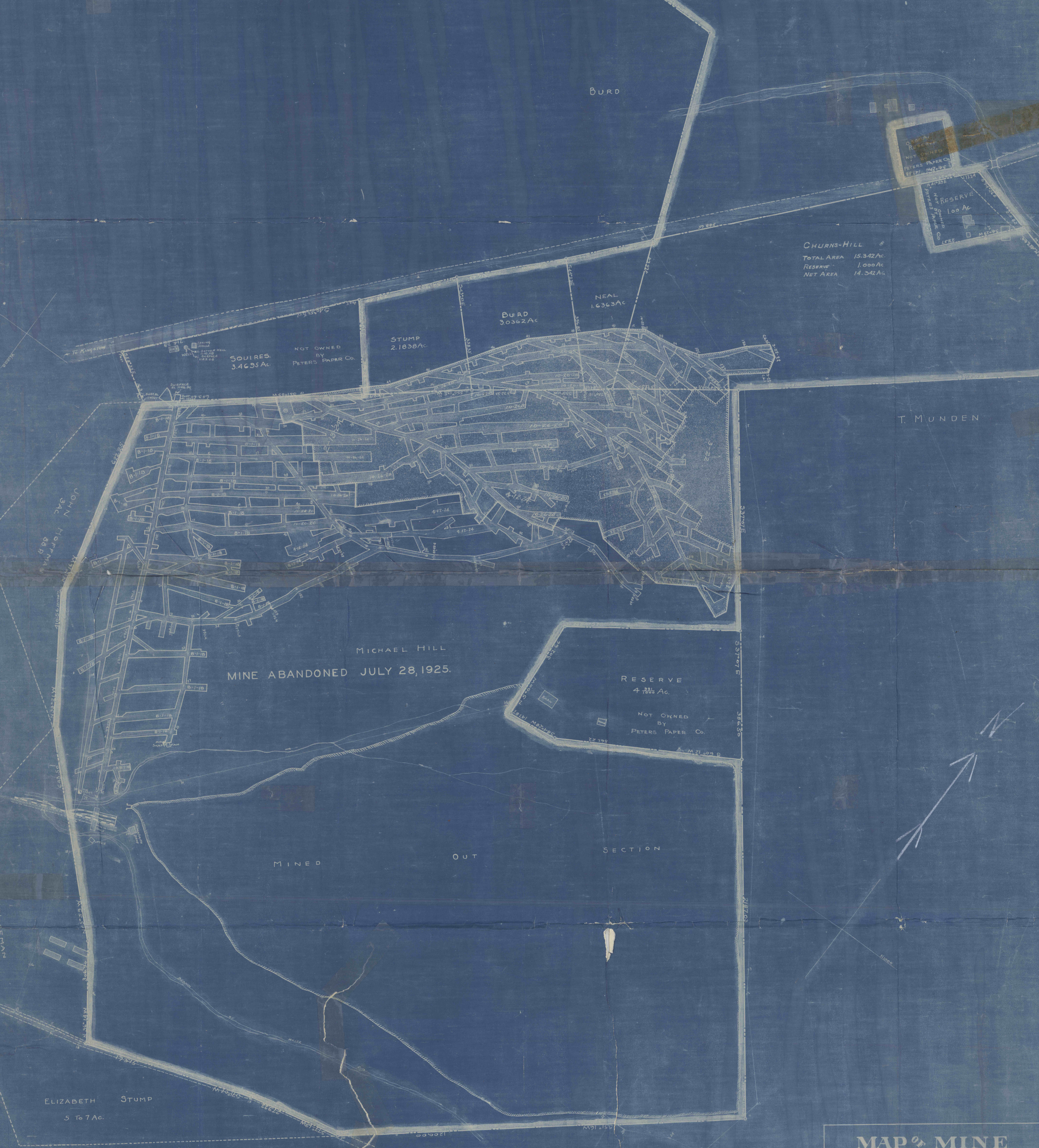


CHURNS.  
 TOTAL AREA 122,842 Ac.  
 RESERVES 2,500 Ac.  
 NET AREA 120,342 Ac.

CHURNS-HILL  
 TOTAL AREA 15,342 Ac.  
 RESERVE 1,000 Ac.  
 NET AREA 14,342 Ac.



On this 11th day of August A.D. 1925 personally  
 W. S. Thomas, who being duly sworn according  
 to the laws of the State of Pennsylvania, do hereby  
 certify that this map is a true and correct survey of the  
 mine workings of the said Company to the best of  
 his knowledge and belief.  
 Witness my hand and seal this 11th day of August 1925.  
 W. S. Thomas, Engineer  
 Justice of the Peace

**MAP OF MINE**  
**PETERS PAPER CO.**  
 KINGSTON-WESTMORELAND CO.-PA.  
 SCALE 100 FT.=1 IN. POSTED  
 GIBSON-THOMAS ENGR. CO.  
 LAURENS, PA.