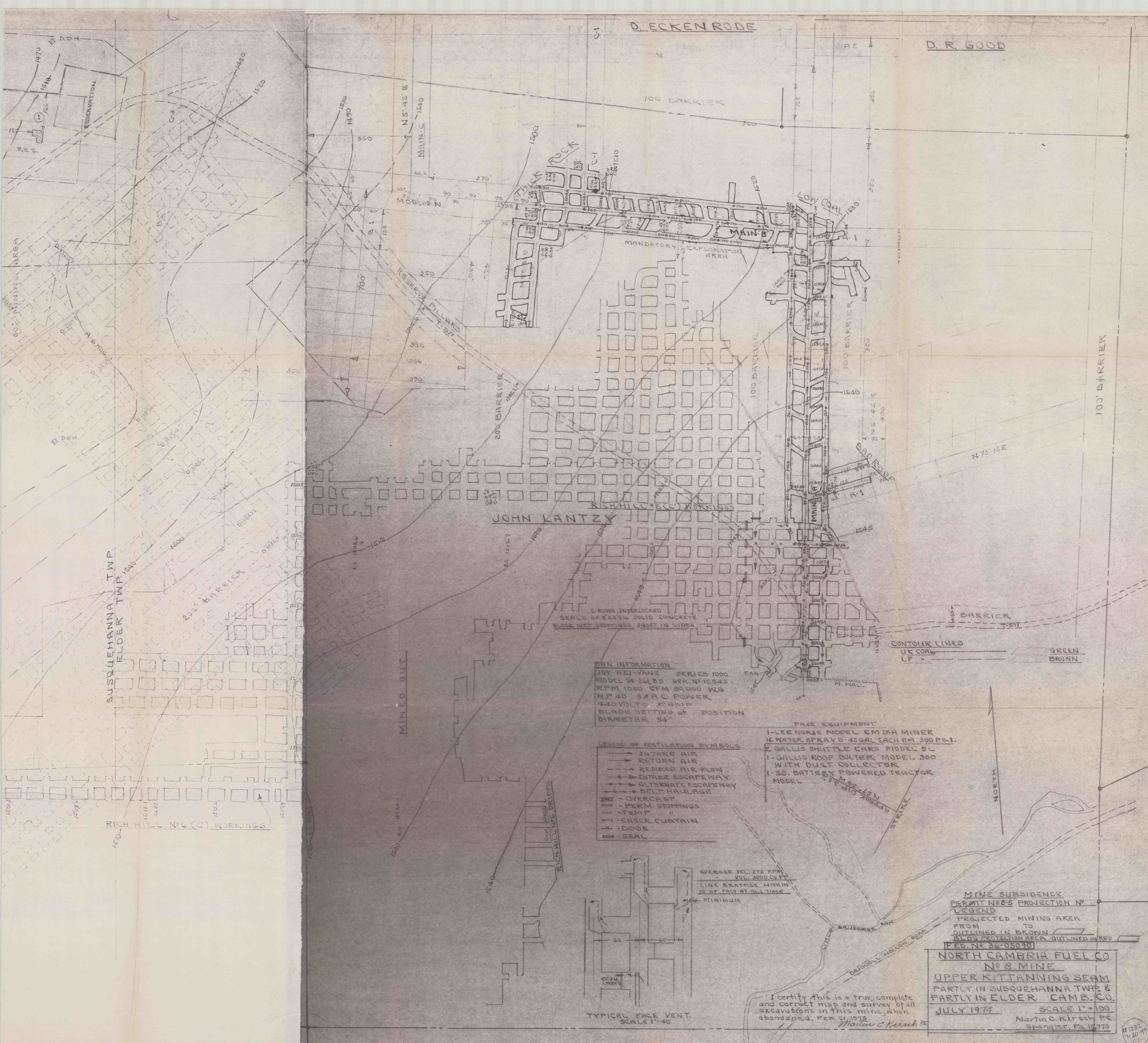


D. ECKENRODE

D. R. GOOD



MINING AREA

RESERVATION

100' BARRIER

N 5° 45' E
1540

MAIN S
1540

THICK ROCK

LOW COAL

MANDATORY EXPLORATION AREA

JOHN LANTZY

RICH HILL No. 6 (C) WORKINGS

N 75° 15' E

100' BARRIER

SUSQUEHANNA TWP
ELDER TWP

200' BARRIER

SEALS OF 6"x16" SOLID CONCRETE
BLOCK WET STOPPINGS, INSET IN SIDES

CONTOUR LINES
UK COAL LF "

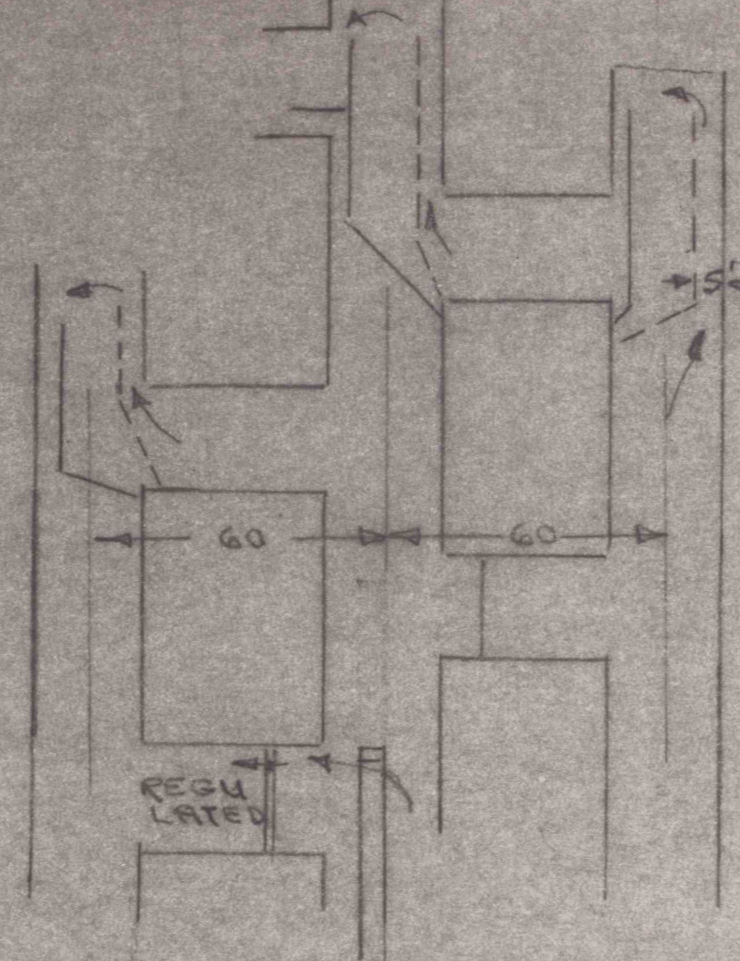
GREEN
BROWN

FAN INFORMATION
 JAY AXI-VANE SERIES 1000
 MODEL 54-24, 50 SER. # 12543
 RPM 1080 CFM 59,000 W.G.
 H.P. 40 3/4 AC POWER
 440 VOLTS 32 AMP
 BLADE SETTING AT POSITION
 DIAMETER 54"

FACE EQUIPMENT
 1-LEE NORSE MODEL CM 28H MINER
 15 WATER SPRAYS - 42 GAL EACH RM 300 P.S.I.
 2 GALLIS SHUTTLE CARS MODEL 5L
 1-GALLIS ROOF BOLTER MODEL 300
 WITH DUST COLLECTOR
 1-SS. BATTERY POWERED TRACTOR
 MODEL

LEGEND OF VENTILATION SYMBOLS
 → INTAKE AIR
 ← RETURN AIR
 → REDUCED AIR FLOW
 → INTAKE ESCAPEWAY
 → ALTERNATE ESCAPEWAY
 → BELT HAULAGE
 [X] OVERCAST
 [] PERM. STOPPINGS
 [] TEMP. "
 [] CHECK CURTAIN
 [] DOOR
 [] SEAL

AVERAGE VEL. 275 FPM
 VOL. 3000 CU FT
 LINE BRATTLE WITHIN
 10' OF FACE AT ALL TIME
 MINIMUM



TYPICAL FACE VENT.
SCALE 1" = 40'

MINE SUBSIDENCE
 PERMIT No. 5 PROJECTION No.
 LEGEND
 PROJECTED MINING AREA
 FROM TO
 OUTLINED IN BROWN
 BLD'G PROTECTION AREA, OUTLINED IN RED
 (FED. No. 36-05090)

NORTH CAMBRIA FUEL CO
No. 8 MINE
UPPER KITTANNING SEAM
 PARTLY IN SUSQUEHANNA TWP. &
 PARTLY IN ELDER, CAMB. CO.
 JULY 1974
 SCALE 1" = 100'
 Martin C. Kirsch, P.E.
 Spangler, Pa. 15713

I certify this is a true, complete
 and correct map and survey of all
 excavations in this mine, when
 abandoned, FEB. 21, 1972
 Martin C. Kirsch, P.E.

#1237
7-30-77
CC