



RESIDUE - E. A. IRVIN EST.

JOHN QUINN

1180'

N 39° 48' W

N 51° 21' E

803.3'

N 3° 45' E

959'

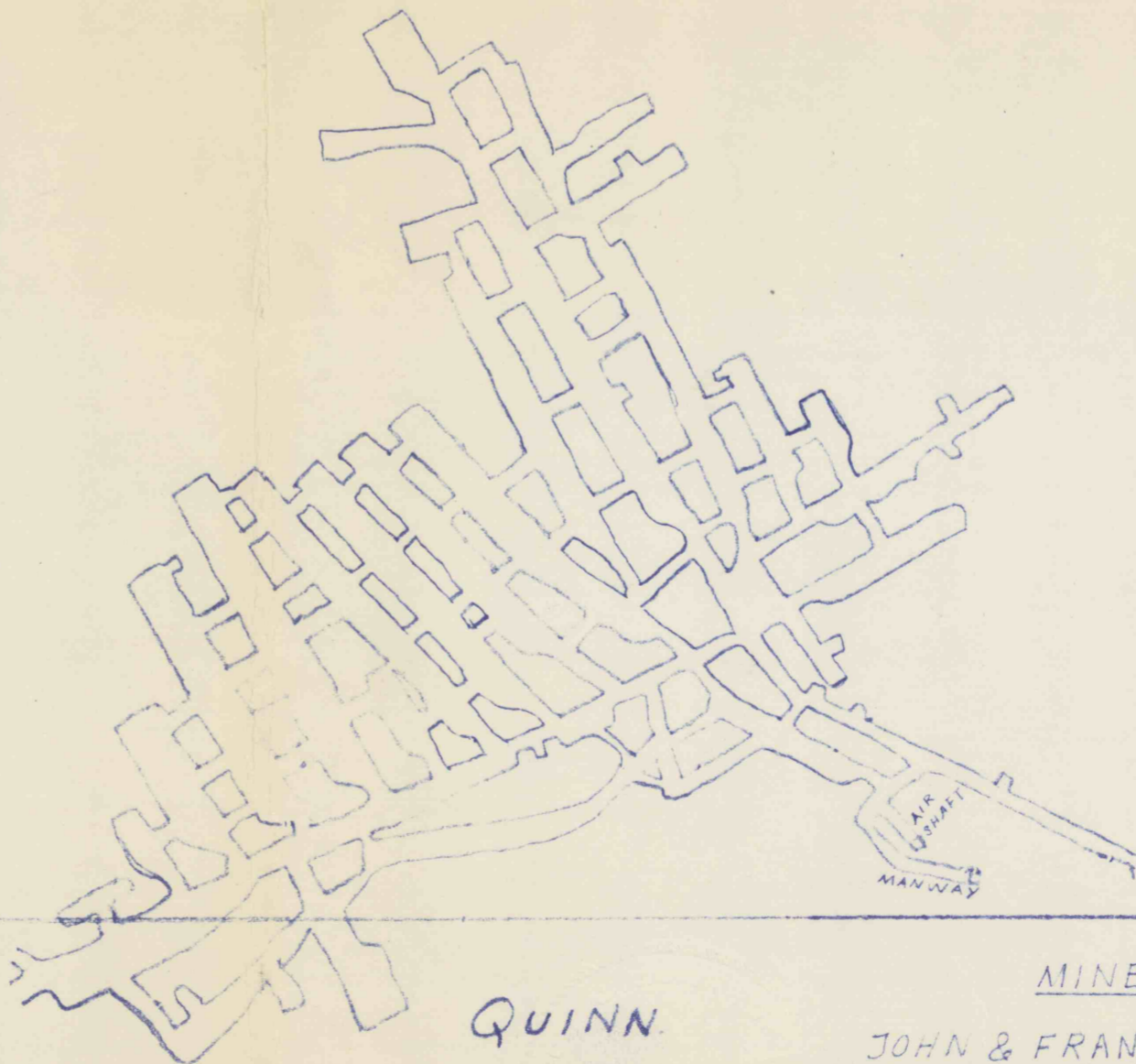
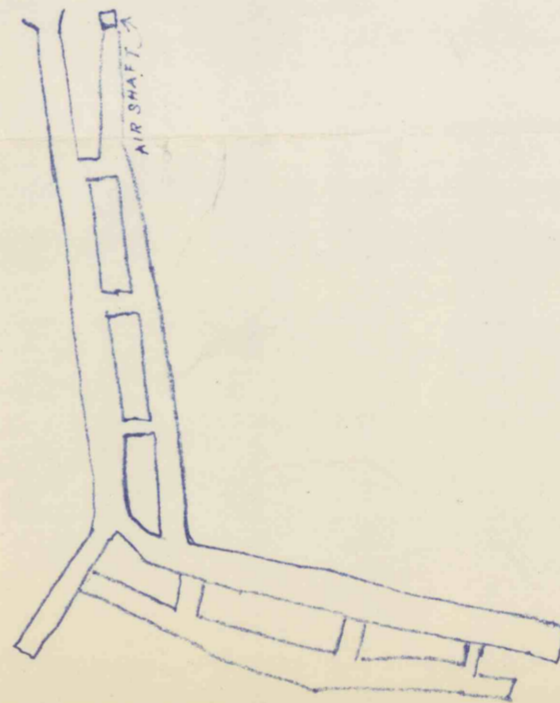
N 52° 14' E 270.5'

1939'

S 36° 32' E

JORDAN TOWNSHIP

KNOX TOWNSHIP



1626' 553.15W

JOHN QUINN

MINE WORKINGS

OF JOHN & FRANCIS HAMILTON JORDAN TOWNSHIP CLEARFIELD COUNTY PENNSYLVANIA

SCALE 1"=100' 27 By Guy A. Heir 27-1961

#1190  
7-28-99  
CC.