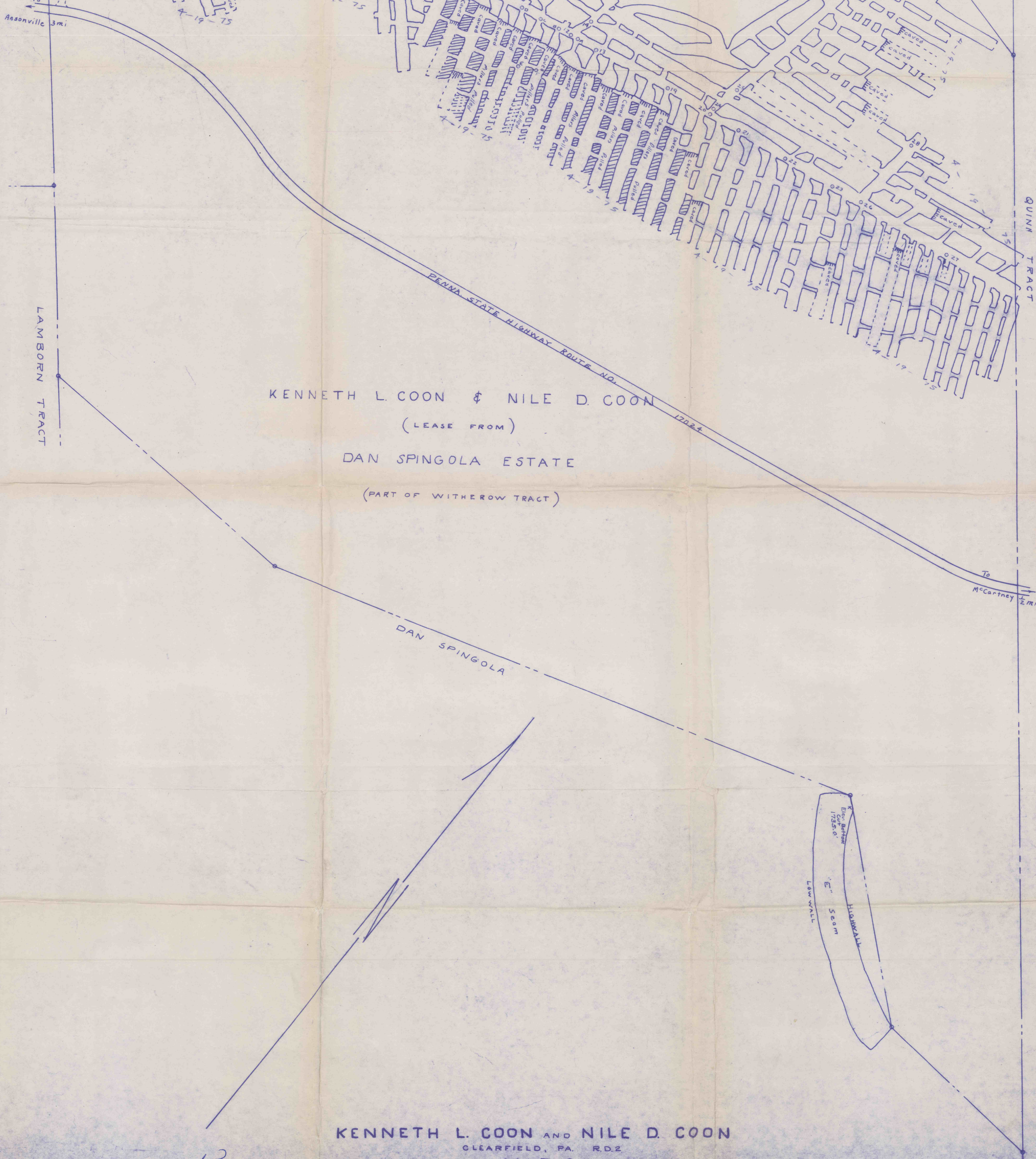




DAN SPINGOLA

KENNETH L. COON & NILE D. COON
 (LEASE FROM)
 DAN SPINGOLA ESTATE
 (PART OF WITHEROW TRACT)



Kenneth L. Coon & Foreman
Nile D. Coon

KENNETH L. COON AND NILE D. COON
 CLEARFIELD, PA. RD.2
MAP OF
MINE & COAL LAND
JORDAN TWP. CLFD. CO., PA.
 SCALE 1"=100'
 CLEARFIELD, PA. DEC. 17, 1966
 LEX. W. CURRY
 REG. SURVEYOR

"E" SEAM
 MINE CLOSURE APRIL 19, 1975
 FINAL MAP

#645
 6-30-99
 C.C.