

BRIDGEPORT MINE

23-1951

UNITED STATES STEEL CORP.

FAYETTE COUNTY PA. LUZERNE TWP

SCALE 1 INCH = 100 FT

DATUM OF LEVELS

U. S. GEOLOGICAL SURVEY

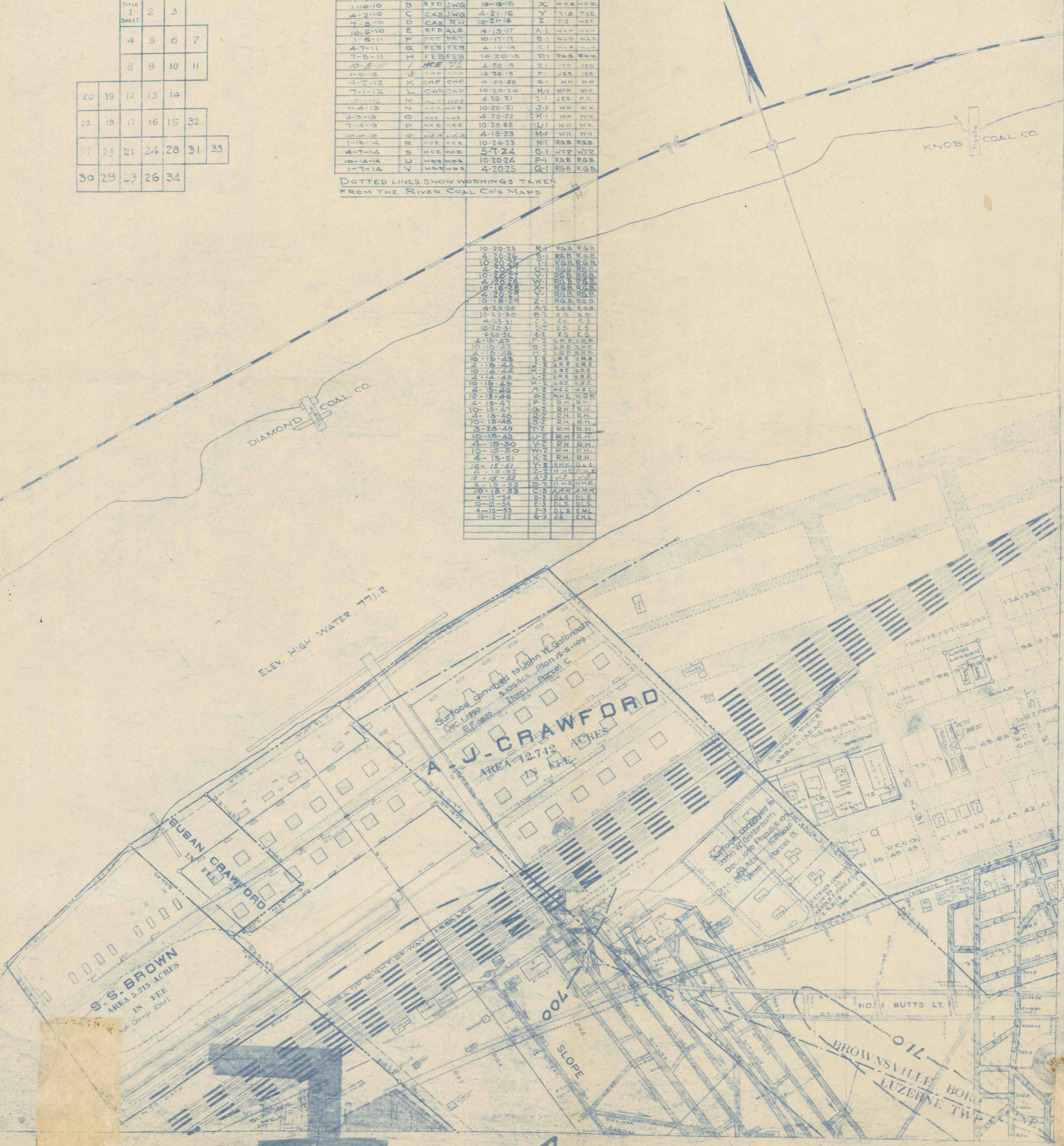
DATE OF LAST SURVEY

DATE	Survey Letter	Plotted By	Traced By	DATE	Survey Letter	Plotted By	Traced By
10-19-05	A	REF	CAS	4-16-15	W	HCE	HCE
1-10-10	B	REF	JWG	10-18-15	X	HCE	HCE
4-2-10	C	CAS	JWG	4-21-16	Y	TIS	TIS
7-8-10	D	CAS	RH	10-21-16	Z	TIS	HCE
10-8-10	E	REF	ALB	4-13-17	A-1	HLO	HLO
1-6-11	F	REF	PCT	10-11-17	B-1	WLO	WLO
4-7-11	G	FEB	FEB	4-12-18	C-1	WLO	WLO
7-5-11	H	FEB	FEB	10-20-18	D-1	RGB	RGB
10-5-11	I	HCE	HCE	4-20-19	E-1	JES	JES
1-6-12	J	CWP	CWP	10-20-19	F-1	JES	JES
4-2-12	K	CWP	CWP	4-20-20	G-1	WH	WH
7-1-12	L	CWP	CWP	10-20-20	H-1	WFR	WFR
10-1-12	M	HCE	HCE	4-20-21	I-1	JES	PK
1-4-13	N	HCE	HCE	10-20-21	J-1	WH	WH
4-3-13	O	HCE	HCE	4-20-22	K-1	WH	WH
7-14-13	P	HCE	HCE	10-20-22	L-1	WH	WH
10-15-13	Q	HCE	HCE	4-18-23	M-1	WH	WH
1-13-14	R	HCE	HCE	10-24-23	N-1	RGB	RGB
4-7-14	S	HCE	HCE	5-7-24	O-1	HCE	HCE
10-14-14	U	HCE	HCE	10-20-24	P-1	RGB	RGB
1-7-14	V	HCE	HCE	4-20-25	Q-1	RGB	RGB

DOTTED LINES SHOW WORKINGS TAKEN FROM THE RIVER COAL CO'S MAPS

TITLE SHEET	1	2	3
	4	5	6
	7	8	9
	10	11	12
20	19	18	17
22	21	20	19
24	23	22	21
26	25	24	23
28	27	26	25
30	29	28	27
32	31	30	29
34	33	32	31

10-20-25	R-1	RGB	RGB
4-20-26	S-1	RGB	RGB
10-20-26	T-1	RGB	RGB
4-20-27	U-1	RGB	RGB
10-20-27	V-1	RGB	RGB
4-20-28	W-1	RGB	RGB
10-20-28	X-1	RGB	RGB
4-18-29	Y-1	RGB	RGB
10-18-29	Z-1	RGB	RGB
4-20-30	A-2	RGB	RGB
10-20-30	B-2	RGB	RGB
4-20-31	C-2	RGB	RGB
10-20-31	D-2	RGB	RGB
4-20-32	E-2	RGB	RGB
10-15-42	F-2	RGB	RGB
4-15-42	G-2	RGB	RGB
10-15-42	H-2	RGB	RGB
4-15-43	I-2	RGB	RGB
10-15-43	J-2	RGB	RGB
4-15-44	K-2	RGB	RGB
10-15-44	L-2	RGB	RGB
4-15-45	M-2	RGB	RGB
10-15-45	N-2	RGB	RGB
4-15-46	O-2	RGB	RGB
10-15-46	P-2	RGB	RGB
4-15-47	Q-2	RGB	RGB
10-15-47	R-2	RGB	RGB
4-15-48	S-2	RGB	RGB
10-15-48	T-2	RGB	RGB
4-15-49	U-2	RGB	RGB
10-15-49	V-2	RGB	RGB
4-15-50	W-2	RGB	RGB
10-15-50	X-2	RGB	RGB
4-15-51	Y-2	RGB	RGB
10-15-51	Z-2	RGB	RGB
4-15-52	A-3	RGB	RGB
10-15-52	B-3	RGB	RGB
4-15-53	C-3	RGB	RGB
10-15-53	D-3	RGB	RGB
4-15-54	E-3	RGB	RGB
10-15-54	F-3	RGB	RGB
4-15-55	G-3	RGB	RGB
10-15-55	H-3	RGB	RGB



#368
6-16-99
CC

2

4