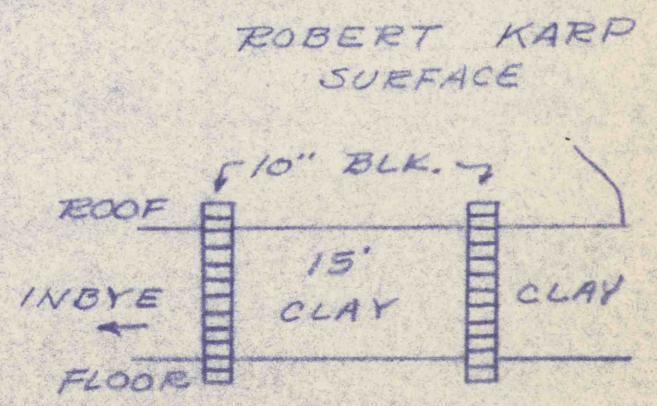
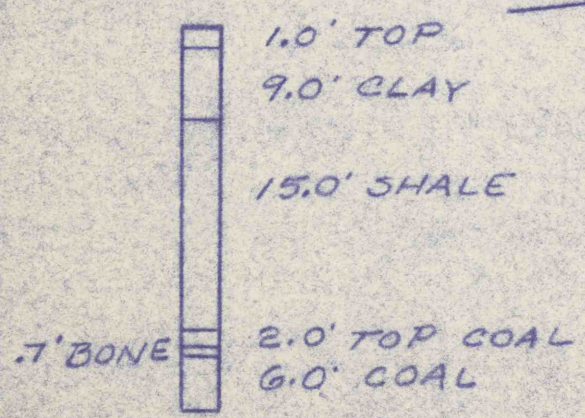
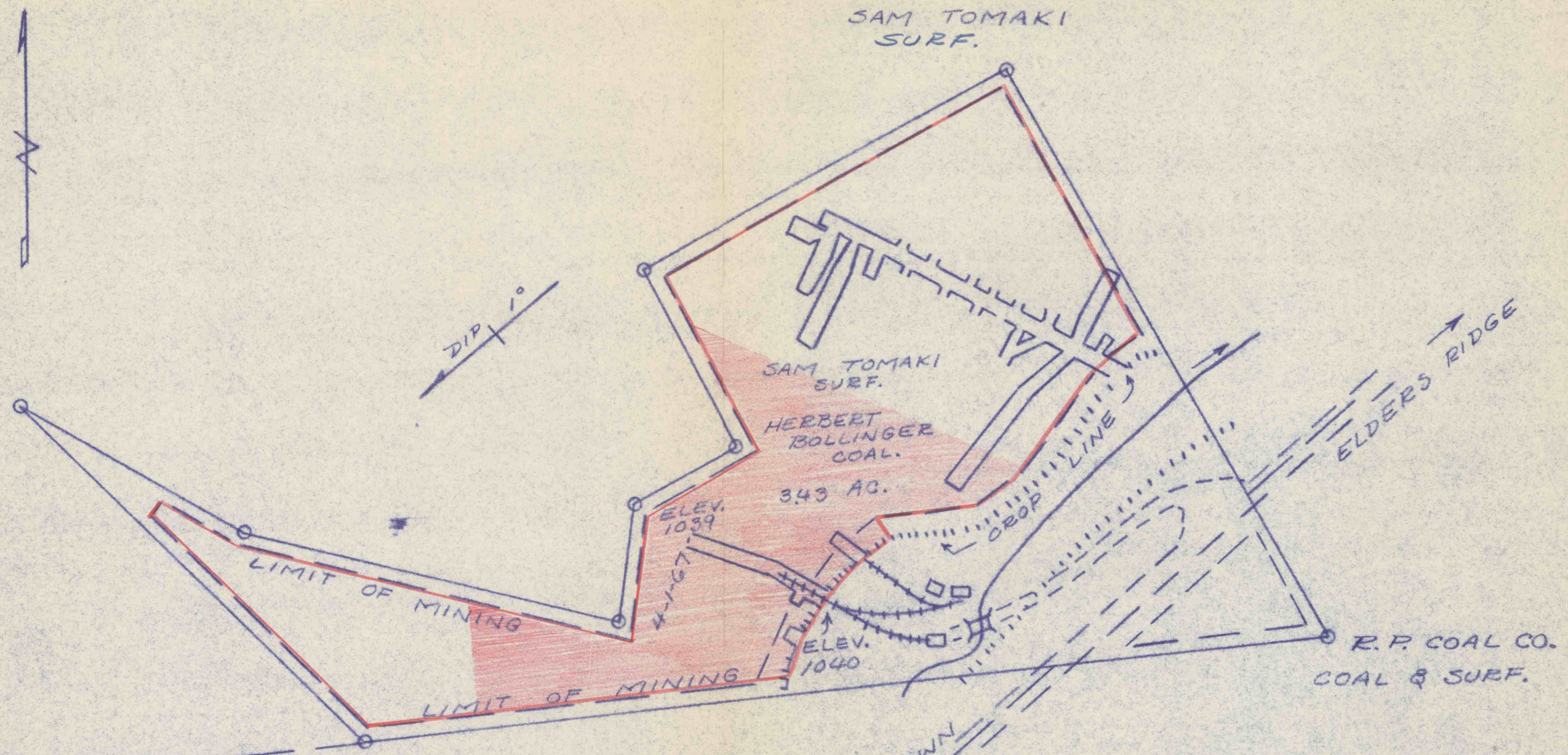


#326  
6-14-99  
C.C.

FIELD COPY



BOLLINGER NO. 1 MINE  
HERBERT F. BOLLINGER  
CONEMAUGH TWP., INDIANA CO., PA.  
SCALE: 1" = 100' AUG. 28, 1968  
BY: CHAS. KRAVETSKY R.S. 12782E  
AVONMORE, PA.  
FROM MAP BY: JOHN B. BRUNOT JR.  
GBH., PA. RE. 5179

— LEGEND —  
CONT. MINING 9-1-68 - 3-1-69 ■  
SUPPORT AREA  
PROT. STRUCTURES  
MINING COMPLETED  
PERMIT AREA

Charles S. Kravetsky