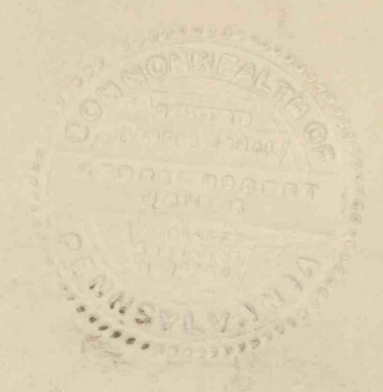


MAP OF  
 BURD COAL COMPANY  
 "DENNIS" MINE - "E" COAL SEAM  
 SITUATE - ARMSTRONG TWP., INDIANA COUNTY, PENNA.  
 SCALE - 1" = 100' SEE U.S.G.S. - "ELDERS RIDGE" QUADRANGLE  
 SURVEYED - 19 MAY 1955 - BY - GEORGE R. JONES, REG. PROF. ENGR. #14254  
 NEWCASTLE, PENNA.

NOTE: PRIOR SURVEY MADE BY Q.B. JONES, REG. SURV., 3 MARCH 1953  
 THE SURVEY OF THE PROPERTY LINES AND THE HIGH WALL WAS MADE  
 PRIOR TO MINE SURVEY BY ALEX. GERHAM. I CHECKED THE EAST PROPERTY  
 LINE FROM THE SOUTH END AND TIED MINE SURVEY TO THE SE CORNER OF  
 THE TRACT. IT IS MY OPINION THAT THE EAST PROPERTY LINE SHOULD BE KEPT ON  
 BEFORE THE PRESENT MINE WORKING ADVANCE OVER 600'.  
 Geo. R. Jones, R.P.E. #14254



#356  
 6-10-99  
 C.C.