

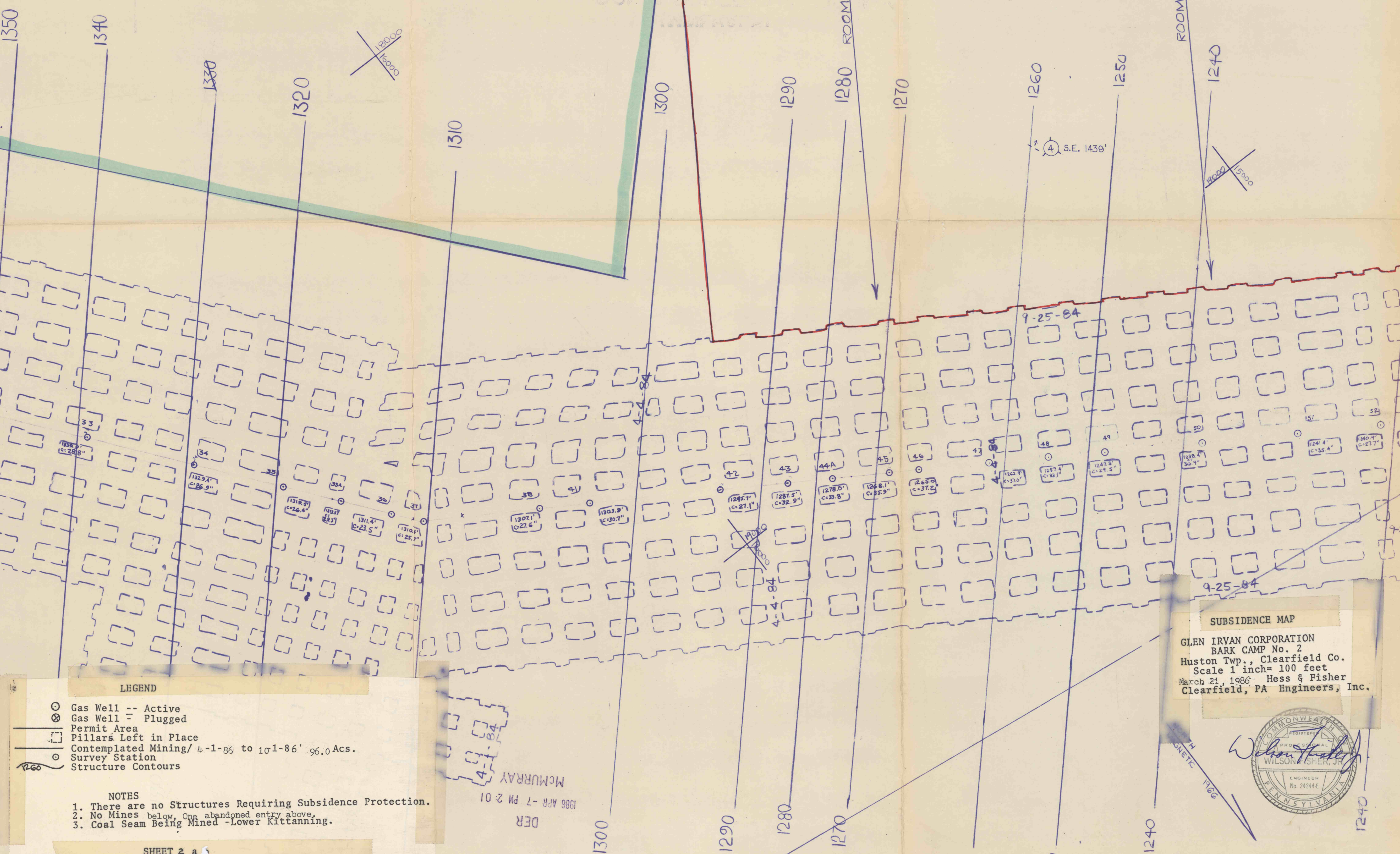
SOUTH BRANCH OF BENNETT BRANCH

THOMAS E. REITZ
(MINERALS)
DON & ROBERTINA EIGHMY
(SURFACE)

PENNA. STATE GAME LANDS
(SURFACE)
THOMAS E. REITZ
(MINERALS)
Warrant 3575

EXTENT OF PERMIT

⑤ S.E. 1360'



LEGEND

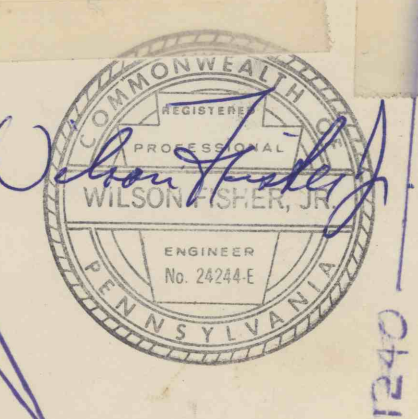
- Gas Well -- Active
- ⊗ Gas Well -- Plugged
- ▭ Permit Area
- ▭ Pillars Left in Place
- ▭ Contemplated Mining/ 4-1-86 to 10-1-86' 96.0 Acs.
- Survey Station
- Structure Contours

NOTES

1. There are no Structures Requiring Subsidence Protection.
2. No Mines below, One abandoned entry above.
3. Coal Seam Being Mined - Lower Kittanning.

SHEET 2 a

SUBSIDENCE MAP
 GLEN IRVAN CORPORATION
 BARK CAMP No. 2
 Huston Twp., Clearfield Co.
 Scale 1 inch = 100 feet
 March 21, 1986 Hess & Fisher
 Clearfield, PA Engineers, Inc.



MINE WORKS TO DATE 3-21-86 K.W.B.