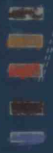
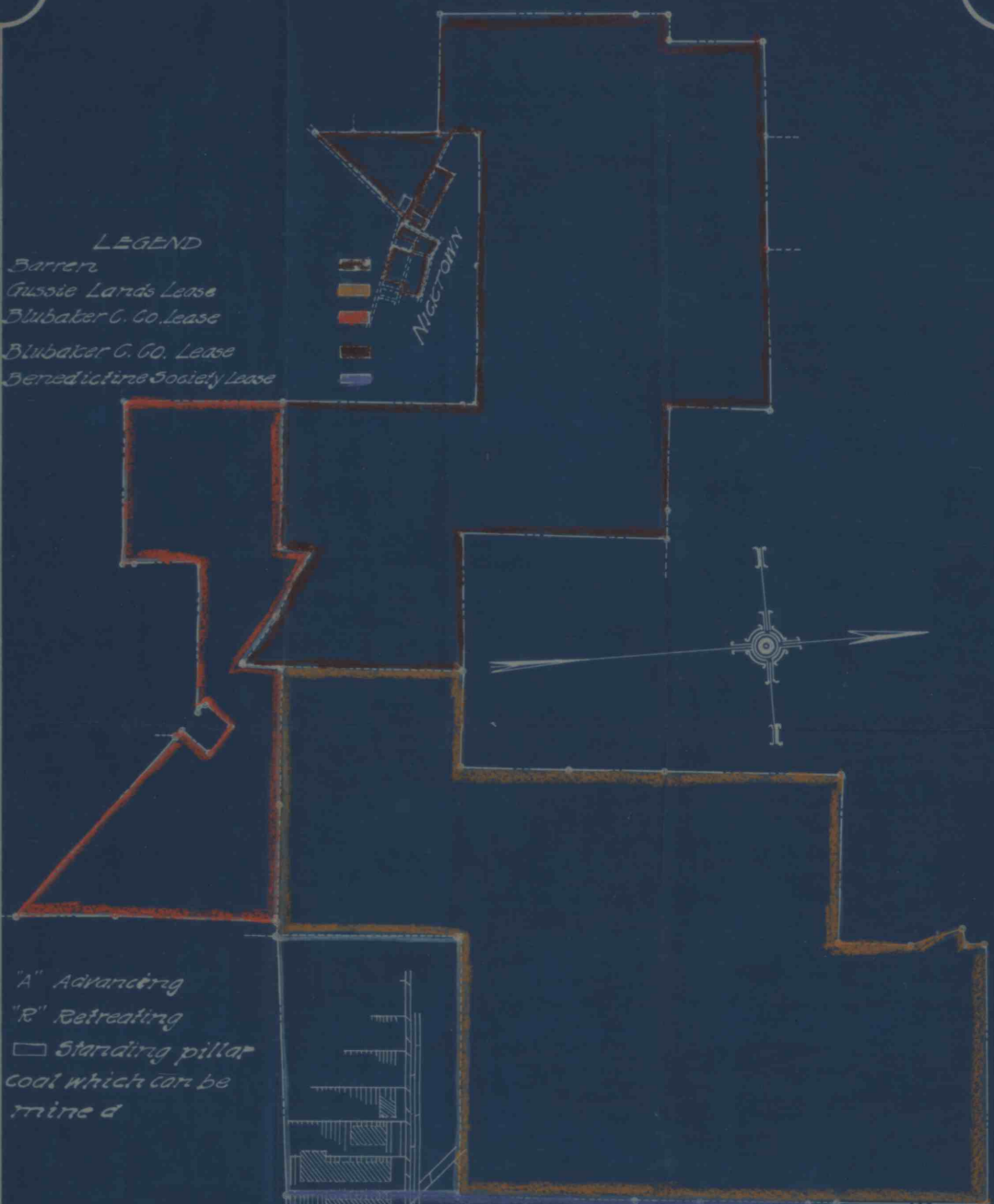


LEGEND

- Barrers
- Gussie Lands Lease
- Blubaker C. Co. Lease
- Blubaker C. Co. Lease
- Benedictine Society Lease



NIGHT TOWN



- "A" Advancing
- "R" Retreating
- Standing pillar
- cool which can be mined

KEY MAP OF  
WATKINS No. 3 MINE  
NEAR BALEBTON  
CAMBRIA CO. PA.  
May 1920.

SCALE IN FEET

Chas. E. Schlichter Engr.

