

Eyre Collieries Company
Near Clfd.
Lawrence Twp.
1917.

C. and.

CLEARFIELD QUAD

H. & D. M.E.s.

1 inch = 1000'

from 1917 map of Eagle
Bed Ele. Coal Sections.

(A) C? 1351	B. 0.7'
	C 1.5
	R 0.1
	C 1.7
B C? 1351	B 0.6'
	C 2.8'
C C? 1397	B 1.0
	C 3.0
D C? 1353	B 0.8
	C 1.0
	R 0.15
	C 1.6
E C? 1369	R 1.0
	C 0.5
	R 0.2
	C 1.2
F C? 1368	B 1.4
	C 2.7
G C? 1369	B 0.7
	C 1.5
	R 0.1
	C 1.3
H. 1339	R 0.06
	C 0.7
	R 0.1
	C 2.0

Nothing in Dred.
Eagle #2.
Under water 10/1/1920.
Sections by obscure.
C 2.1' seams
R 0.1'
C 0.9' typical

Original map based on 500'
Pa. RR. over crossing of N.Y.C.

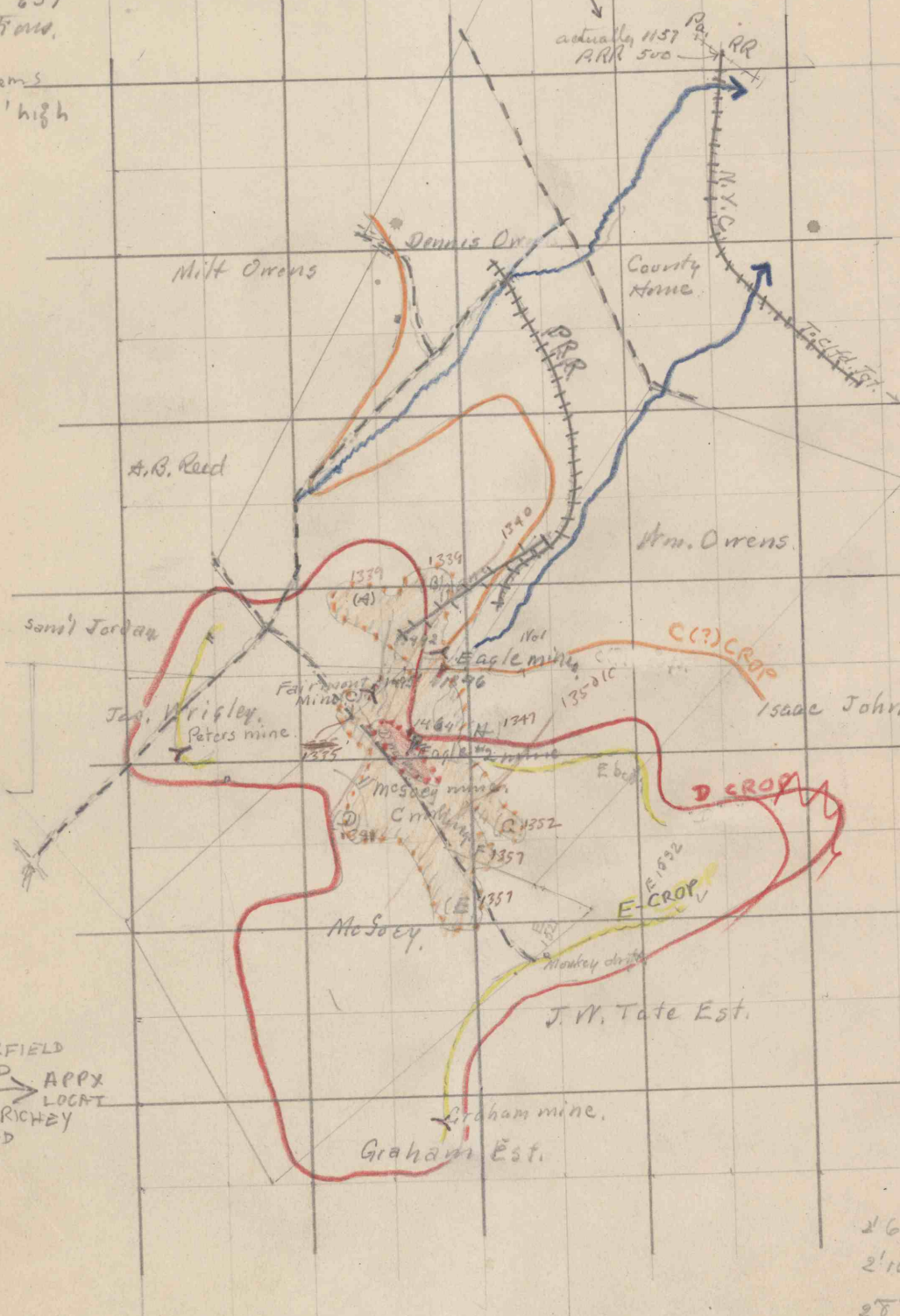
Fairmont 1495

This map. = 738
Added to 657
all elevations.

Ashley seems
to be 12' high

1959 Clearfield 7 1/2'
gives this as 1145

actually 1157
ARR 500



CLEARFIELD QUAD
APPX LOCAT
GLEN RICHEY QUAD

26"	E Fairmont	1495	} 31'
2'10"	D Eagle #2	1464	
28"	C Eagle #1	1346	
	B estimated	1900	

RR. Clfd June. 1162
" Route 322 1126 + 15 = 1149

1532
1453
39

1136 only 1150 at RR
1185 at road
1280 top of private road. } 176
say 1320 coal. B.
1366 position C.
12 + 115 = 127 1447 " C'
+ 87 1500 " D
1532 " E

E 1532
195
1337
1250
87

#954
7-15-99
CC