

JOHN MC KENDRICK TRACT  
 COAL - C.B.C. CORP. & R.C.CO.  
 SURF - C.B.C. CORP.

NO. 11 STRIP  
 SECTION-1  
 AFFECTED AREA = 9.33 ACRES  
 1,000 A. BONDED FOR DEEP MINE  
 8.33 ACRES GRADED APRIL, 1963  
 8.33 " PLANTED NOV. 5, 1963

AREA NOT STRIPPED BY  
 AGREEMENT WITH  
 CITIZENS WATER CO.  
 OF CLYMER

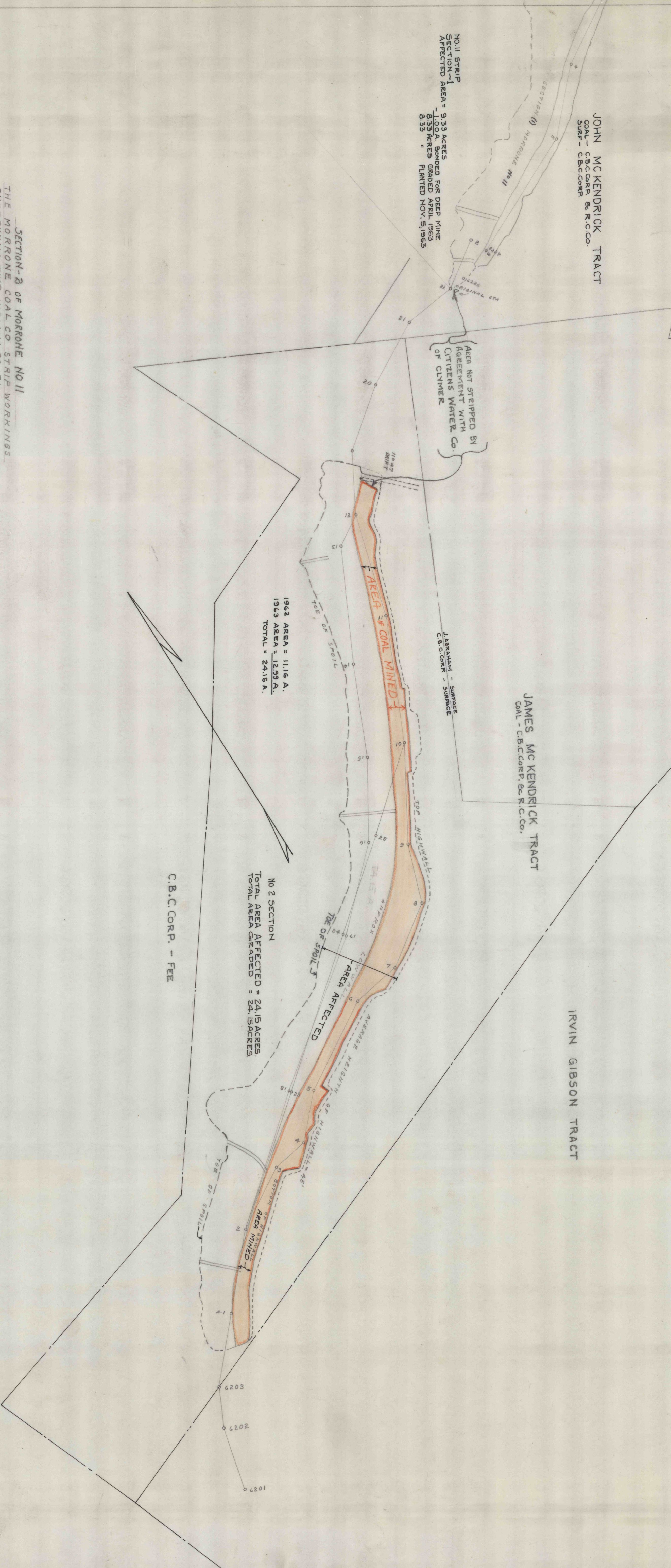
JAMES MC KENDRICK TRACT  
 COAL - C.B.C. CORP. & R.C.CO.

IRVIN GIBSON TRACT

C.B.C. CORP. - FEE

1962 AREA = 11.16 A.  
 1963 AREA = 12.99 A.  
 TOTAL = 24.15 A.

NO 2 SECTION  
 TOTAL AREA AFFECTED = 24.15 ACRES  
 TOTAL AREA GRADED = 24.15 ACRES



SECTION-2 OF MORRONE NO 11

THE MORRONE COAL CO STRIP WORKINGS  
 CHERYHILL TWP. INDIANA CO. PA  
 "B" SEAM SCALE 1" = 200'  
 SURVEYED NOVEMBER 13<sup>TH</sup> 1963 BY THOMAS HOWARTH

DIRECTED BY  
*Paul Hill*  
 ENGINEER