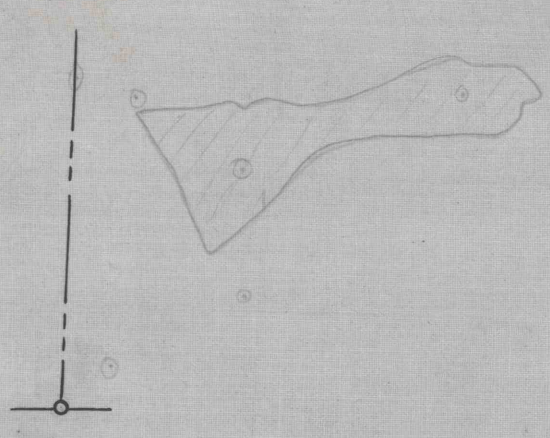


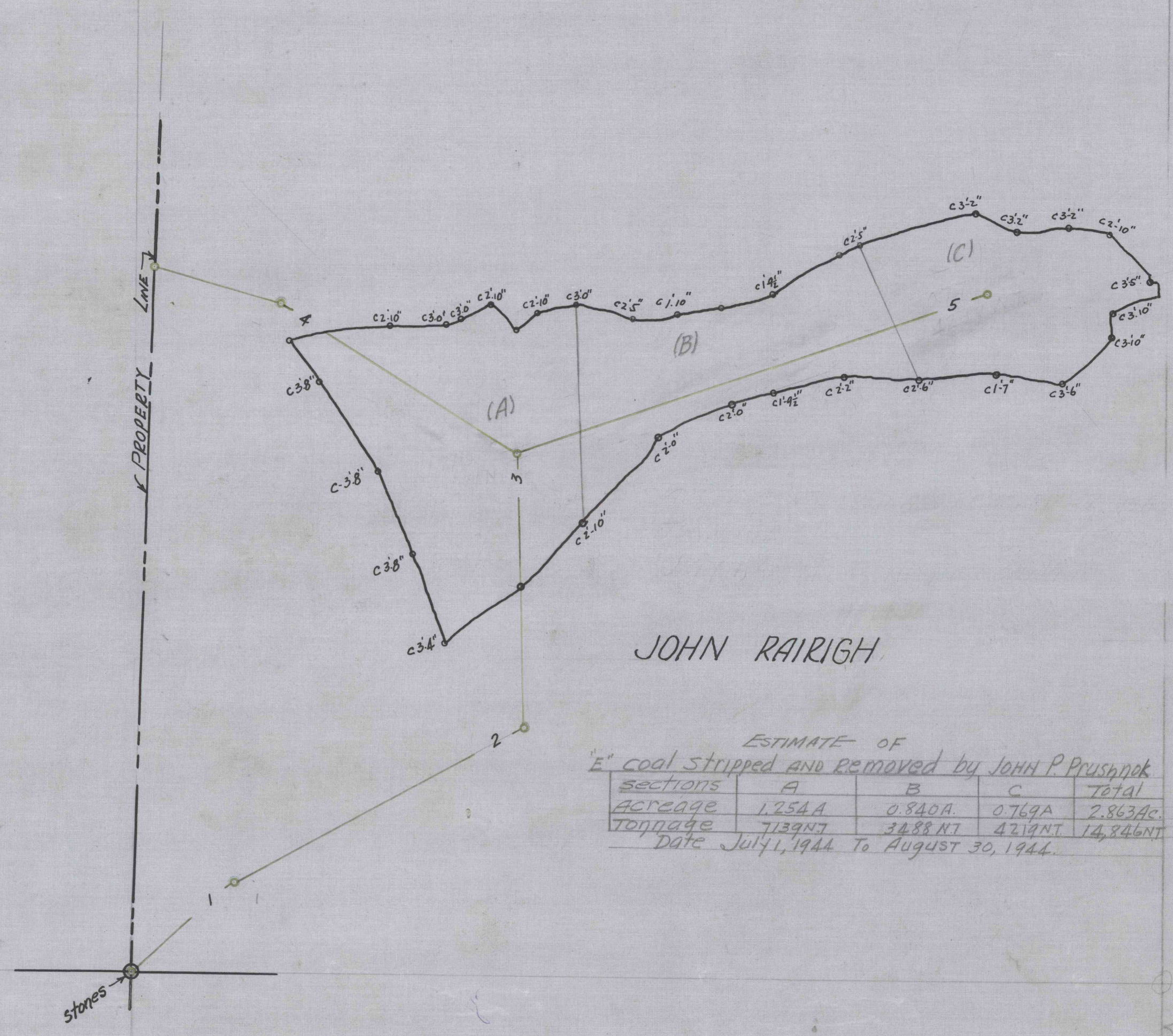
W 730



N 2000

N 1000

A. H. BRILHART



JOHN RAIRIGH

ESTIMATE OF
E' coal stripped and removed by JOHN P. PRUSHNOK

sections	A	B	C	TOTAL
ACREAGE	1.2544	0.8408	0.7698	2.8650
TONNAGE	713927	348827	421921	1484675
Date July 1, 1944 To August 30, 1944				

DISCLAIMER: This map is provided as a courtesy to the Pennsylvania Bureau of Deep Mine Safety by American Premier Underwriters, Inc. (fka The Penn Central Railroad Corporation) and its subsidiary United Railroad Corp, which own or owned, but do not operate, the coal assets depicted hereon.

American Premier Underwriters, Inc. and United Railroad Corp. disclaim any representation or duty to any person as to the accuracy or completeness of this map or its fitness for any particular mining, safety or real estate related purpose. Any independent duty to verify its accuracy and completeness, Premier Underwriters, Inc., United Railroad Corp. and their respective affiliates, shareholders, directors, officers and employees harmless from damage or liability arising from its use.

GEORGE or D.F. BARKET

PENNSYLVANIA COAL AND COKE CORPORATION
 STRIPPING DONE IN E' SEAM BY
 JOHN P. PRUSHNOK
 ON THE
 JOHN RAIRIGH 92.90 AC. TRACT
 GRANT TWP., INDIANA COUNTY, PENN'A.
 scale 1"=100' Sept. 6, 1944
 (CHESTNUT RIDGE COAL CO. LAND)
 (See Tracing C-24)

DRAWING No W-730

W 1000

ZERO

E 1000