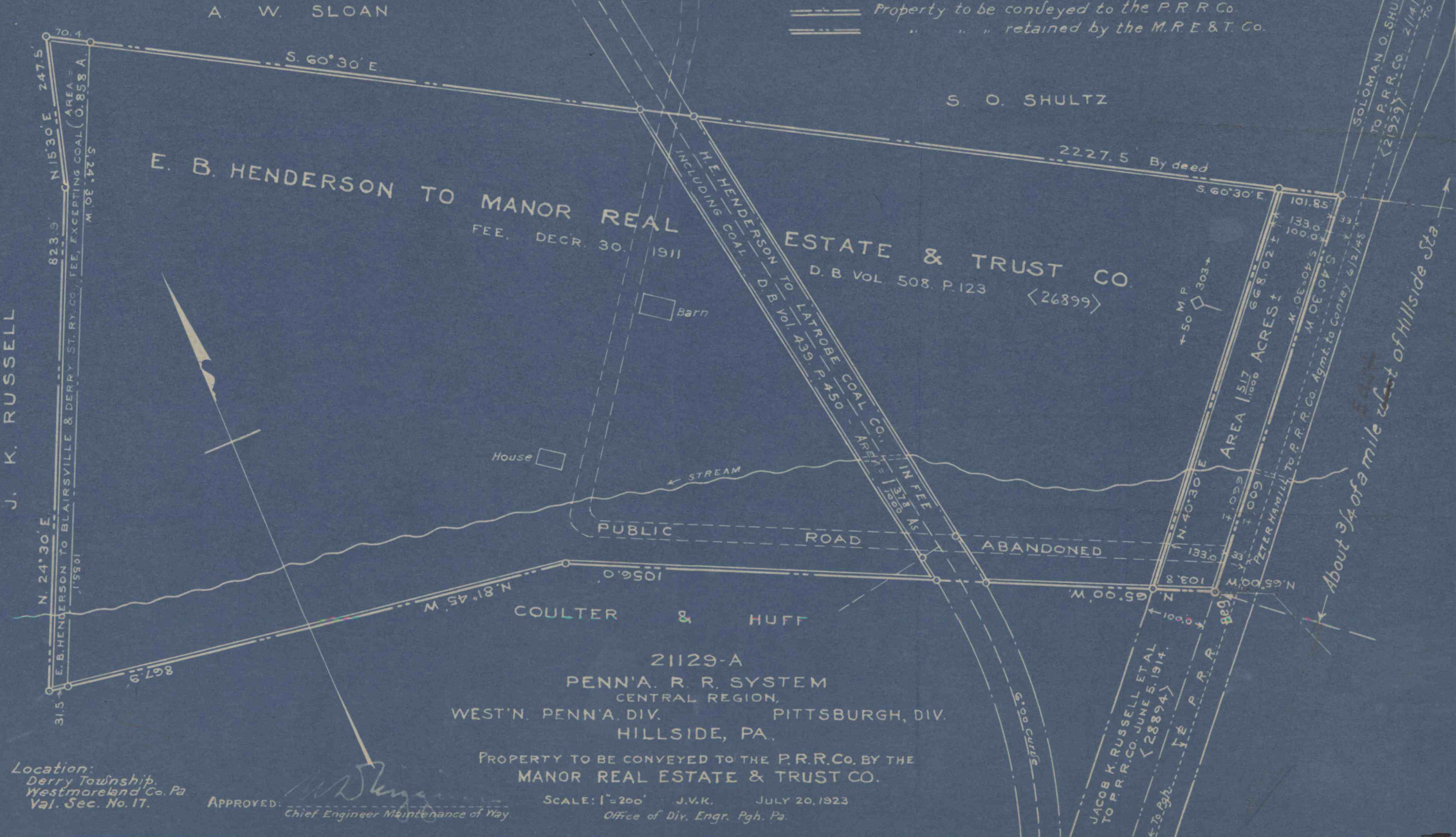


COLOR SCHEME

==== Property to be conveyed to the P.R.R. Co.
===== " " " retained by the M.R.E.&T. Co.



A. W. SLOAN

S. O. SHULTZ

E. B. HENDERSON TO MANOR REAL ESTATE & TRUST CO.
FEE, DEC. 30, 1911
D. B. VOL. 508, P. 123 (26899)
M. E. HENDERSON TO LATROBE COAL CO. INCLUDING COAL
D. B. VOL. 435, P. 450 AREA = 137.3 AC.
IN FEE = 126.0 AC.

J. K. RUSSELL

21129-A
PENN'A. R. R. SYSTEM
CENTRAL REGION,
WEST'N. PENN'A. DIV. PITTSBURGH, DIV.
HILLSIDE, PA.

PROPERTY TO BE CONVEYED TO THE P.R.R. CO. BY THE
MANOR REAL ESTATE & TRUST CO.

Location:
Derry Township,
Westmoreland Co. Pa
Val. Sec. No. 17.

APPROVED: *[Signature]*
Chief Engineer Maintenance of Way

SCALE: 1" = 200' J.V.K. JULY 20, 1923
Office of Div. Engr. Pgh. Pa.

5527/1 West 21129-A-56