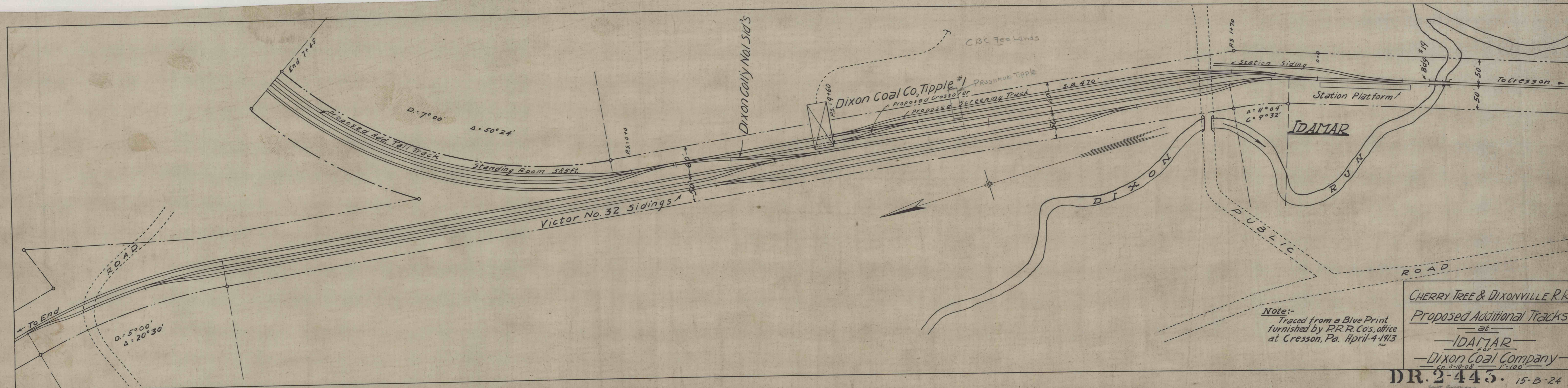


A-105



Note:-
 Traced from a Blue Print
 furnished by P.R.R. Co's. office
 at Cresson, Pa. April 4-1913

CHERRY TREE & DIXONVILLE R.R.
 Proposed Additional Tracks
 at
 IDAMAR
 for
 Dixon Coal Company
 Ch. 8-10-08 1"=100'

DR. 2-443. 15-B-24

A-105