

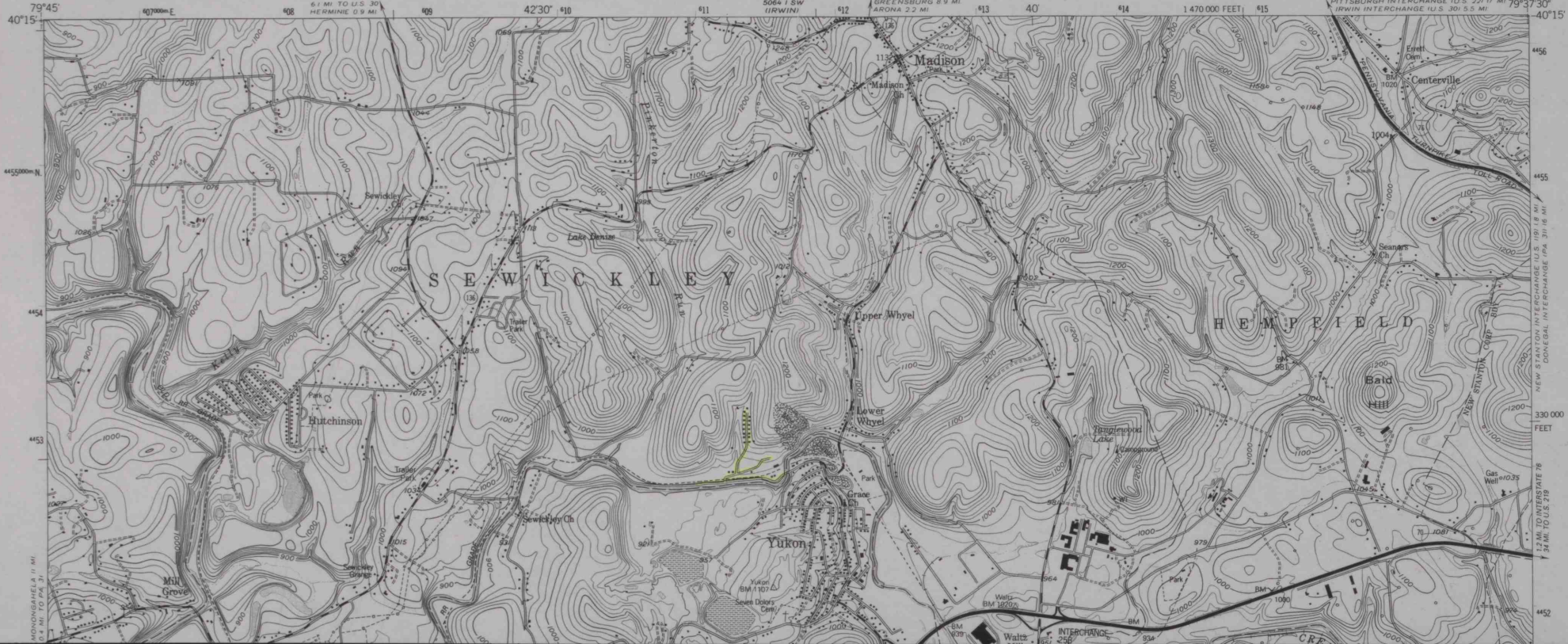
UNITED STATES
DEPARTMENT OF THE INTERIOR
GEOLOGICAL SURVEY

COMMONWEALTH OF PENNSYLVANIA
DEPARTMENT OF ENVIRONMENTAL RESOURCES
TOPOGRAPHIC AND GEOLOGIC SURVEY

SMITHTON QUADRANGLE
PENNSYLVANIA
7.5 MINUTE SERIES (TOPOGRAPHIC)
NW 1/4 CONNELLSVILLE 15 QUADRANGLE
PITTSBURGH INTERCHANGE U.S. 221 17 MI 79°37'30"
IRWIN INTERCHANGE U.S. 301 5.5 MI

Scale 1:50,000
(1:50,000)

Scale 1:50,000
(1:50,000)



MONONGAHELA 11 MI
0.2 MI TO PA 37

NEW STANTON INTERCHANGE U.S. 119 1.8 MI
DONEGAH INTERCHANGE PA 311 16 MI

Gas #10235
Well

4452