

EAST WHEATFIELD TOWNSHIP
INDIANA COUNTY
PERMIT NUMBER - 204-3
"B" OR LOWER KITTANNING SEAM

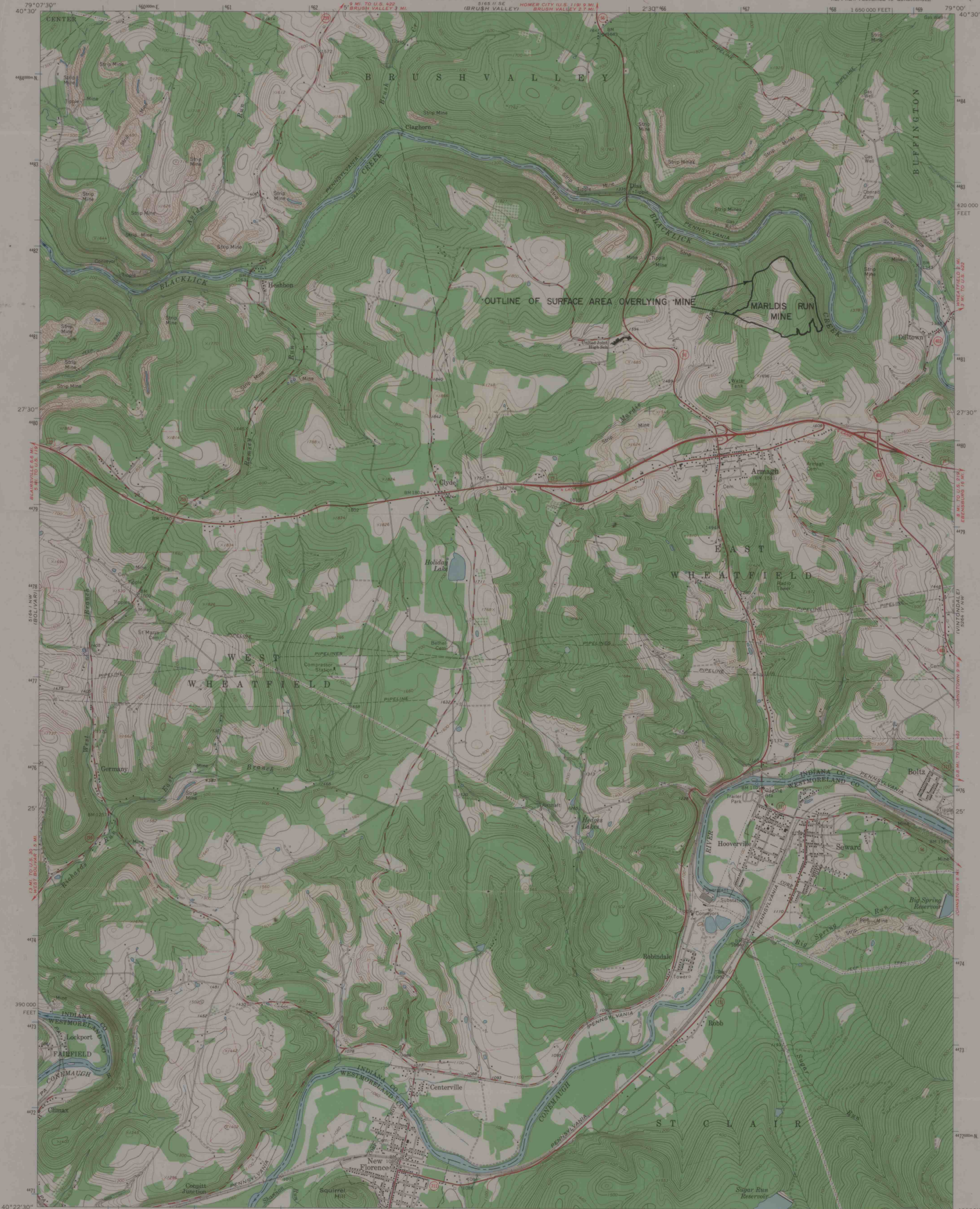
UNITED STATES
 DEPARTMENT OF THE INTERIOR
 GEOLOGICAL SURVEY

STATE OF PENNSYLVANIA
 DEPARTMENT OF INTERNAL AFFAIRS
 TOPOGRAPHIC AND GEOLOGIC SURVEY

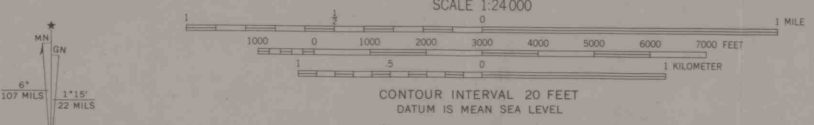
APPLICANT: **THE FLORENCE MINING CO.**

MINE LOCATED ON MAP BY KENNETH L. WOOD

PENNSYLVANIA
 7.5 MINUTE SERIES (TOPOGRAPHIC)
 NE/4 NEW FLORENCE 15' QUADRANGLE

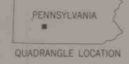


Mapped, edited, and published by the Geological Survey
 Control by USGS and USC&GS
 Topography by photogrammetric methods from aerial photographs
 taken 1962. Field checked 1964
 Polyconic projection. 1927 North American datum
 10,000-foot grid based on Pennsylvania coordinate system, south zone
 1,000-meter Universal Transverse Mercator grid ticks, zone 17,
 shown in blue
 Fine red dashed lines indicate selected fence and field lines where
 generally visible on aerial photographs. This information is unchecked



ROAD CLASSIFICATION

Heavy-duty	Light-duty
Medium-duty	Unimproved dirt
U.S. Route	State Route



NEW FLORENCE, PA.
 NE/4 NEW FLORENCE 15' QUADRANGLE
 N4022.5—W7900/7.5

THIS MAP COMPLIES WITH NATIONAL MAP ACCURACY STANDARDS
 FOR SALE BY U. S. GEOLOGICAL SURVEY, WASHINGTON, D. C. 20242
 A FOLDER DESCRIBING TOPOGRAPHIC MAPS AND SYMBOLS IS AVAILABLE ON REQUEST