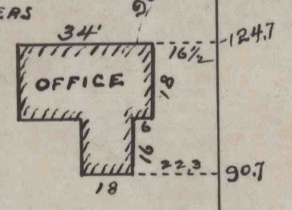


SURVEY OF PROPERTY OF  
**AMERICAN TIN PLATE CO.**  
 BLAIRSVILLE PA.

SCALE 1"=50'

WILSON AND SMITH  
 CIVIL ENGINEERS

APRIL 18<sup>th</sup> 1901



ORIGINAL STAKE  
 REPLACED BY  
 IRON T-RAIL

AREA WEST OF EAST LINE  
 OF LIBERTY ST.  
 TO ACTUAL WATER LINE = 2.013 A.  
 AREA IN SAME OCCUPIED  
 BY R.R. RIGHT OF WAY  
 30' WIDE BY 1867' LONG  
 = 0.126 A.  
 NET AREA = 1.887 A.

AREA WEST OF WEST LINE  
 OF LIBERTY ST. AND TO LOW  
 WATER LINE OF CONEMAUGH  
 RIVER AS GIVEN IN DEED  
 = 1.360 A.

AREA IN SAME OCCUPIED  
 BY R.R. RIGHT OF WAY  
 134.6' x 30' = 0.093 A.  
 NET AREA = 1.267 A.

S. 12° 32' W. 439.2 (BY DEED)  
 ACTUAL MEASURE 468.0' TO WATER

LAND OF M. R. JOHNSON'S HEIRS  
 N. 12° 32' E. 587.9

LIBERTY STREET  
 N. 12° 32' E. 510.0

LANDS OF BLAIRSVILLE LAND IMPROVEMENT CO.  
 N. 7° 28' W 509.0'

5003  
 B19 2305