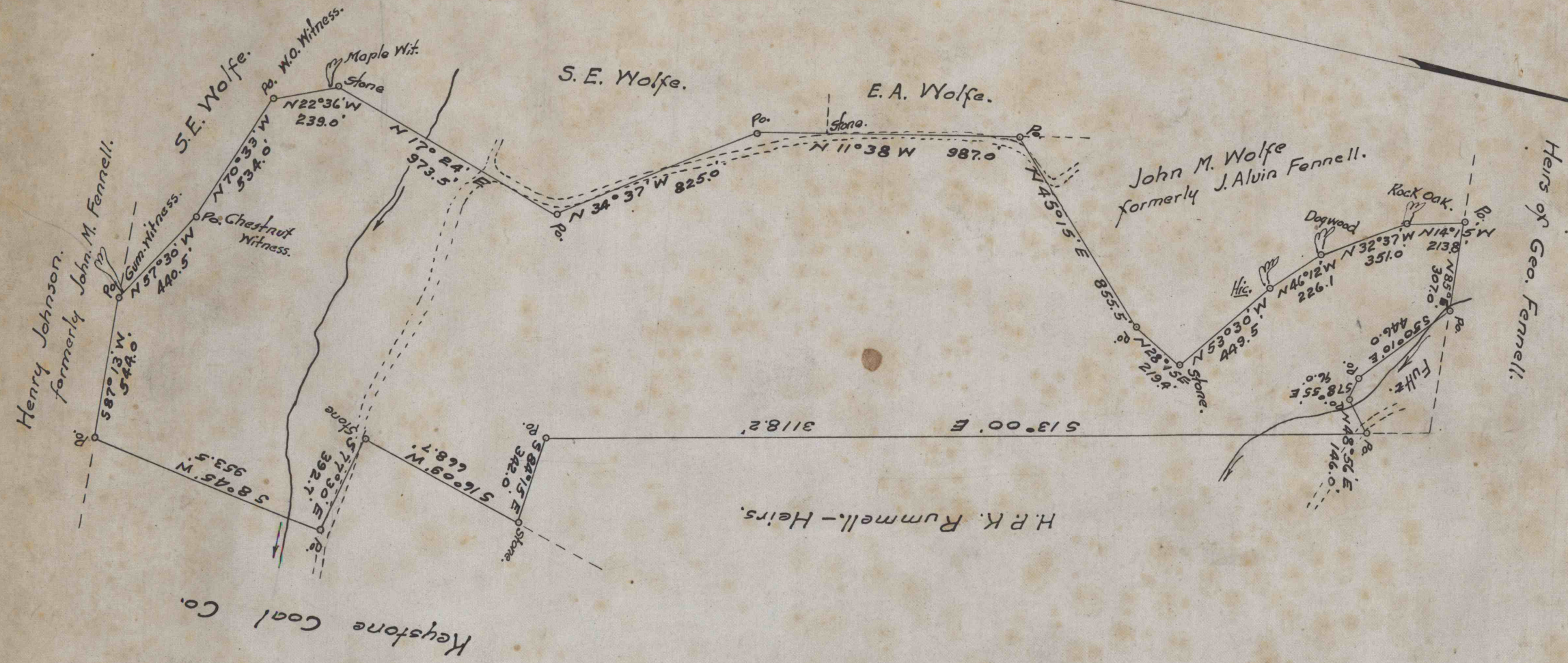


4-4-1914  
4-4-1914



See L.N. 3031 4-6

THIS DOES NOT CHECK WITH DEED.

Coal Land of J. Alvin Fennell.  
Salem Twp. Westmoreland Co. Penna.  
Containing 111.55 Ac's. - Scale 1"=500'  
Albert Smith, C.E. Saltsburg, Pa. 10-8-1914.

C.M.