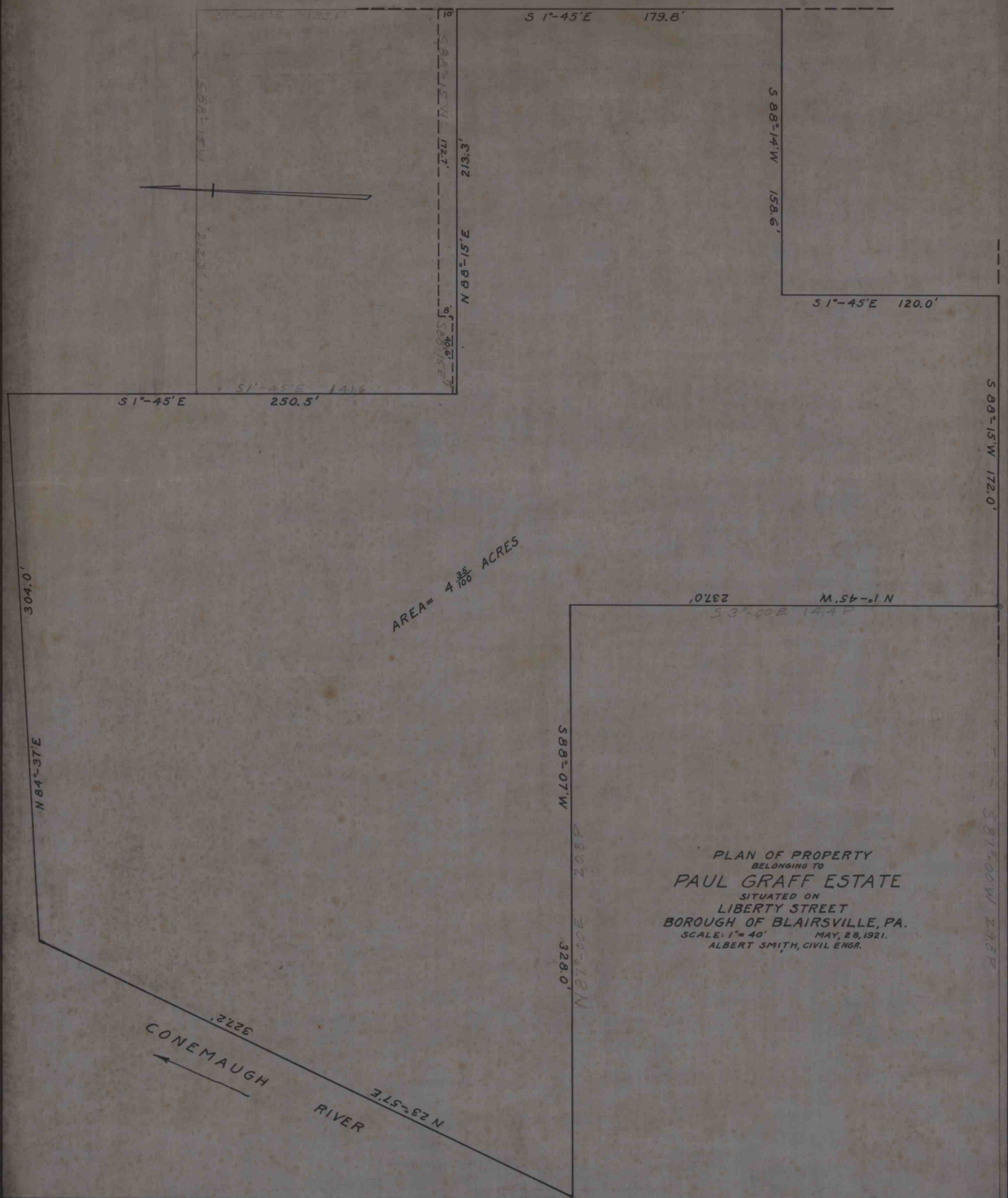


LIBERTY ST.



AREA = 4 ³⁵/₁₀₀ ACRES

PLAN OF PROPERTY
 BELONGING TO
PAUL GRAFF ESTATE
 SITUATED ON
 LIBERTY STREET
 BOROUGH OF BLAIRSVILLE, PA.
 SCALE: 1" = 40' MAY, 28, 1921.
 ALBERT SMITH, CIVIL ENGR.