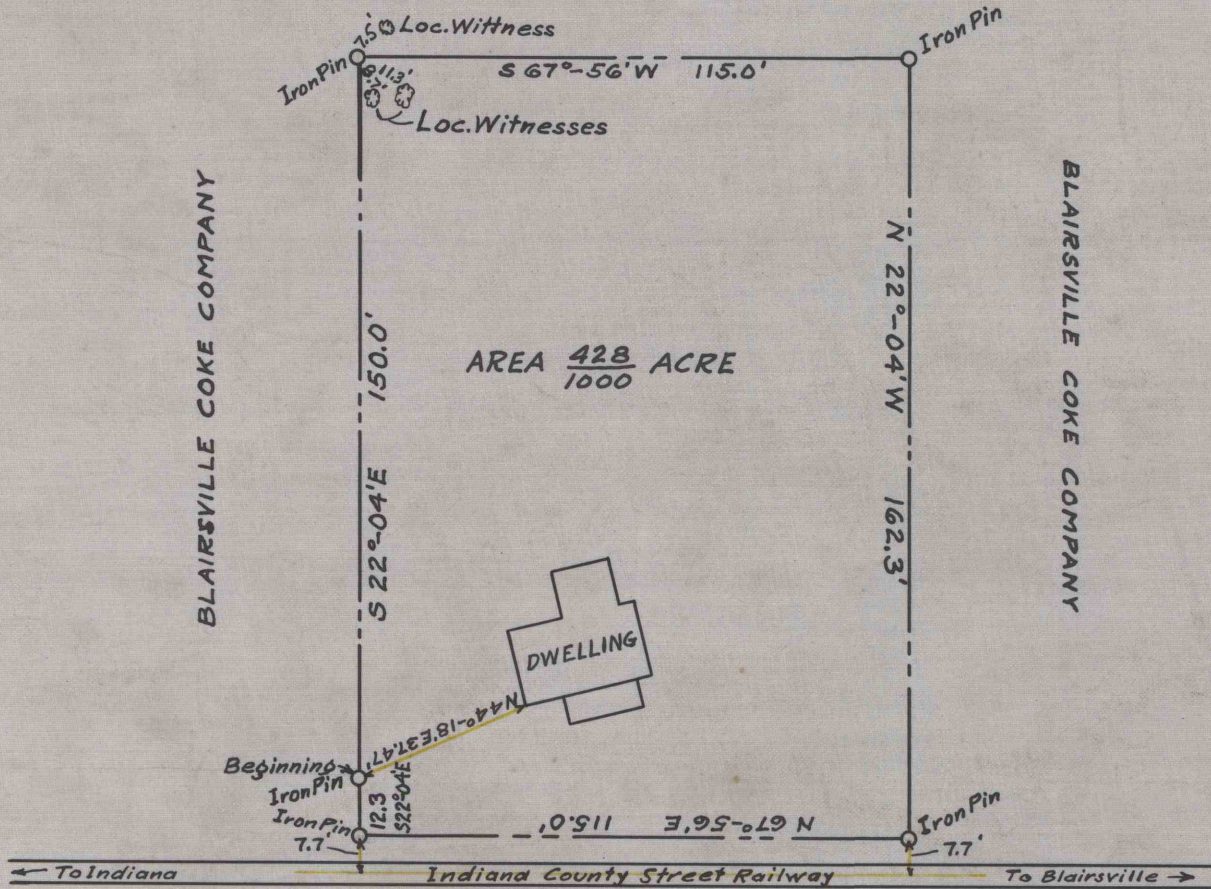


B're. 309A-5-6

BLAIRSVILLE COKE COMPANY

BLAIRSVILLE COKE COMPANY

BLAIRSVILLE COKE COMPANY



BLAIRSVILLE COKE COMPANY

PLAN OF PROPERTY
TO BE CONVEYED TO

IRVIN LEWIS

SCALE: 1"=40' MAY 26, 1923
ENGINEERING DEPT., BLAIRSVILLE, PENNA.

B.C. Co. 5526 ~~309A-5-6~~