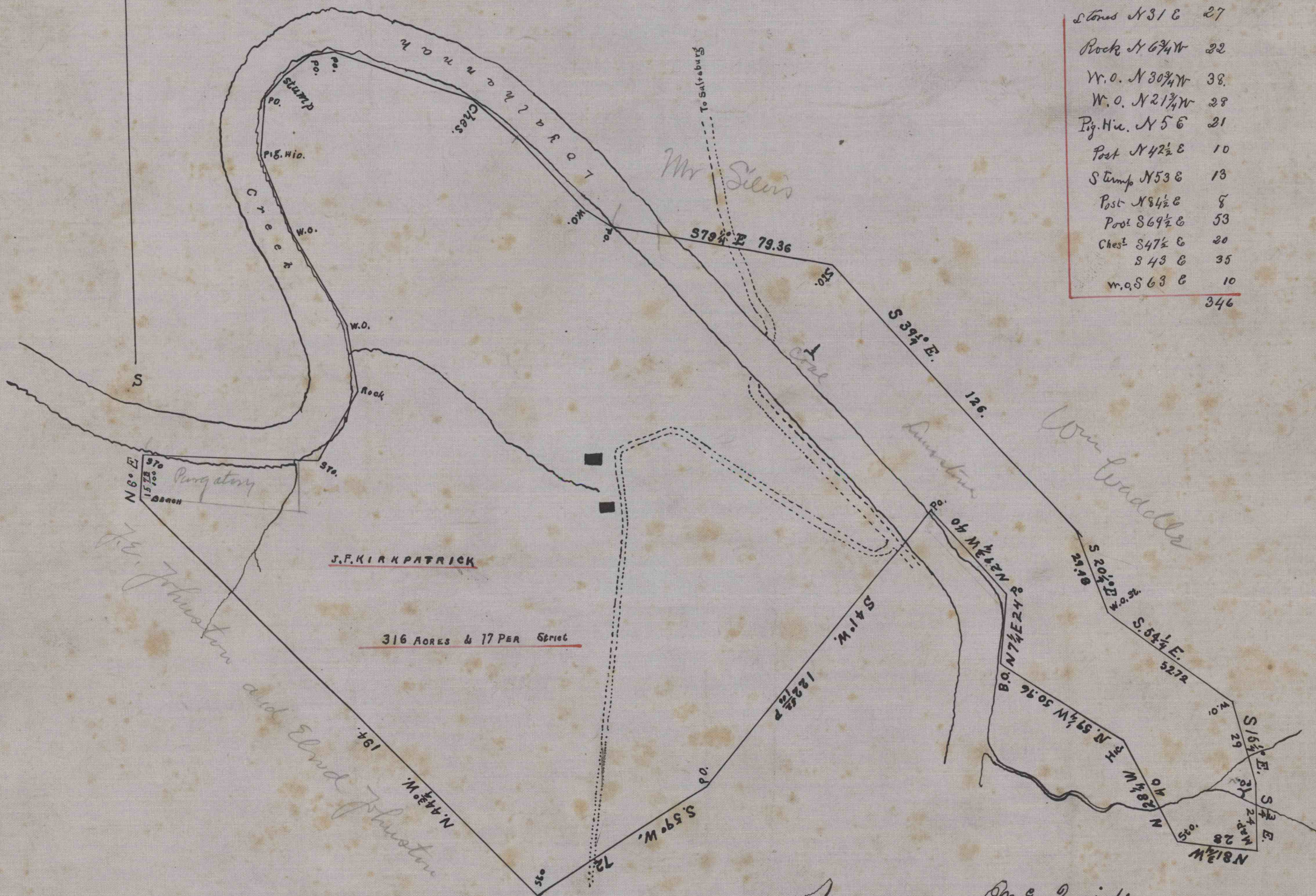




Courses + distances up Creek.

Beginning at Stone S 87 1/4 E 61.

Stone N 31 E	27
Rock N 67 1/4 W	22
W.O. N 30 1/4 W	38
W.O. N 21 1/4 W	28
Fig. Hic. N 5 E	21
Post N 42 1/2 E	10
Stump N 53 E	13
Post N 84 1/2 E	8
Post S 69 1/2 E	53
Chest S 47 1/2 E	20
S 43 E	35
W.O. S 63 E	10
<hr/>	
	346



William McQuaide

Not owned by Martles + McCallough

Surveyed the above tract of land for J. F. Kirkpatrick Nov 7th 1857  
 Containing three hundred seven acres and seven tenths  
 Situate and lying in Yorkhammab sp. Nottingham Co Pa

William McQuaide

L.H. 26821-8  
5308