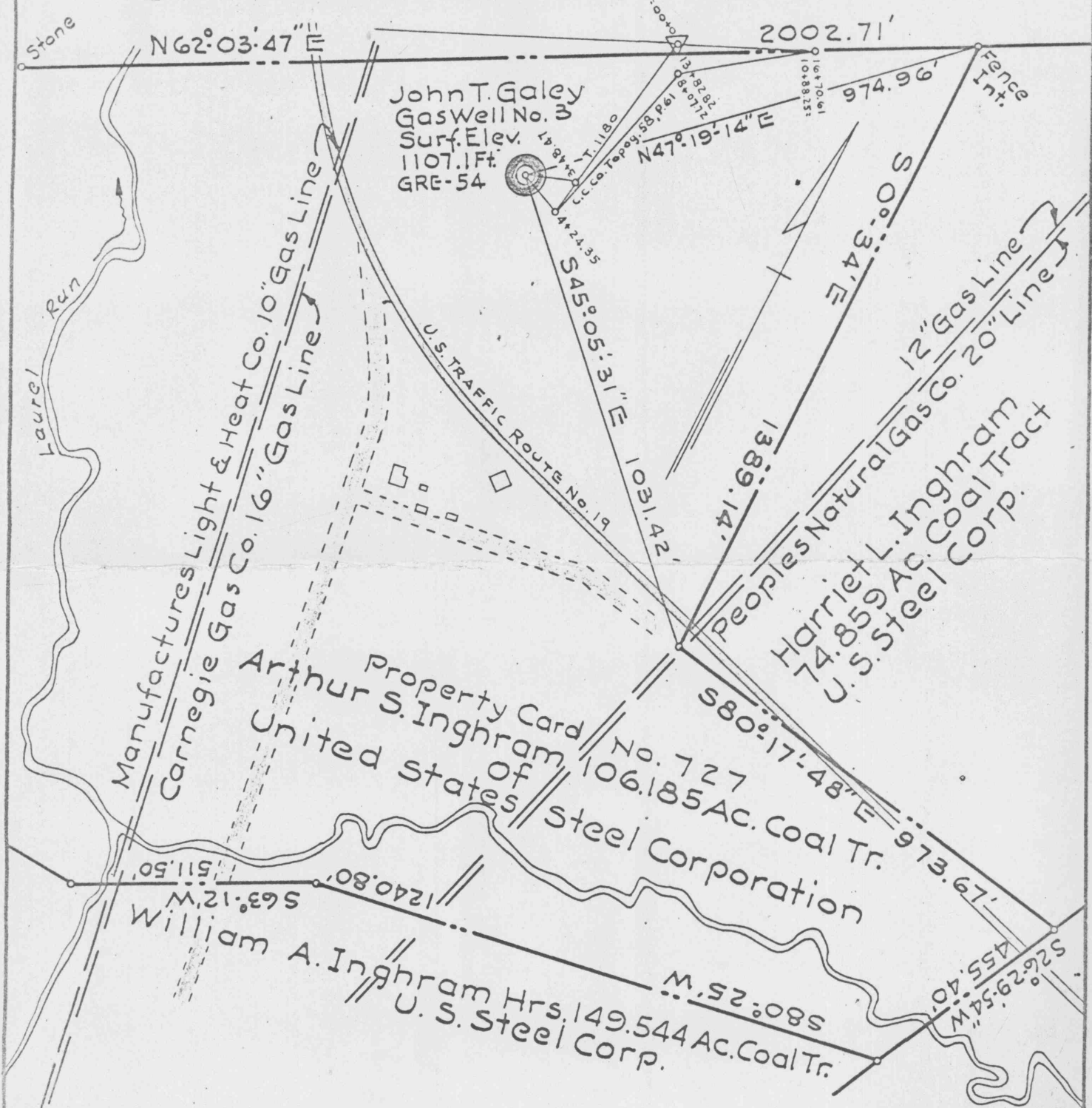


Coal Lands of Buckeye Coal Co.

To Waynesburg



UNITED STATES STEEL CORPORATION
CUMBERLAND COAL FIELD
PLAN SHOWING LOCATION OF GAS WELL DRILLED BY
JOHN T. GALEY
THROUGH PITTSBURGH COAL SEAM OF THE
ARTHUR S. INGHAM 106.185 ACRE COAL TRACT
 Franklin Township, Greene County, Pa.
 Scale 1" = 300' February 27, 1963

4-E-1332