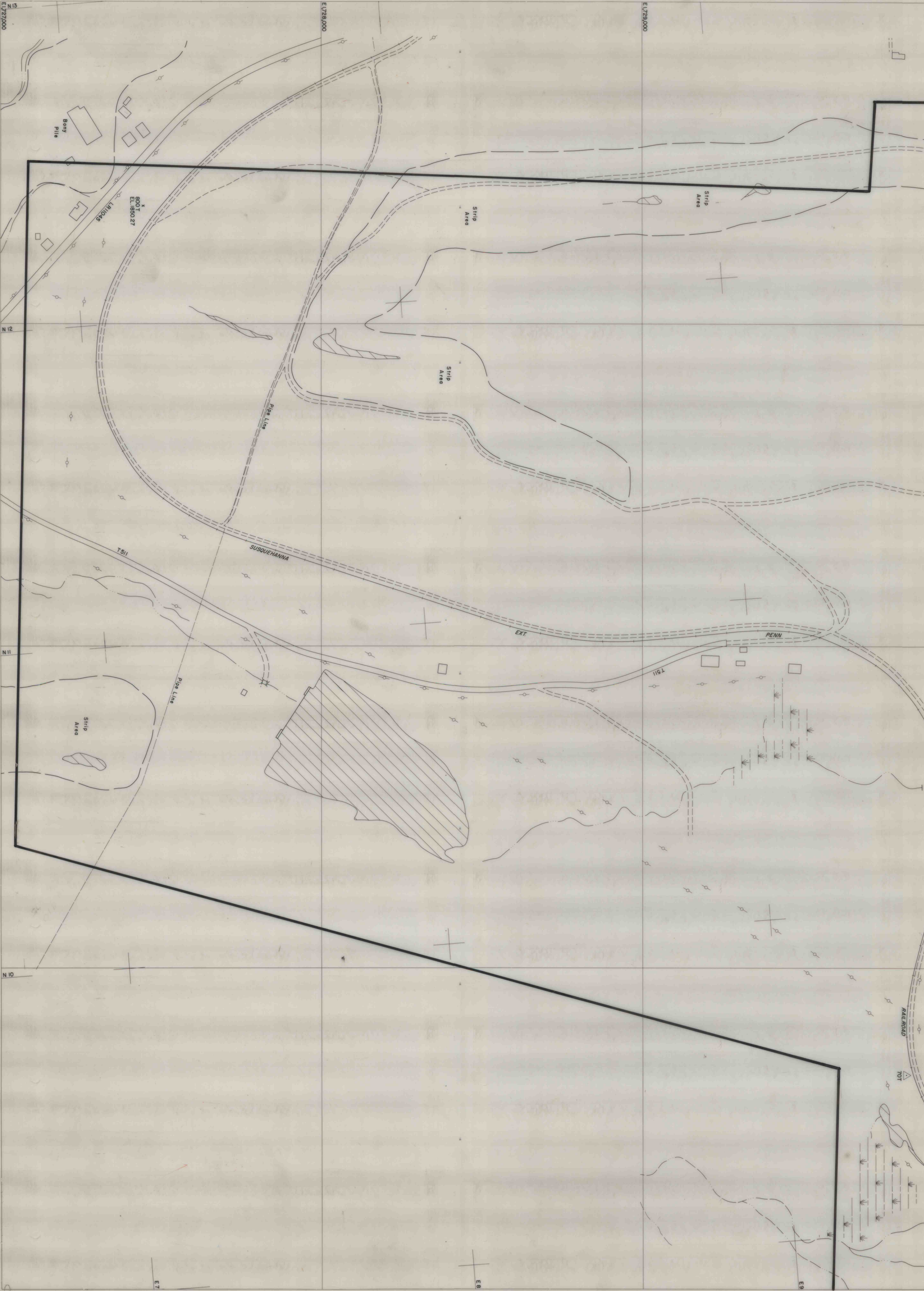


N 462,000
E 1730,000
N 461,000
N 460,000
N 459,000
N 458,000



Preliminary compiled from aerial photography taken May, 1975
L. Robert Kinball, Consulting Engineers, Bensalem, Pennsylvania, for
BARNES & TUCKER COMPANY

4421



BARNES & TUCKER COMPANY
LANCASHIRE NO. 20 MINE
EAST CARROLL TOWNSHIP, CAMBERA COUNTY, PENNSYLVANIA
SCALE: 1"=200'
DATE: JULY, 1976

1A

MATCH TO SHEET 2A