

E 751,000
N 449,000
N 448,000
N 447,000
N 446,000

02-02-108

02-02-110.1
DONALD F. KANE

02-02-110.2
CAROL A.
BLACKBURN

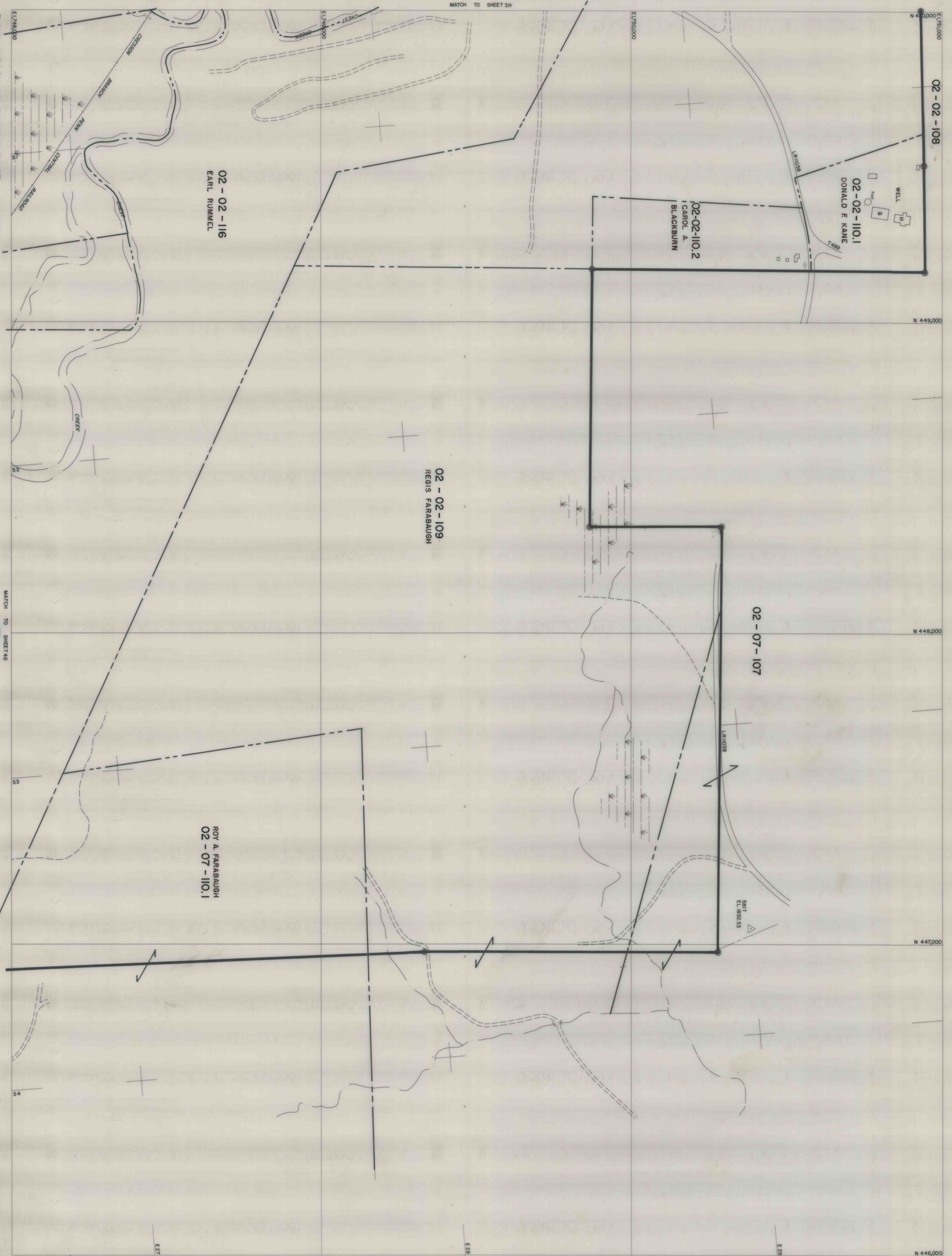
02-02-109
REGIS FARABAUGH

02-07-107

ROY A. FARABAUGH
02-07-110.1

02-02-116
EARL RUMMEL

MATCH TO SHEET 3H



Planimetry compiled from aerial photography taken May, 1975
L. Robert Kinball, Consulting Engineer, Ebensburg, Pennsylvania, for
BARNES & TUCKER COMPANY
Planimetric updated from aerial photography dated March 7, 1983

4421

MATCH TO SHEET 4G



BARNES & TUCKER COMPANY
LANCASTERSHIRE NO. 20 MINE
EAST CARROLL TOWNSHIP, CAMBRIA COUNTY, PENNSYLVANIA
SCALE 1" = 200'
DATE: JULY, 1976

4H