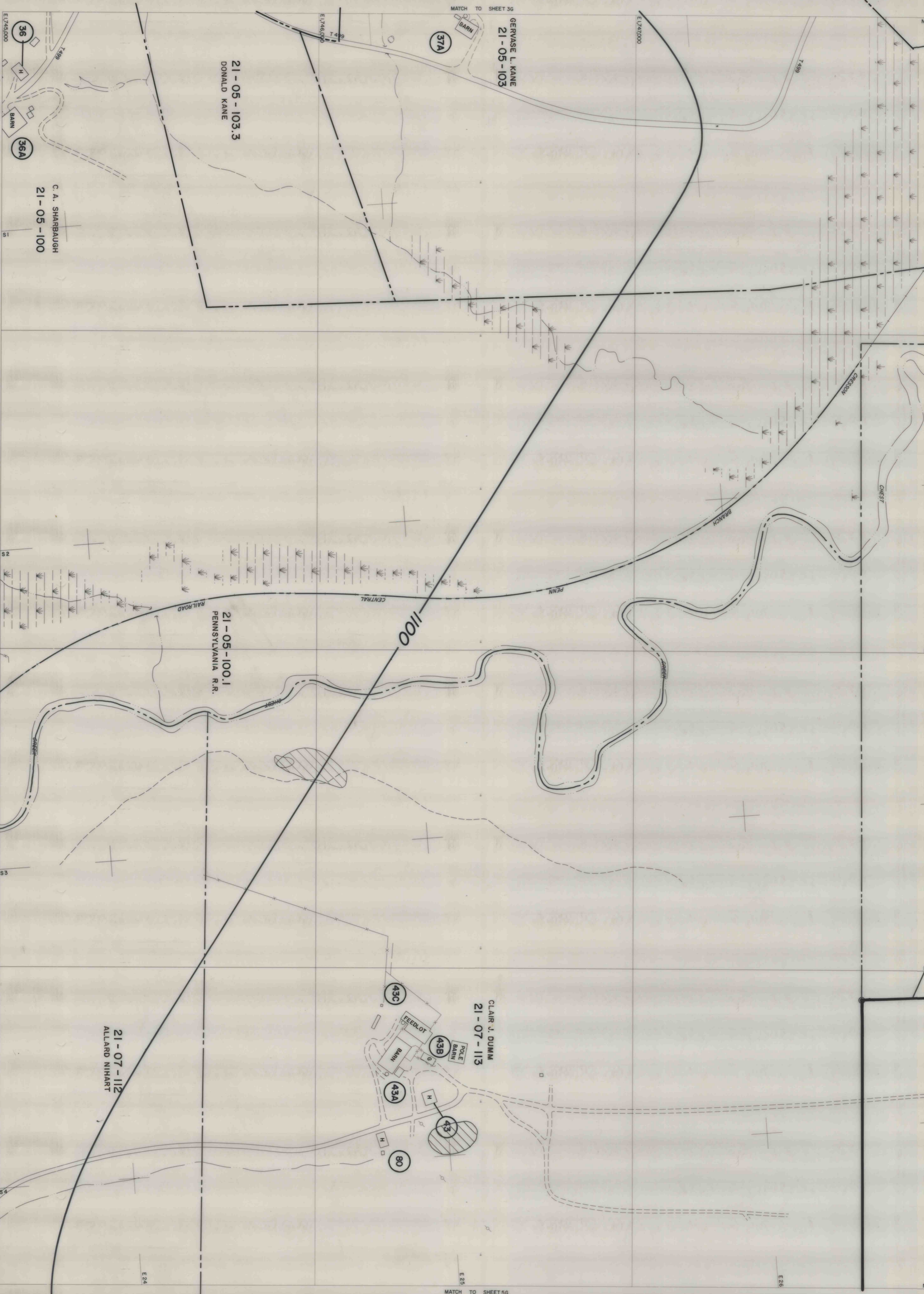


E 1748,000  
N 450,000  
E 1747,000  
N 449,000  
N 448,000  
N 447,000  
N 446,000



Planimetry compiled from aerial photography taken May, 1975  
L. Robert Kinball, Consulting Engineer, Ebensburg, Pennsylvania, for  
BARNES & TUCKER COMPANY  
Planimetry updated from aerial photography dated March 7, 1983

4421

BARNES & TUCKER COMPANY  
LANCASHIRE NO 20 MINE  
EAST CARROLL TOWNSHIP, CAMBRIA COUNTY, PENNSYLVANIA  
SCALE: 1"=200'  
DATE: JULY, 1976

4G