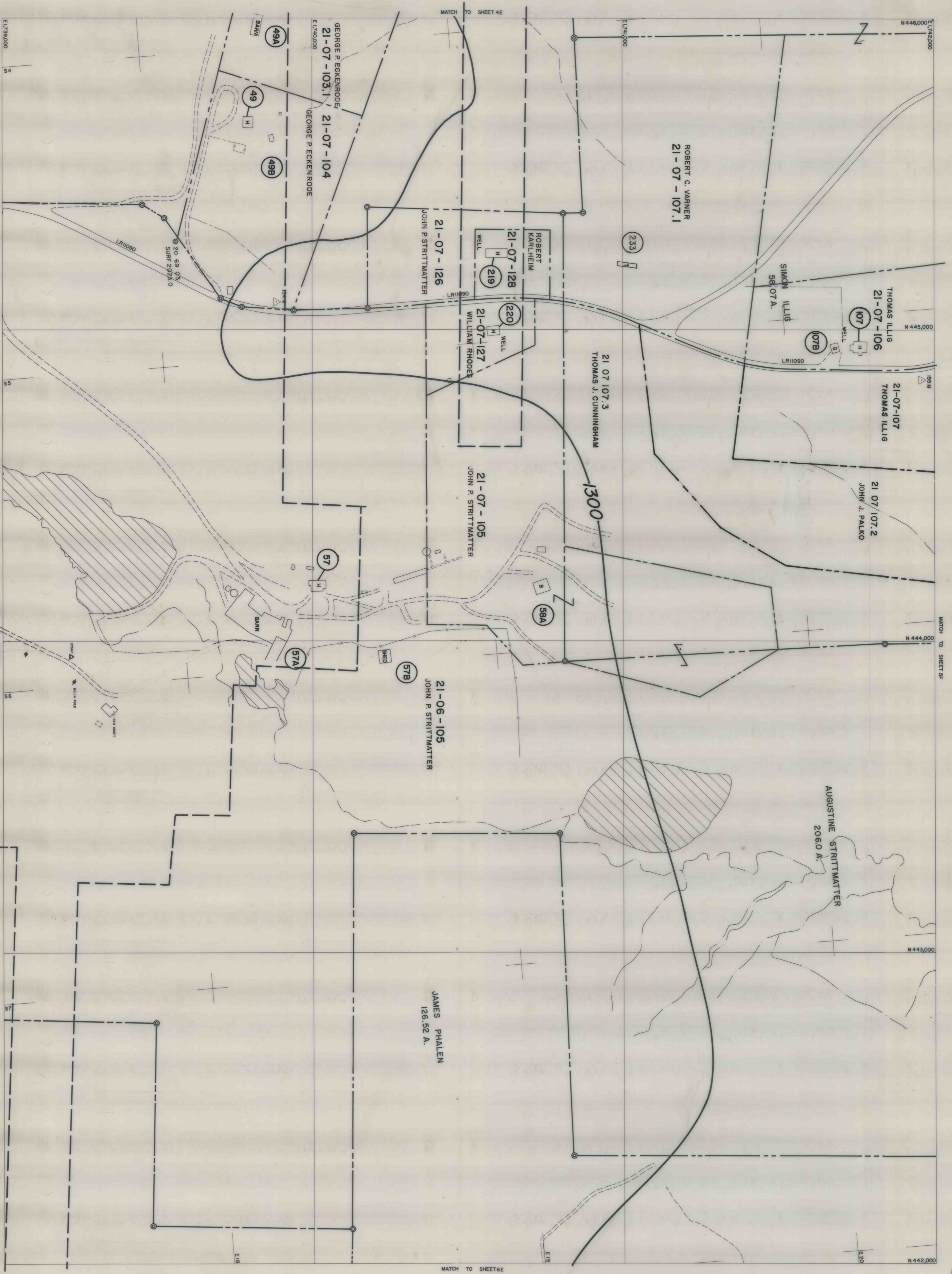


Prometry compiled from aerial photography taken May, 1975
L. Robert Kimball, Consulting Engineer, Esbensburg, Pennsylvania, for
BARNES & TUCKER COMPANY
Prometry updated from aerial photography dated March 7, 1983

4421

BARNES & TUCKER COMPANY
LANCASHIRE NO. 20 MINE
EAST CARROLL TOWNSHIP, CAMBRIA COUNTY, PENNSYLVANIA
SCALE 1" = 200'
DATE JULY, 1978



5E