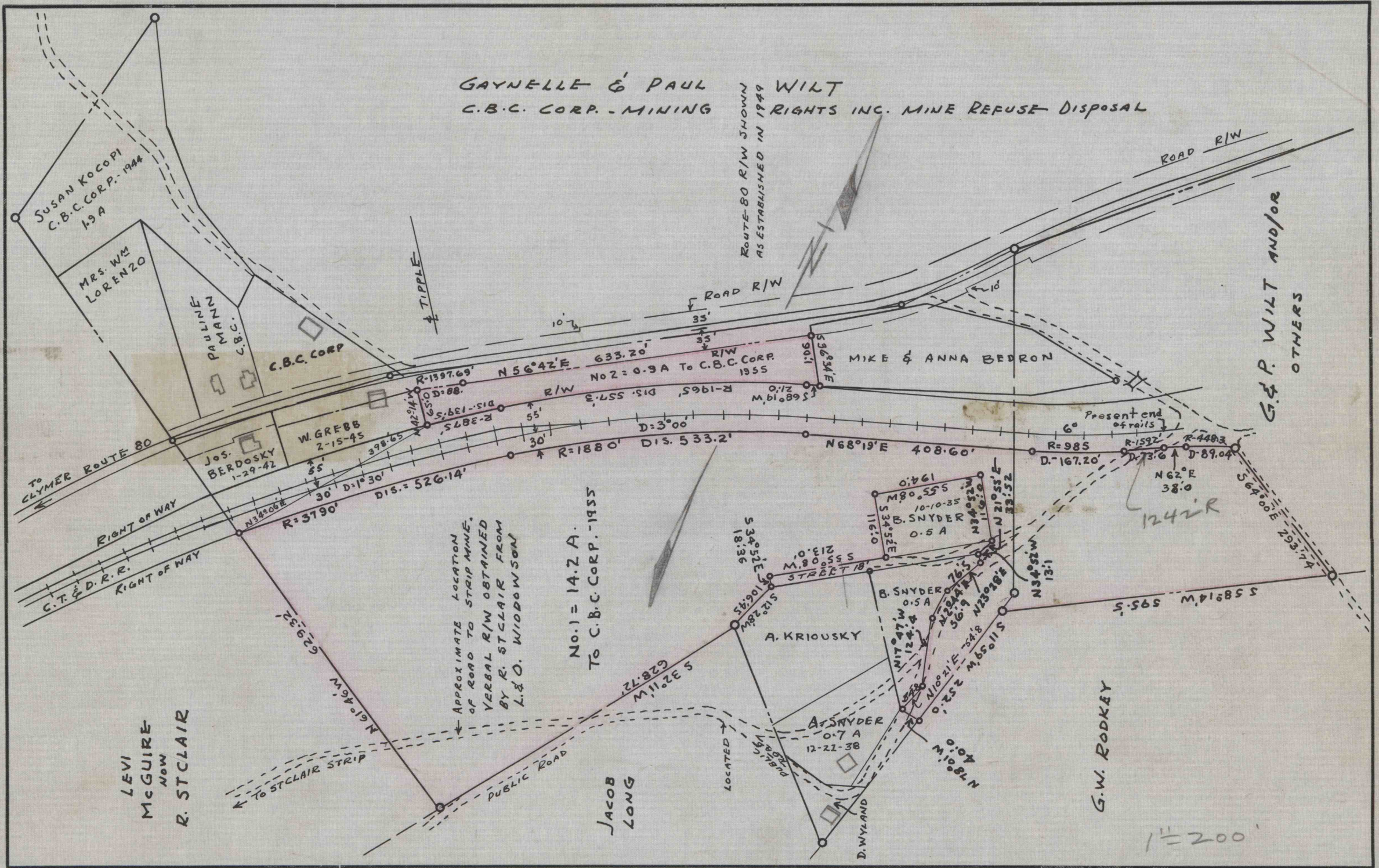


GAYNELLE & PAUL WILT  
 C.B.C. CORP. - MINING RIGHTS INC. MINE REFUSE DISPOSAL



SUSAN KOCOPI  
 C.B.C. CORP. - 1944  
 1.9 A

MRS. WM  
 LORENZO

PAULINE  
 MANN  
 C.B.C. CORP.

C.B.C. CORP

JOS.  
 BERDOSKY  
 1-29-42

W GREBB  
 2-15-45

MIKE & ANNA BEDRON

B. SNYDER  
 10-10-35  
 0.5 A

A. KRIOUSKY

A. SNYDER  
 12-22-38  
 0.7 A

G.W. RODKEY

G. & P. WILT AND/OR  
 OTHERS

LEVI  
 MCGUIRE  
 NOW  
 R. STCLAIR

JACOB  
 LONG

1"=200'

APPROXIMATE LOCATION  
 OF ROAD TO STRIP MINED,  
 VERBAL R/W OBTAINED  
 BY R. STCLAIR FROM  
 L. & O. WIDDOWSON

No. 1 = 14.2 A.  
 TO C.B.C. CORP. - 1955

ROUTE 80 R/W SHOWN  
 AS ESTABLISHED IN 1949

ROAD R/W

TO CLYMER ROUTE 80

RIGHT OF WAY  
 C.T. & D.R.R.  
 RIGHT OF WAY

TO STCLAIR STRIP

PUBLIC ROAD

LOCATED

Present end  
 of rails

1242R