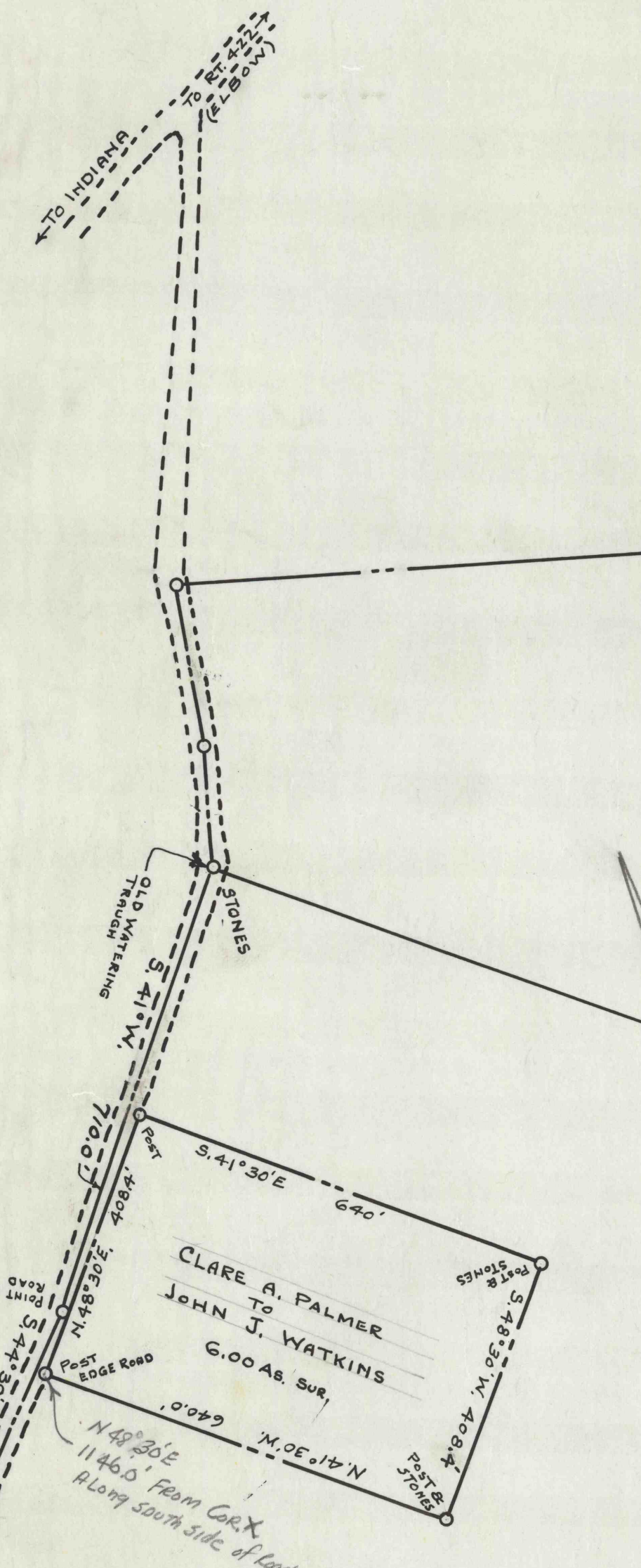
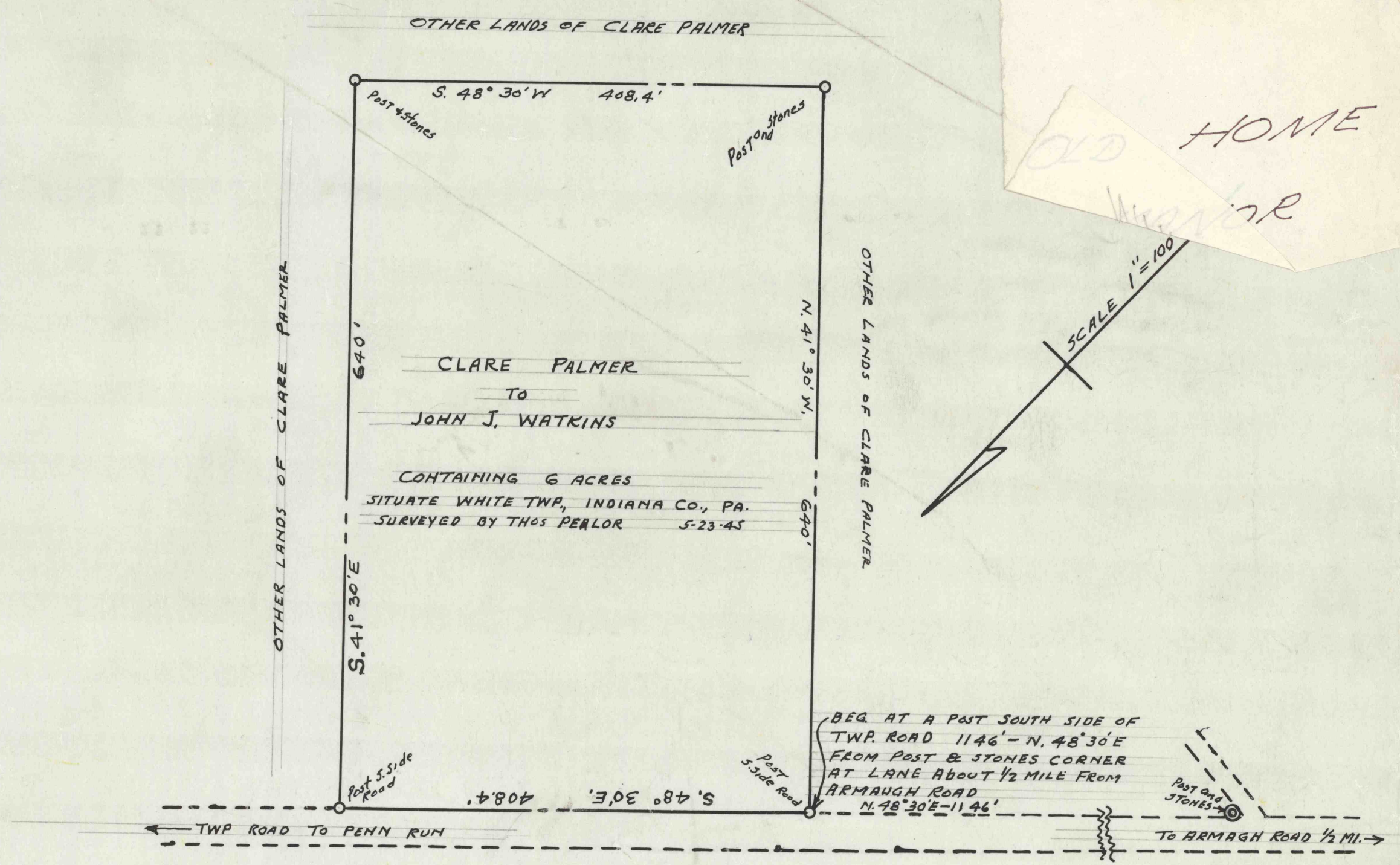


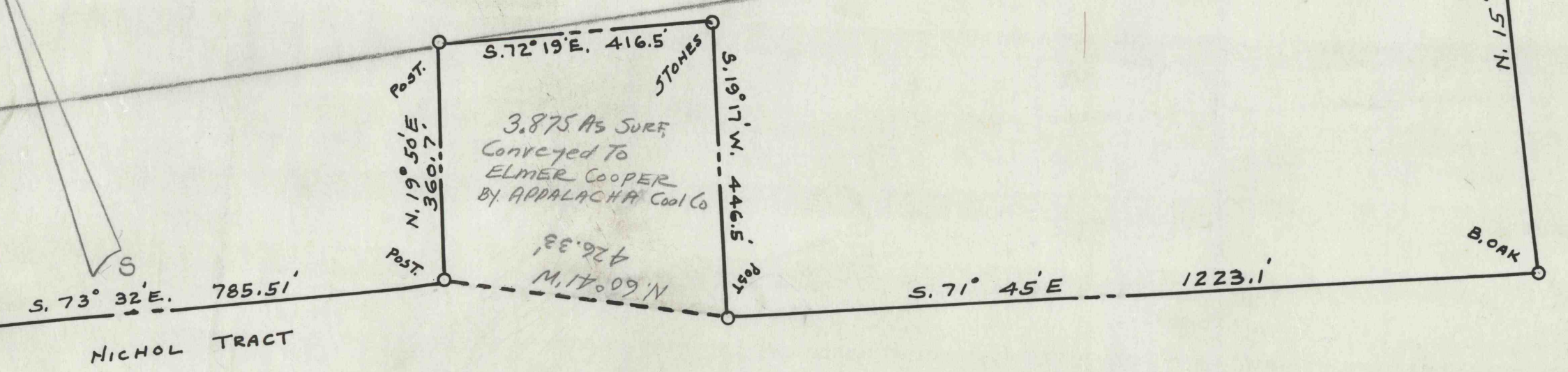
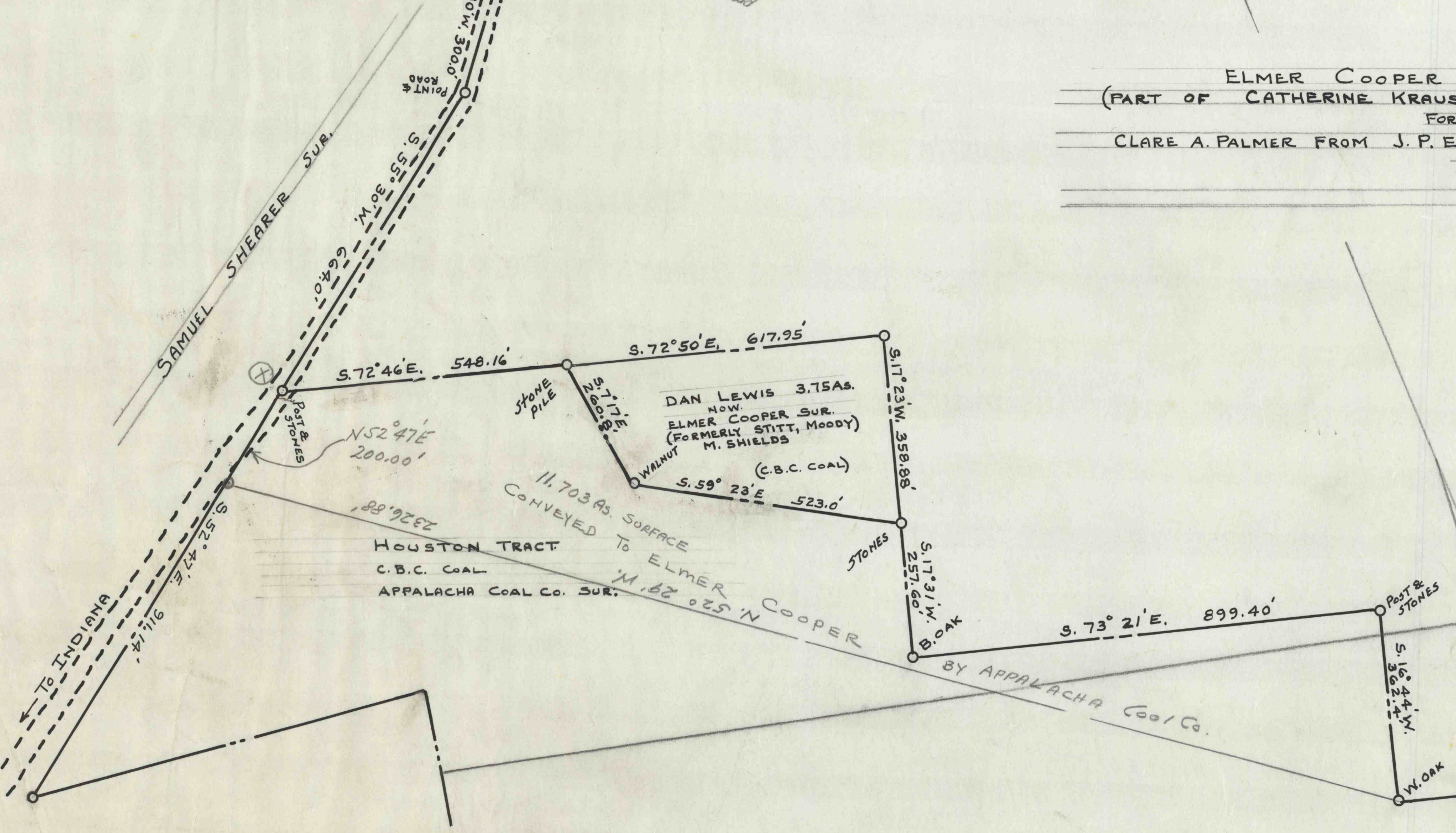
NO HOME
 MINE

SCALE 1" = 100'



W. R. MAHAN 107,025 A. TRACT (C.B.C. COAL)
 NOW
 JOE BARRISH SUR. (FORMERLY M. T. SMITH)
 N. 48° 30' N 1085.9'

ELMER COOPER ACRES SUR.
 (PART OF CATHERINE KRAUSCOPE 211,292 ACRE TRACT)
 FORMERLY CONVEYED TO
 CLARE A. PALMER FROM J. P. ELKINS ESTATE FROM KRAUSCOPE ET AL.



PART OF CATHERINE KRAUSCOPE 211,292 ACRE TRACT & DAN LEWIS 3.75 A. TRACT
 NOW OWNED BY (SURFACE ONLY)
 ELMER COOPER
 SITUATE IN WHITE TWP. INDIANA COUNTY, PENNA. SCALE 1" = 200'
 THIS PARCEL WAS CONVEYED BY J. P. ELKINS EST. TO CLARE A. PALMER THEN TO COOPER
 MAP MADE FROM SURVEYS AND OFFICE RECORDS BY THOS. PEALOR & Q. B. JONES ENGINEERS
 THIS MAP TRACED FROM PRINT 2-27-51 (NO DATE ON ORIGINAL PRINT)

DISCLAIMER: This map is provided as a courtesy to the Pennsylvania Bureau of Deep Mine Safety by American Premier Underwriters, Inc. (fka The Penn Central Railroad Corporation) and its subsidiary United Railroad Corp., which own or owned, but do not operate, the coal assets depicted hereon.
 American Premier Underwriters, Inc. and United Railroad Corp. disclaim any representation or duty to any person as to the accuracy or completeness of this map or its fitness for any particular mining, safety or real estate related purpose. Any person who uses this map for any reason undertakes an independent duty to verify its accuracy and completeness, assumes all risks of its use, and agrees to hold American Premier Underwriters, Inc., United Railroad Corp. and their respective affiliates, shareholders, directors, officers and employees harmless from damage or liability arising from its use.

C-214