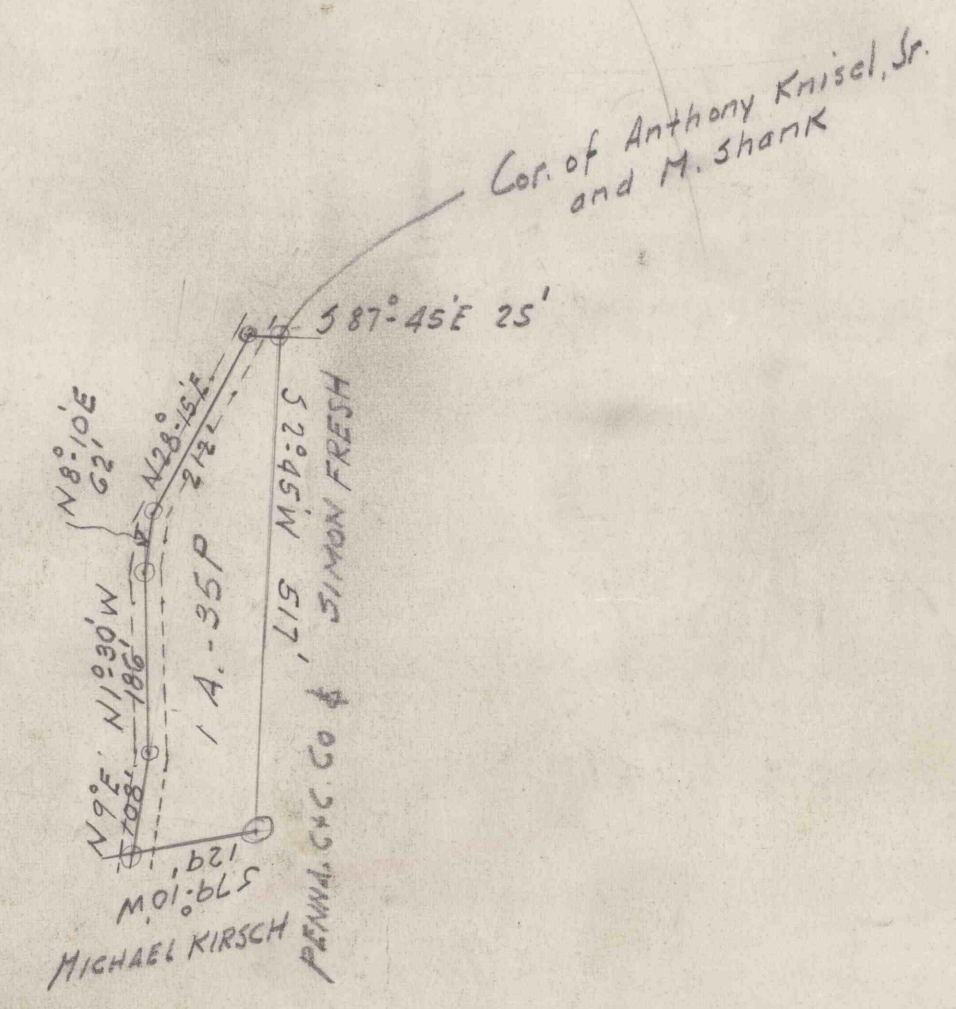
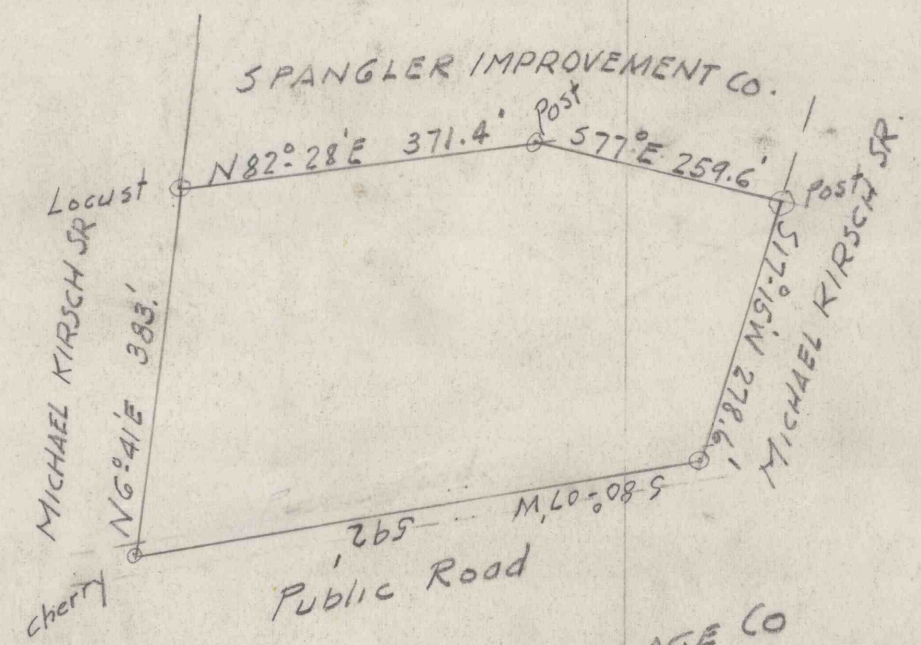


SCALE 1" = 200'

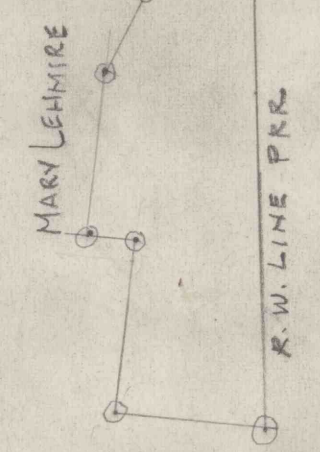


MAGDALENE LUBERT
 To
 WALTER YASICK, ETUX.
 1 A - 35 P. SURF
 D.B. VOL. 607 P. 326

Cor. of Anthony Knisel, Jr.
 and M. Shank

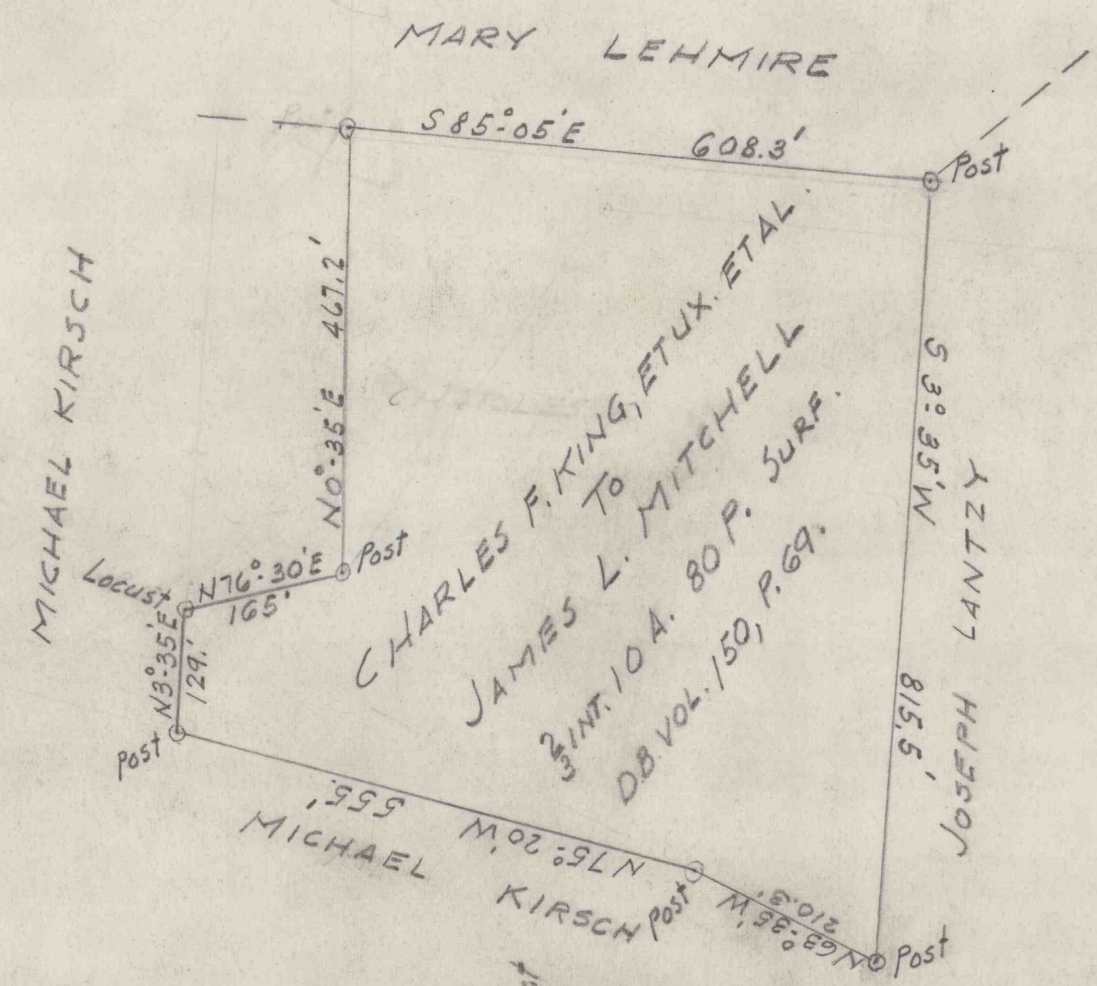


The ST. BENEDICT VILLAGE CO.
 TO
 CARROLLTOWN COAL CO.
 4 A. - 120 P. SURF.
 D.B. VOL. 307 P. 625

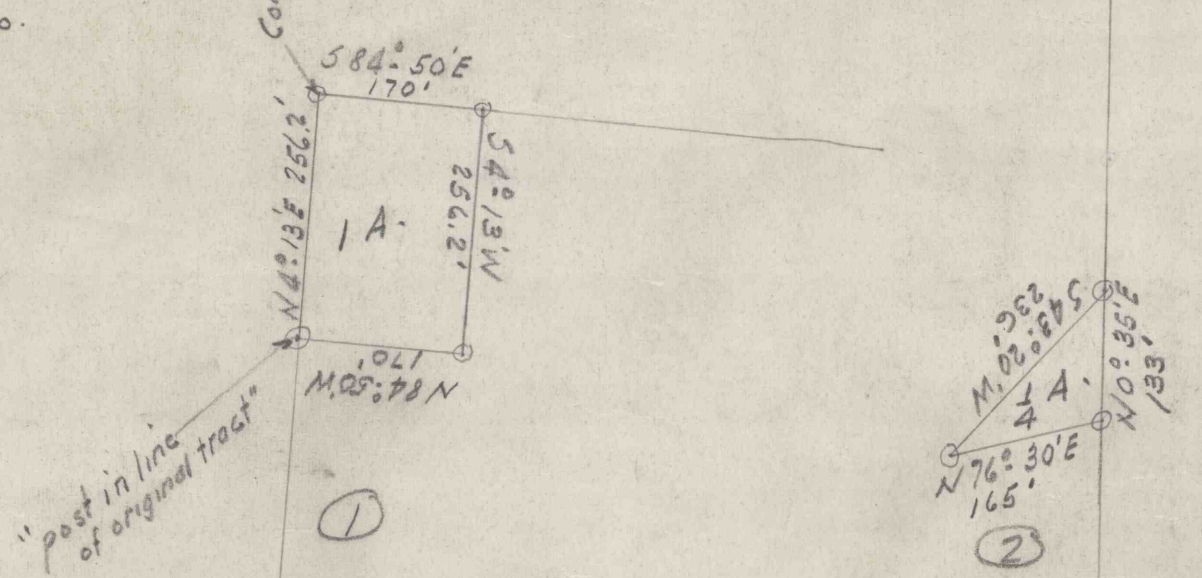


"South west corner
 of a ten acre
 eighty perch piece
 of surface now in
 possession of Penn. Co.
 leased to them by
 the Spangler Carbon
 Coal Mining Co., who
 purchased it from
 Michael Kirsch."

JOSEPH LETCHINSKI ETUX.
 To
 PENNA. COAL & COKE CO.
 5.2 P. SURF.
 D.B. VOL. 190, P. 231



MICHAEL KIRSCH SR.
 To
 PENNA. COAL & COKE CO.
 D.B. VOL. 215, P. 507.



150
 170
 91
 44

Ohio River Co