

N



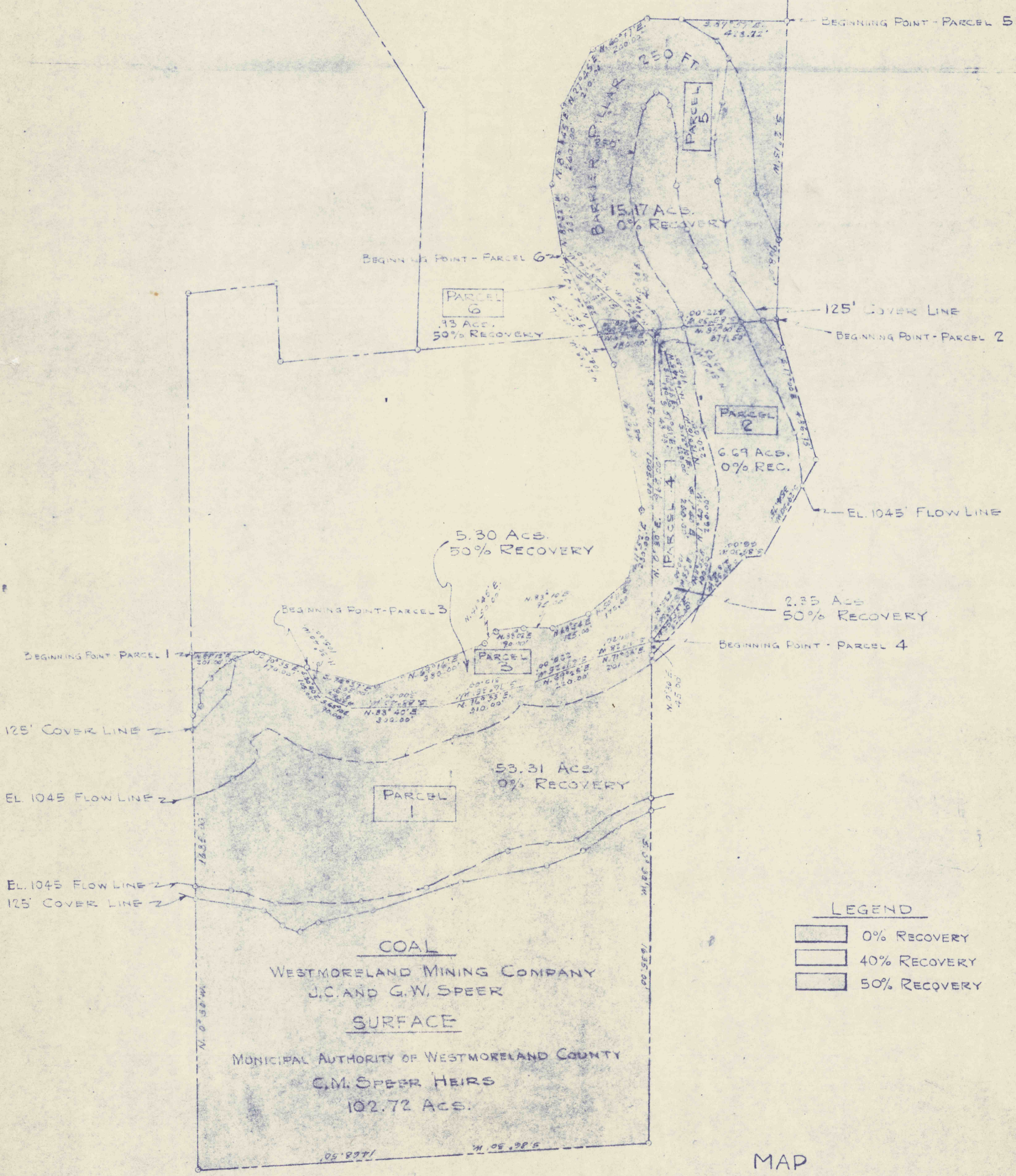
COAL

WESTMORELAND MINING COMPANY - 7/8 INT. - SEE NOTE  
I.A. BOWMAN

SURFACE

MUNICIPAL AUTHORITY OF WESTMORELAND COUNTY  
LAWRENCE H. REMALEY  
90.78 ACS.

NOTE: THE MUNICIPAL AUTHORITY OF WESTMORELAND COUNTY NOW OWNS AN UNDIVIDED 1/8 INT. OF THE COAL.



LEGEND

- 0% RECOVERY
- 40% RECOVERY
- 50% RECOVERY

COAL  
WESTMORELAND MINING COMPANY  
J.C. AND G.W. SPEER

SURFACE  
MUNICIPAL AUTHORITY OF WESTMORELAND COUNTY  
C.M. SPEER HEIRS  
102.72 ACS.

MAP  
SHOWING COAL LANDS  
OF  
WESTMORELAND MINING COMPANY  
AFFECTED BY  
BEAVER RUN RESERVOIR  
MUNICIPAL AUTHORITY OF WESTMORELAND COUNTY  
SCALE: 1" = 200'  
FEBRUARY 1957  
EAVENSON, AUCHMUTY & SUMMERS  
MINING ENGINEERS  
KOPPERS BUILDING  
PITTSBURGH, PA.