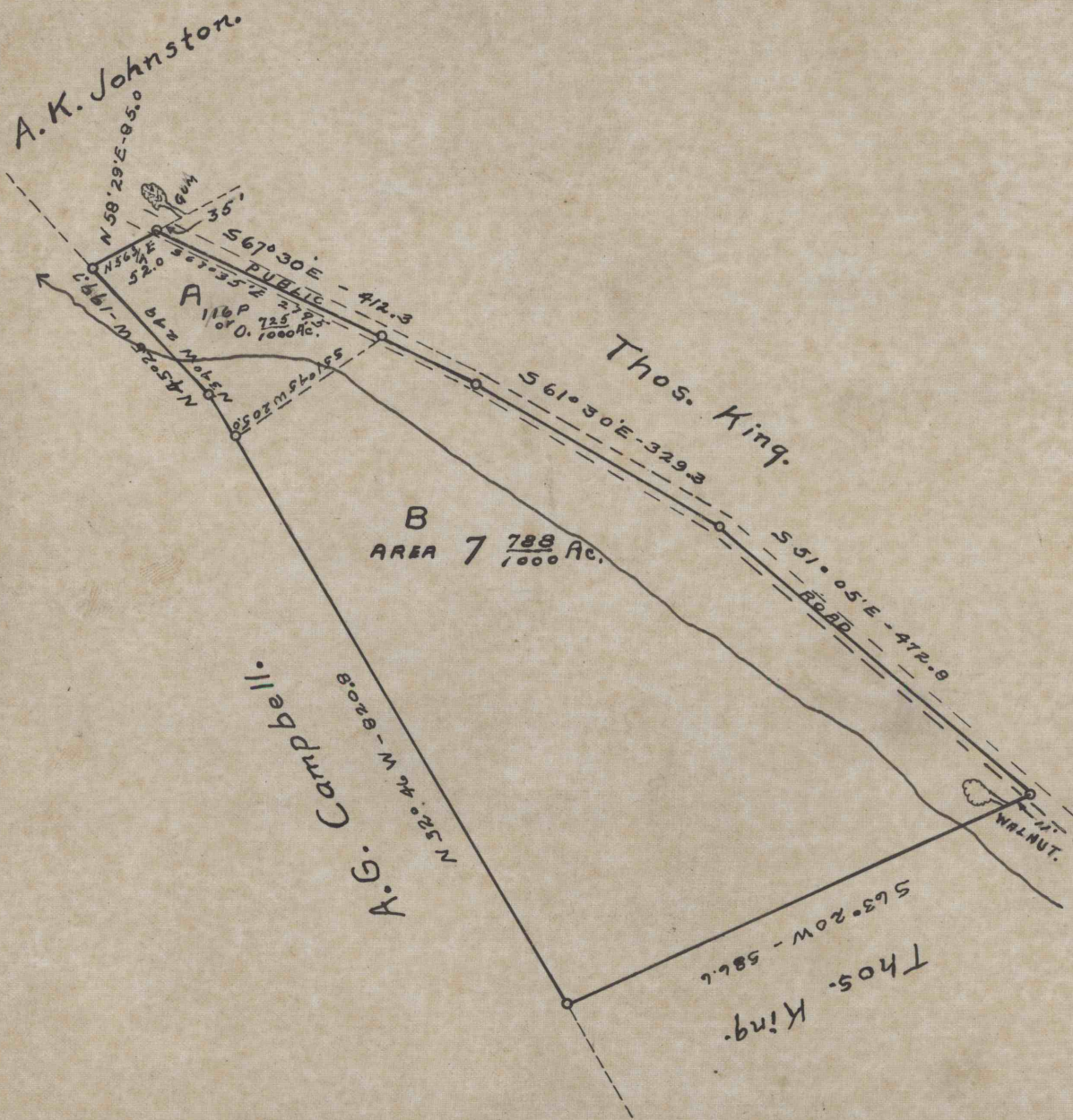


NOTE:—

FOR TRACT A SEE DEED JAN. 27, 1891

W.S. KERR TO A.G. CAMPBELL RECORDED D.B. 225P471



THOS. KING TO A. G. CAMPBELL

LANDS SITUATED IN

LOYALHANNA TOWNSHIP WESTMORELAND CO. PA.

SCALE 1" = 200 FT

JUNE 10, 1915

ALBERT SMITH C.E.  
SALTSBURG PA.

TRACT A	0.725 Ac.
CONTAINING TRACT B	<u>7.788 Ac.</u>
TOTAL	8.513 Ac.

L.H. 3018 A

4326