



PROPOSED DEEP MINE OPERATION RLANE ARNOLD COAL COMPANY

PROPERTY OF

RALPH L. NEWMAN, ET. UX.

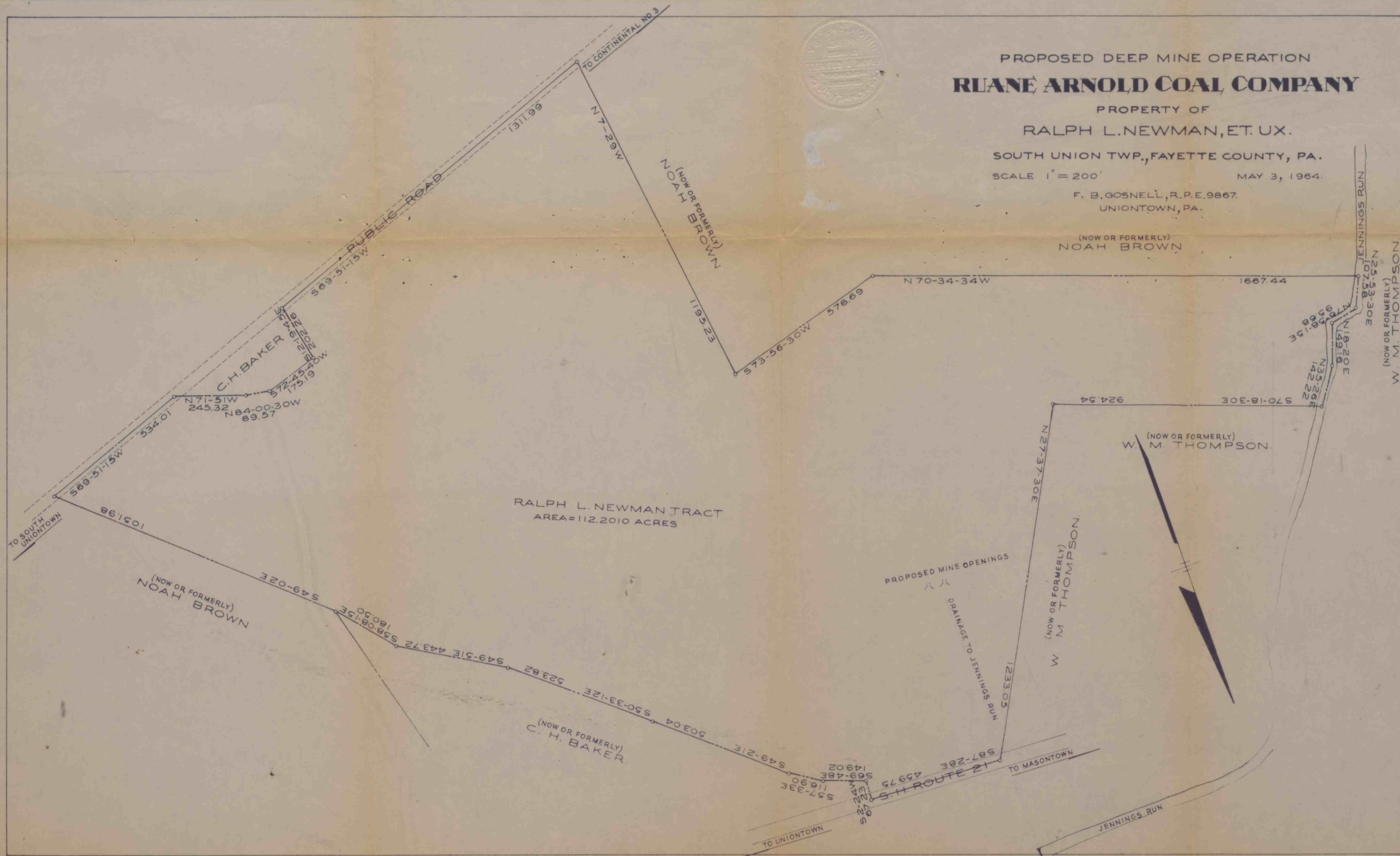
SOUTH UNION TWP., FAYETTE COUNTY, PA.

SCALE 1" = 200'

MAY 3, 1964.

F. B. GOSNELL, R.P.E. 9867.
UNIONTOWN, PA.

(NOW OR FORMERLY)
NOAH BROWN



RALPH L. NEWMAN TRACT
AREA = 112.2010 ACRES

PROPOSED MINE OPENINGS

DRAINAGE TO JENNINGS RUN

(NOW OR FORMERLY)
W. M. THOMPSON

(NOW OR FORMERLY)
W. M. THOMPSON

(NOW OR FORMERLY)
C. H. BAKER

(NOW OR FORMERLY)
NOAH BROWN

(NOW OR FORMERLY)
W. M. THOMPSON

TO SOUTH
UNIONTOWN

TO CONTINENTAL No. 3

TO UNIONTOWN

TO MASONTOWN

JENNINGS RUN

JENNINGS RUN