

3888
 John Olden
 Wt. July 17, 1793
 S. Oct. 23, 1794
 1100 As.

3889
~~3888~~
 John Olden
 Wt. July 17, 1793
 S. Oct. 23, 1794
 1100 As.

3890
 Olden

3887
 John Olden
 Wt. July 17, 1793
 S. Oct. 23, 1794
 1095 1/2 As.
 A-12-174

3886
 John Olden
 Wt. July 17, 1793
 S. Oct. 23, 1794
 1036 As.
 A-37-151

Henry John Betjeman
 Wt. May 5, 1840
 S. July 10, 1840
 730 As. 132 P.
 A-37-144

Samuel Bryon
 Wt. May 17, 1785
 S. Oct. 12, 1787
 A-98-341

Samuel Welch
 Wt. Apr. 28, 1831
 S. Aug. 20, 1831
 347 As. 138 P.
 A-81-256

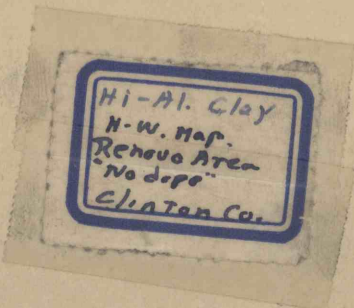
1047
 Wm. Lloyd
 Wt. Apr. 5, 1782
 S. May 30, 1793
 1100 As.
 A-80-96

1046
 Wm. Lloyd
 Wt. Apr. 5, 1792
 S. May 30, 1793
 1100 As.
 A-88-314

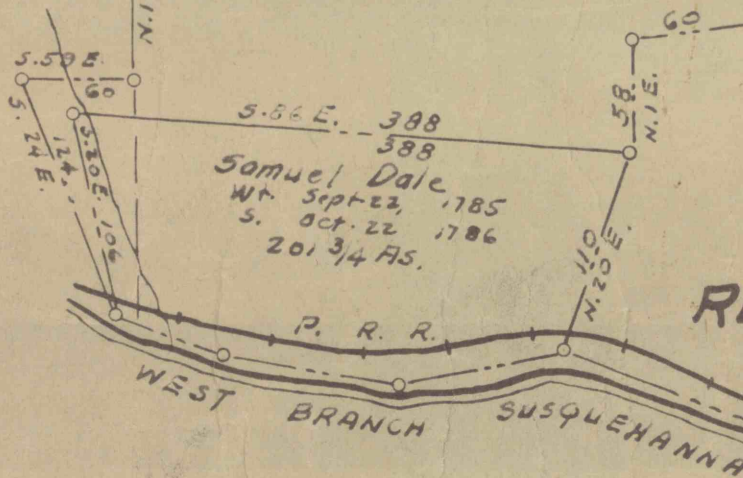
#554
 6-25-99
 C.C.

Scale: 1 inch = 100 rods = 1650 feet.

D.D.H. 5001-03
 5005-06
 P.H. 1-6



File with MAP
 Clinton Co F-13



RENOVO

G.M.L.