

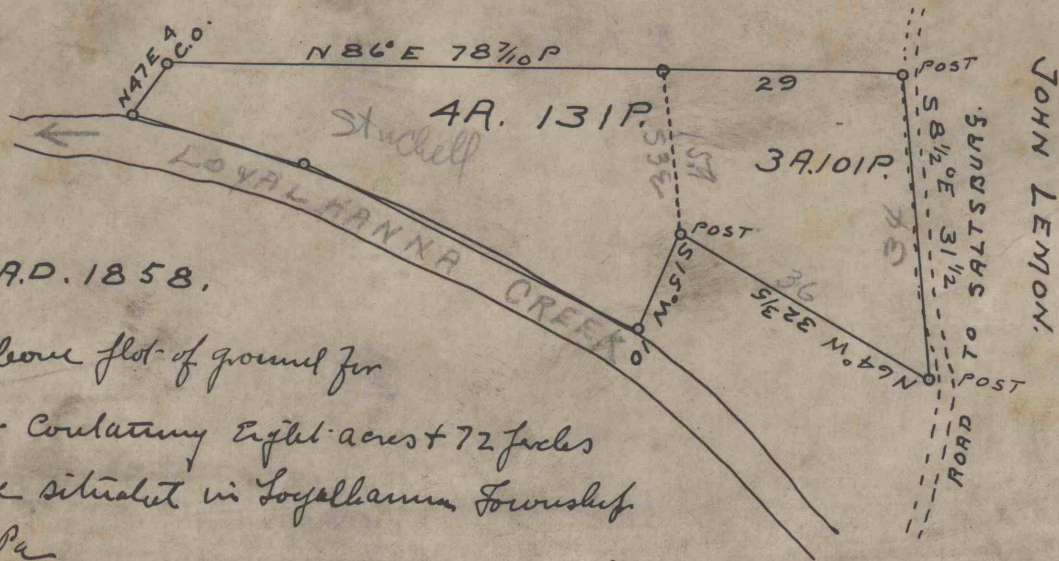
WM. LEMON

495. 131P

3" 101

8" 72P

STRICT MEASURE



SEPT. 4<sup>th</sup> A.D. 1858.

Surveyed the above plot of ground for  
 W. Peter Stouffer containing Eight acres + 72 poles  
 strict measure situated in Loyalhanna Township  
 West-mid. Co. Pa

April 10<sup>th</sup> 1858 Vanaloni 1° west  
 of Meridian

Wm<sup>c</sup> Cutler  
 J

5627  
 L. H. 2671-5-7