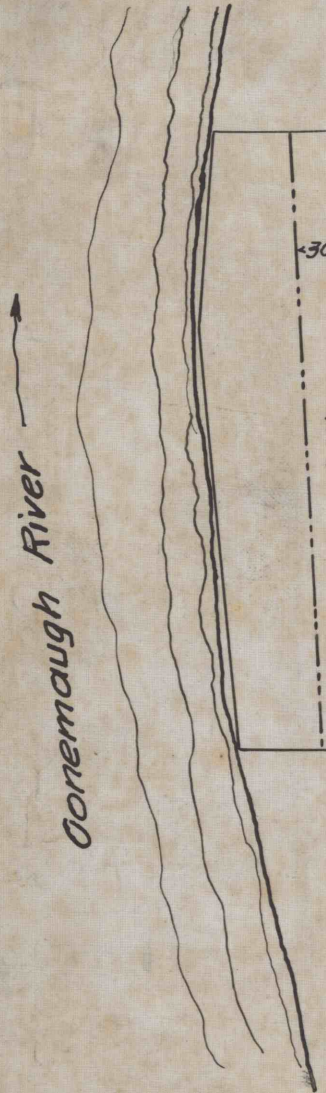


Blairsville Land Improvement Co.

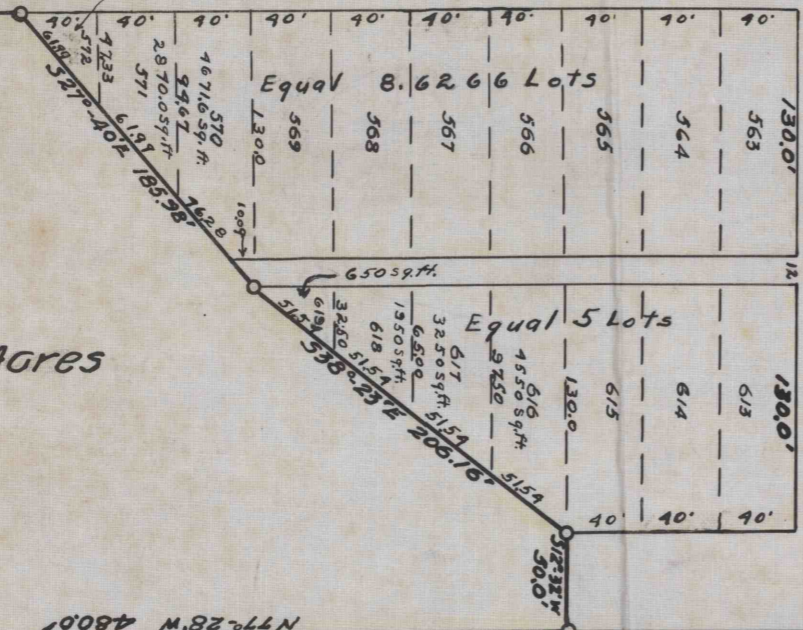


P.R.R. Right of Way
N10°24'E 322.25'

577°-28 E 212.0'

2.64 Acres

Columbia Plate Glass Co.



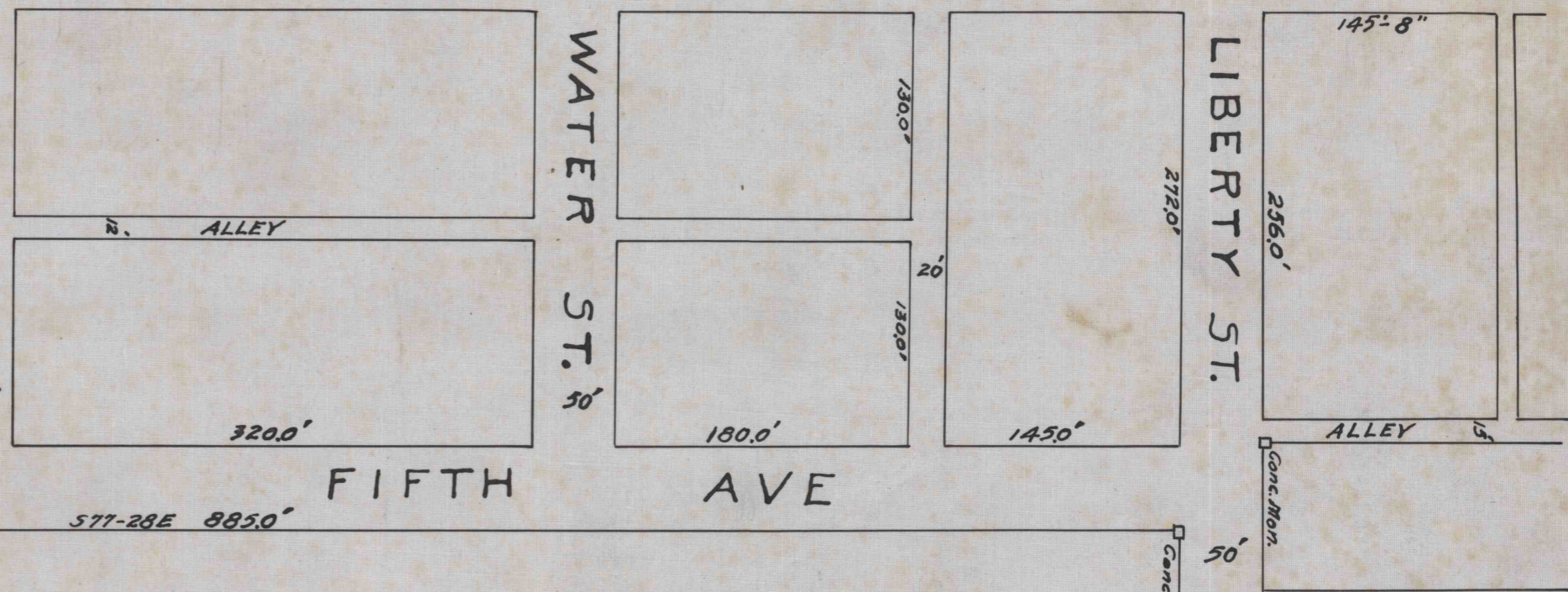
OAK ST. 50'

FOURTH AVE

WATER ST. 50'

LIBERTY ST.

FIFTH AVE



BLAIRSVILLE LAND IMPROVEMENT CO.
 LANDS SOLD TO
 COLUMBIA PLATE GLASS CO.
 Scale - 1" = 100'
 Albert Smith, C.E., Saltsburg, Pa.
 May 8, 1920

Blairsville 5507