

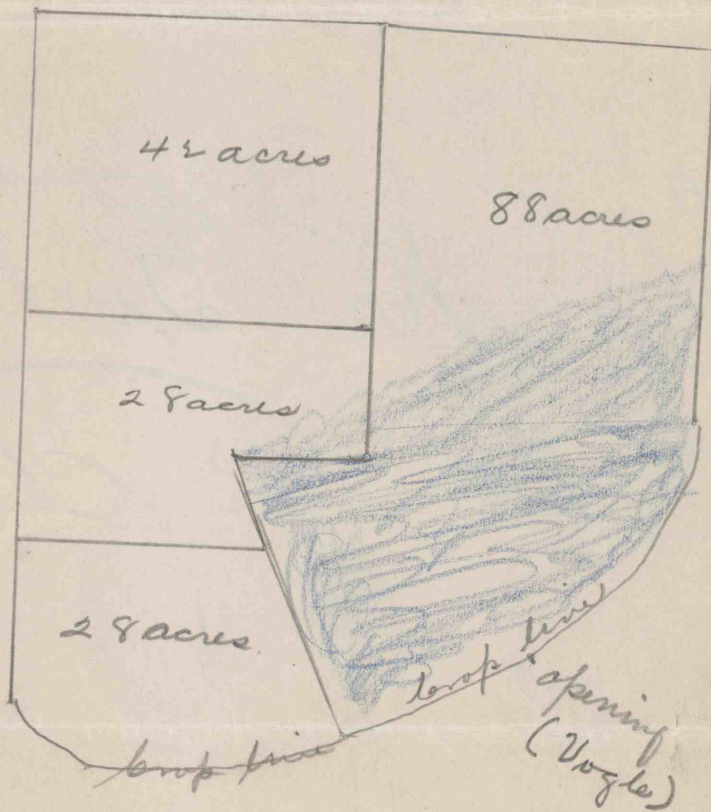
# CHERRY RUN FUEL COMPANY

FIRST NATIONAL BANK BUILDING

RIMERSBURG, PA.

Toby Township, Clarion Co., Pa.

Lower Kittanny Seam  
only - 3' 0" high  
owned in fee.



Scale 825' = 1 inch.

Madison Twp. Clarion Co Pa.

1.8 acres Lower Kittanny Seam, owned in fee; height probably 3' 6", have no map.

