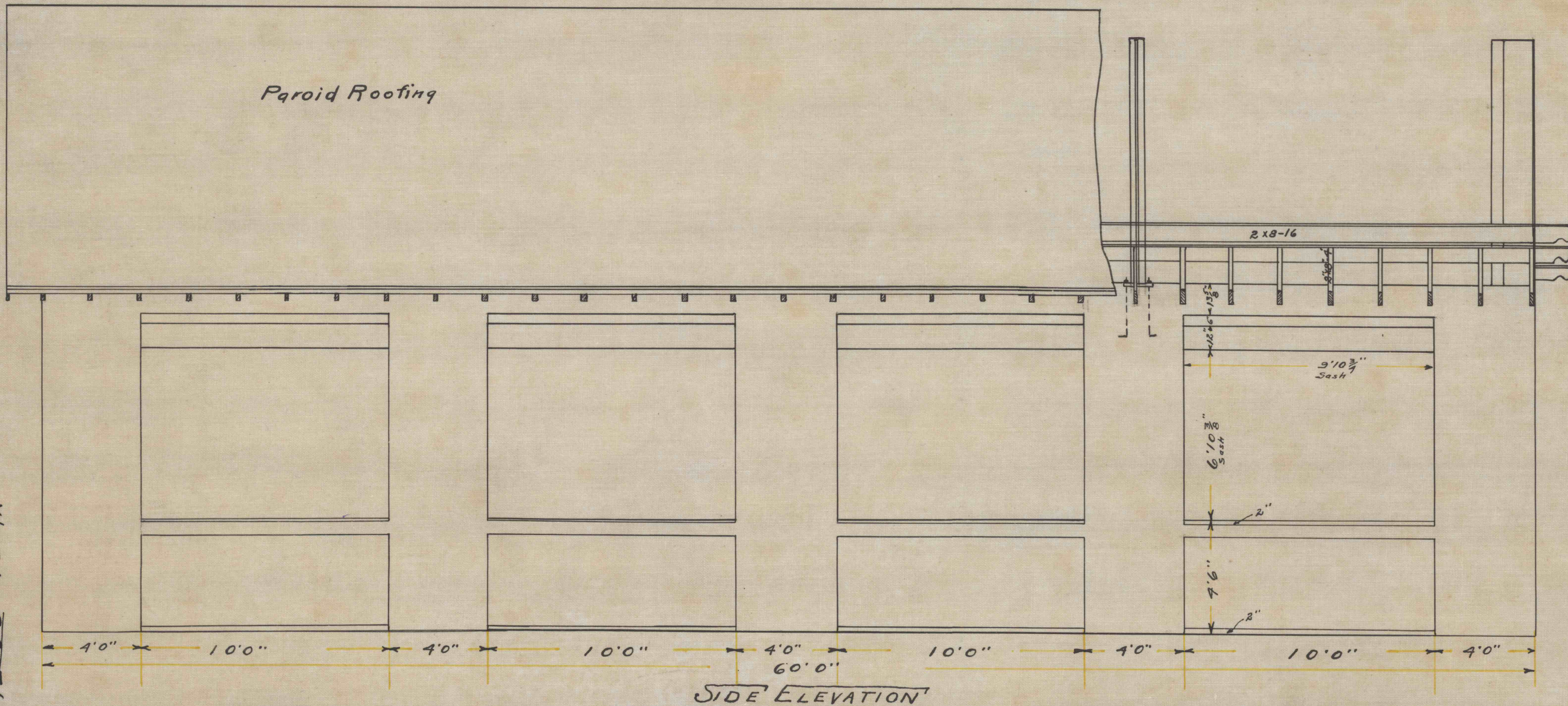


LUMBER

98 pcs 2x8 16 purlins-rafters-splices	2091 ft.B.M.
60 pcs 2x8-19 purlins	1120 " "
20 pcs 2x6-12 plate	240 " "
"sheeting	3300 " "
20 pcs 1x4-12	80 " "
20 pcs 1x10-12	200 " "
Total	7031 " "
32 Sq. Paroid Roofing	



SIDE ELEVATION

5222/2
West - 2409/2

West - 2409/2
5222/2