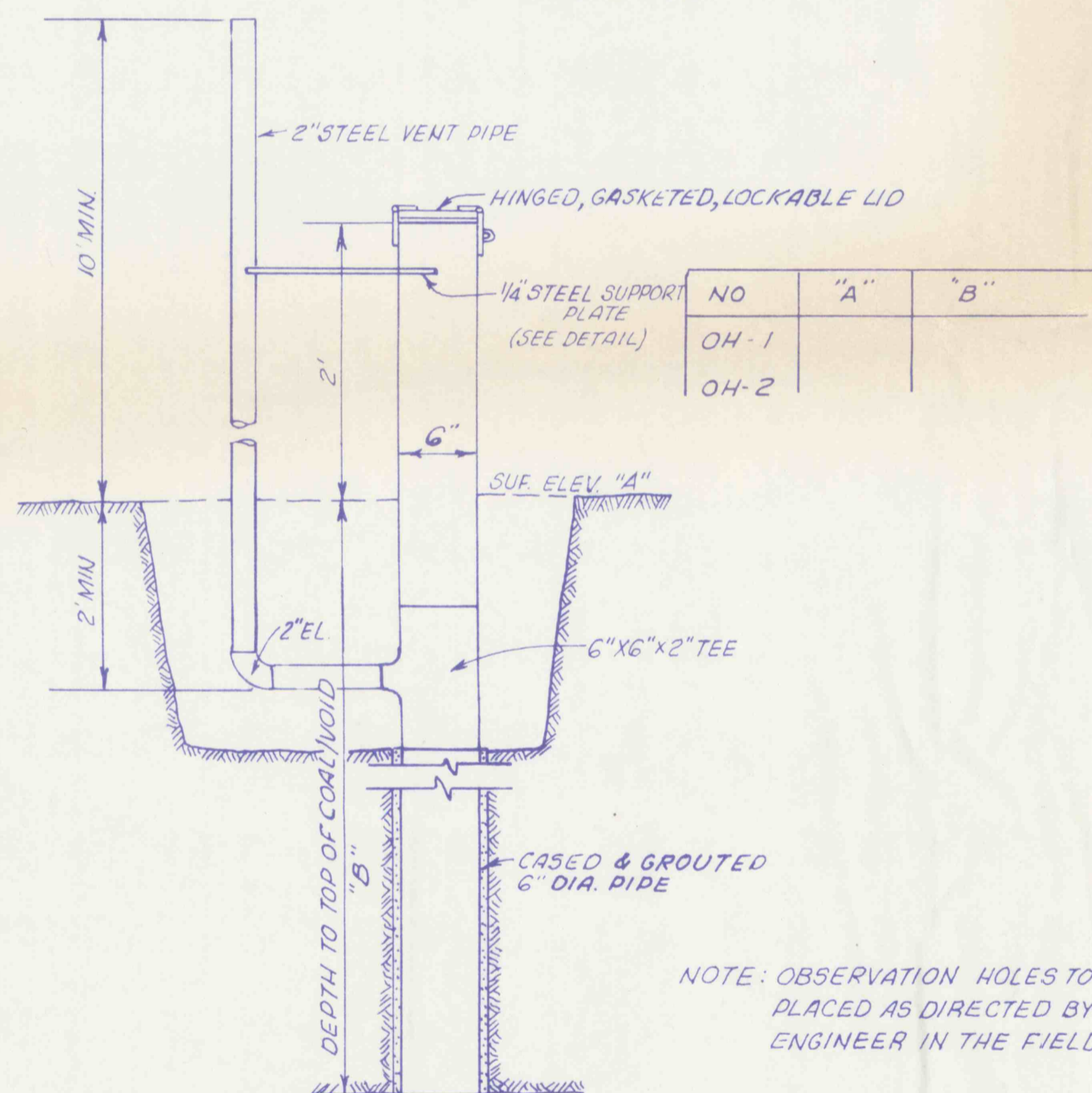


	"A"	"B"	"C"
OB-1	1642	130'	1640
OB-2	1502	89'	1500
OB-3	1422	26'	1420
OB-1A	1652	140'	1650
OB-2A	1512	52'	1510
OB-3A	1457	69'	1455

MINE VOID

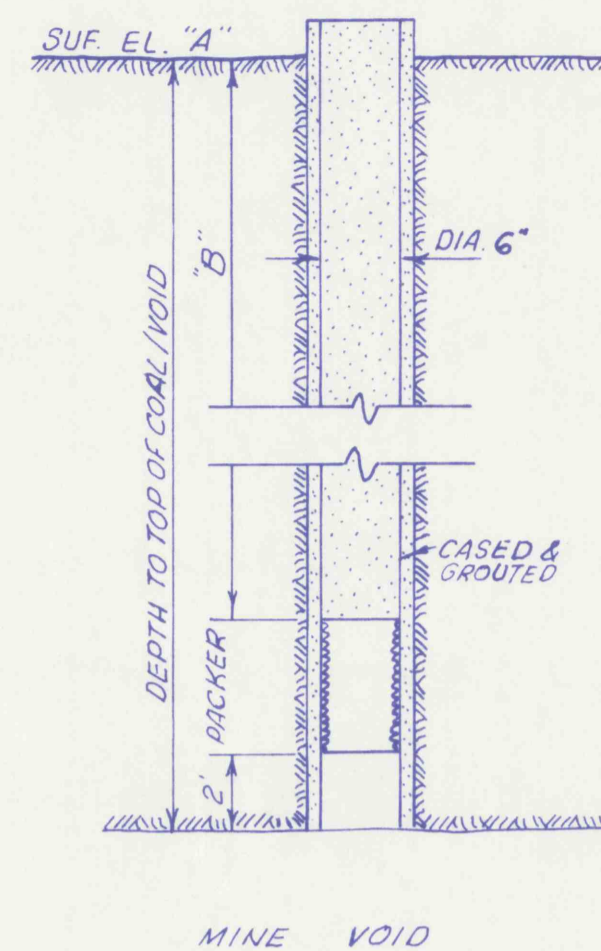
TYPICAL OVERFLOW BOREHOLE DETAIL
NO SCALE



MINE VOID

OBSERVATION HOLE DETAIL
NO SCALE

NOTE: OBSERVATION HOLES TO BE PLACED AS DIRECTED BY THE ENGINEER IN THE FIELD

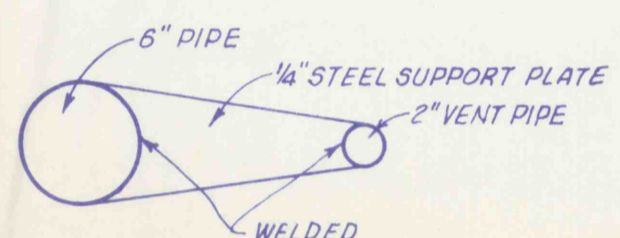


MINE VOID

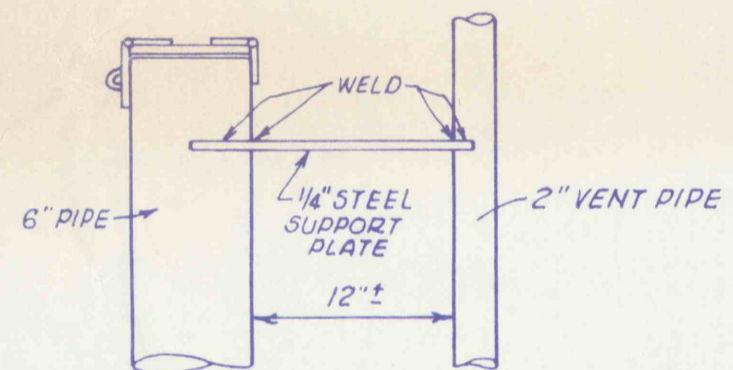
TYPICAL BOREHOLE SEALING DETAIL
NO SCALE

NO.	"A"	"B"
BH 1*	1825	95'
BH 2	1675	187'
BH 3	1642	192'
BH 4	1545	45'
BH 5	1747	230'
BH 6	1670	146'
BH 7	1714	242'
BH 8	1530	175'
BH 9*	1625	293'
BH 10	1695	403'
BH 11*	1691	401'
BH 12*	1525	378'
BH 13	1752	225'
BH 14	1624	194'
BH 15	1633	193'
BH 16	1585	310'
BH 17	1585	310'
BH 18	1585	310'
BH 19	1612	445'
BH 20	1612	445'
BH 21	1600	470'
BH 22	1595	470'
BH 23	1400	315'
BH 24	1480	328'
BH 25	1700	175'

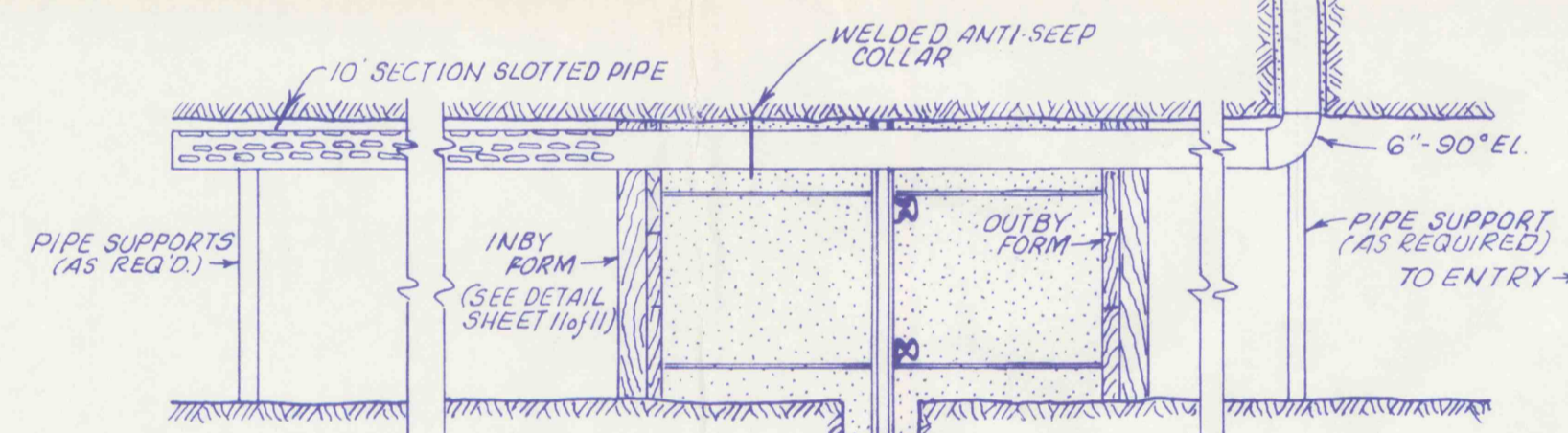
*PRIOR SEALED HOLES



PLAN

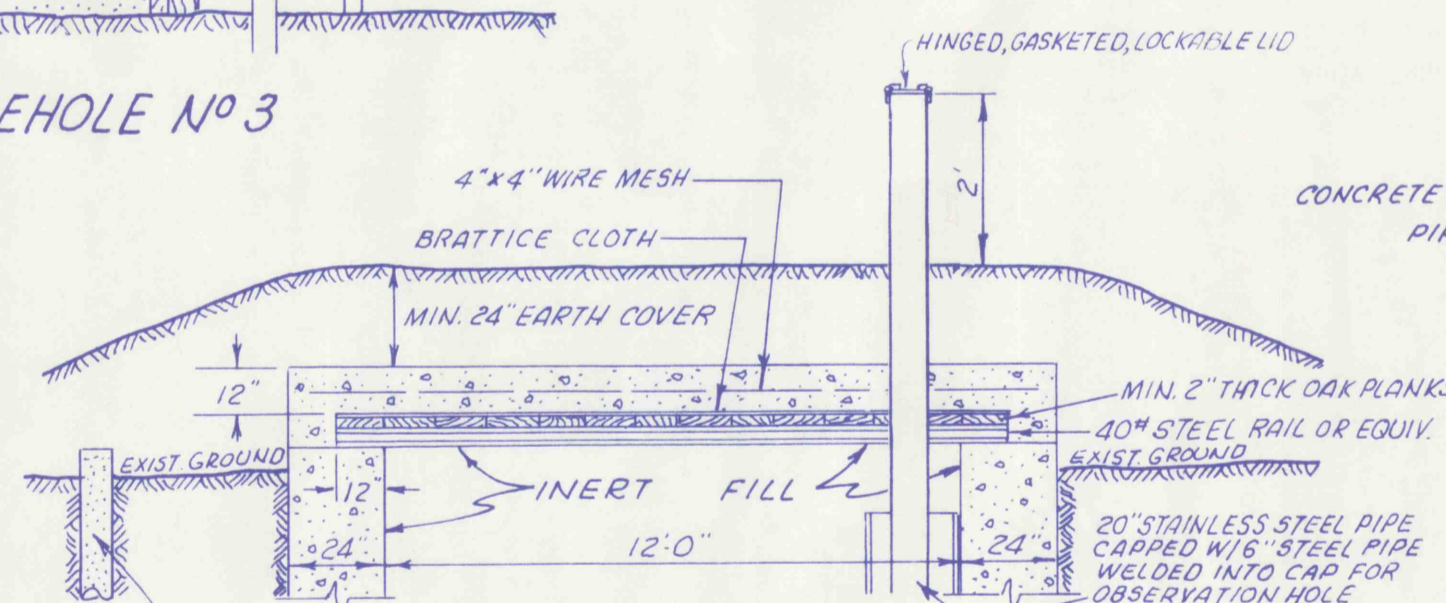


SECTION
DETAIL OF 1/4" STEEL
SUPPORT PLATE
NO SCALE

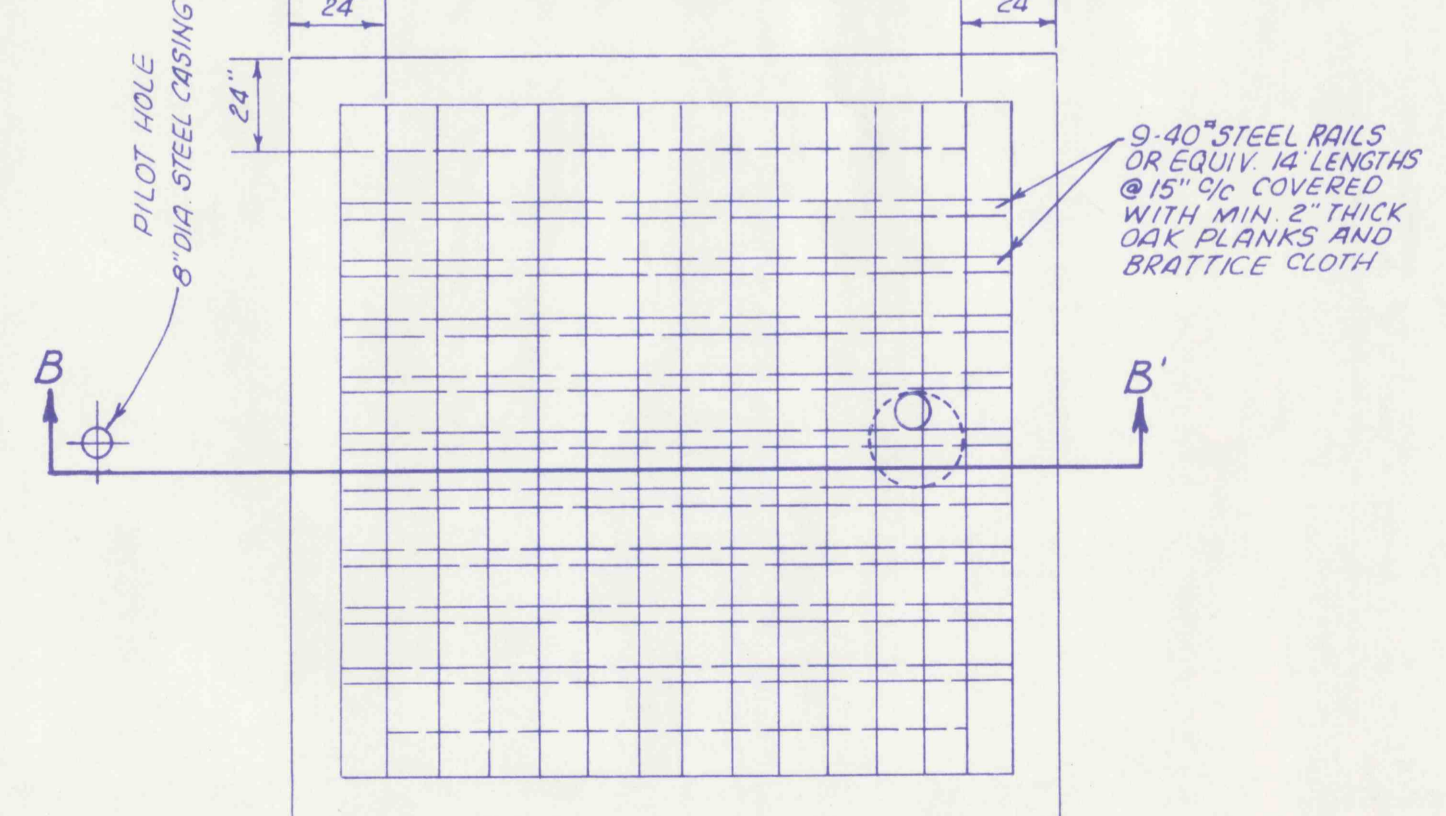


DETAIL OF OVERFLOW BOREHOLE NO 3

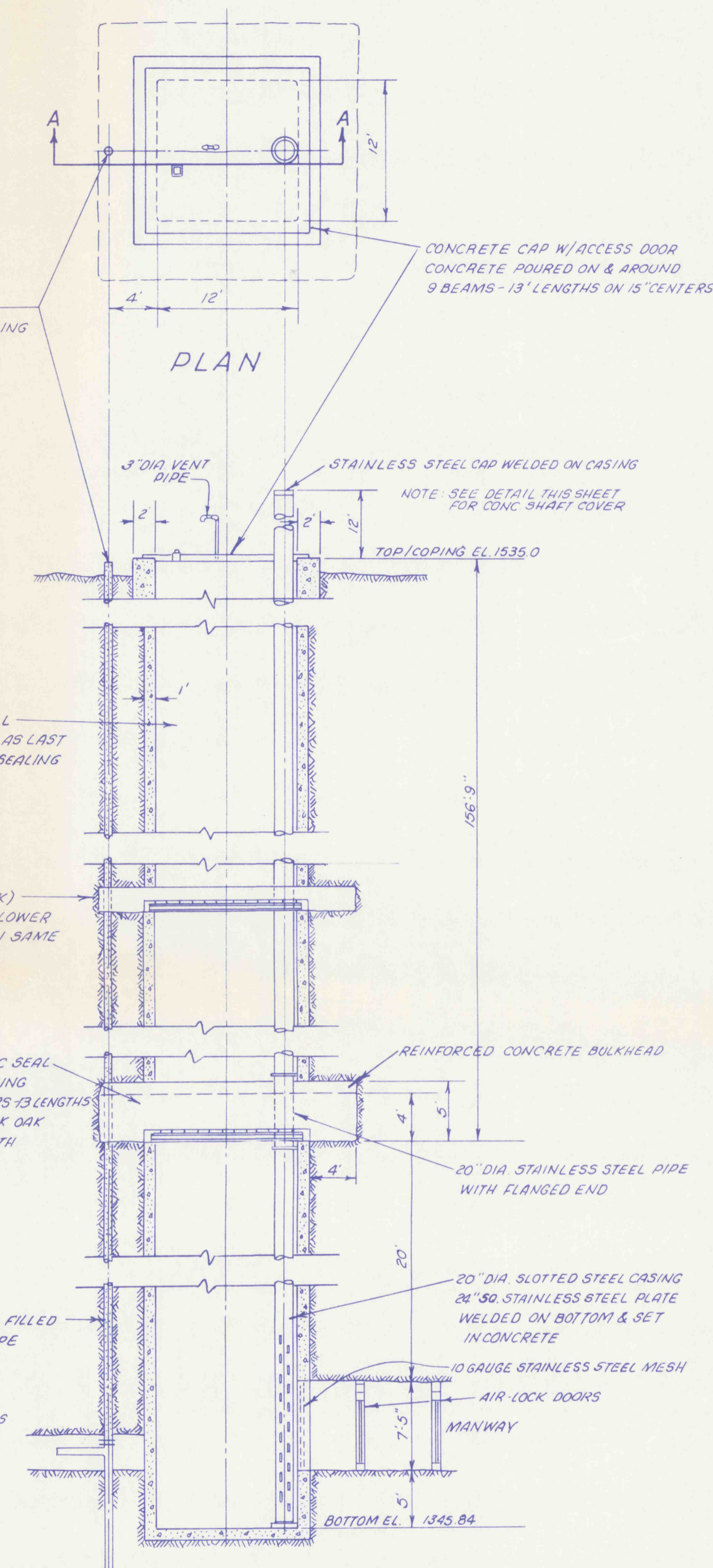
NO SCALE



SECTION B-B'



PLAN OF CONC SHAFT COVER
NO SCALE



SECTION A-A
PORTAL SHAFT 2ND NORTH HEADING
NO SCALE

MINE CLOSURE PLAN
FOR
LADY JANE COLLIERIES, INC.
CLOSURE DETAILS
HUSTON TWP, CLEARFIELD CO, PA.

SCALE AS SHOWN
GWIN, DOBSON & FOREMAN, INC.
CONSULTING ENGINEERS
ALTOONA, PENNSYLVANIA

SHEET NO.
9 of 12

PR 9878-278