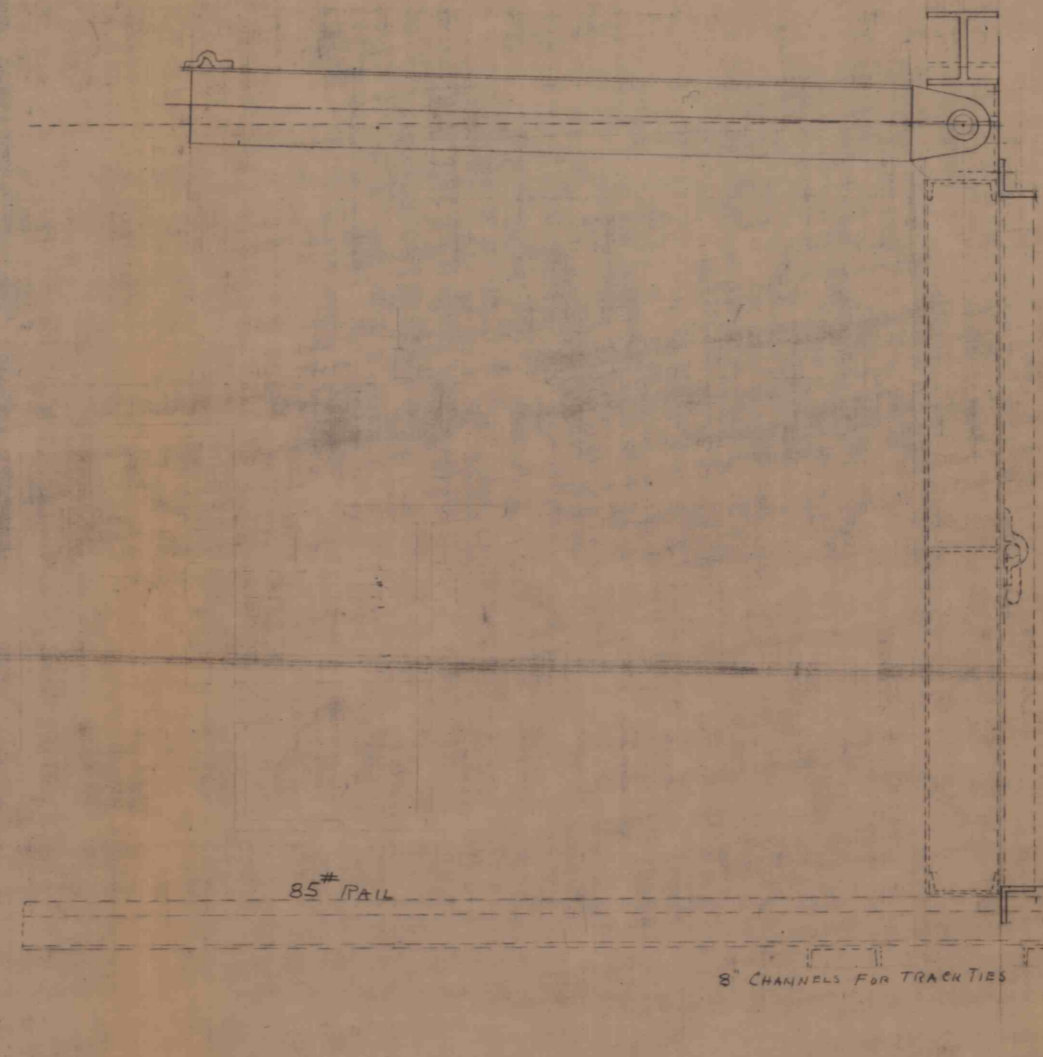
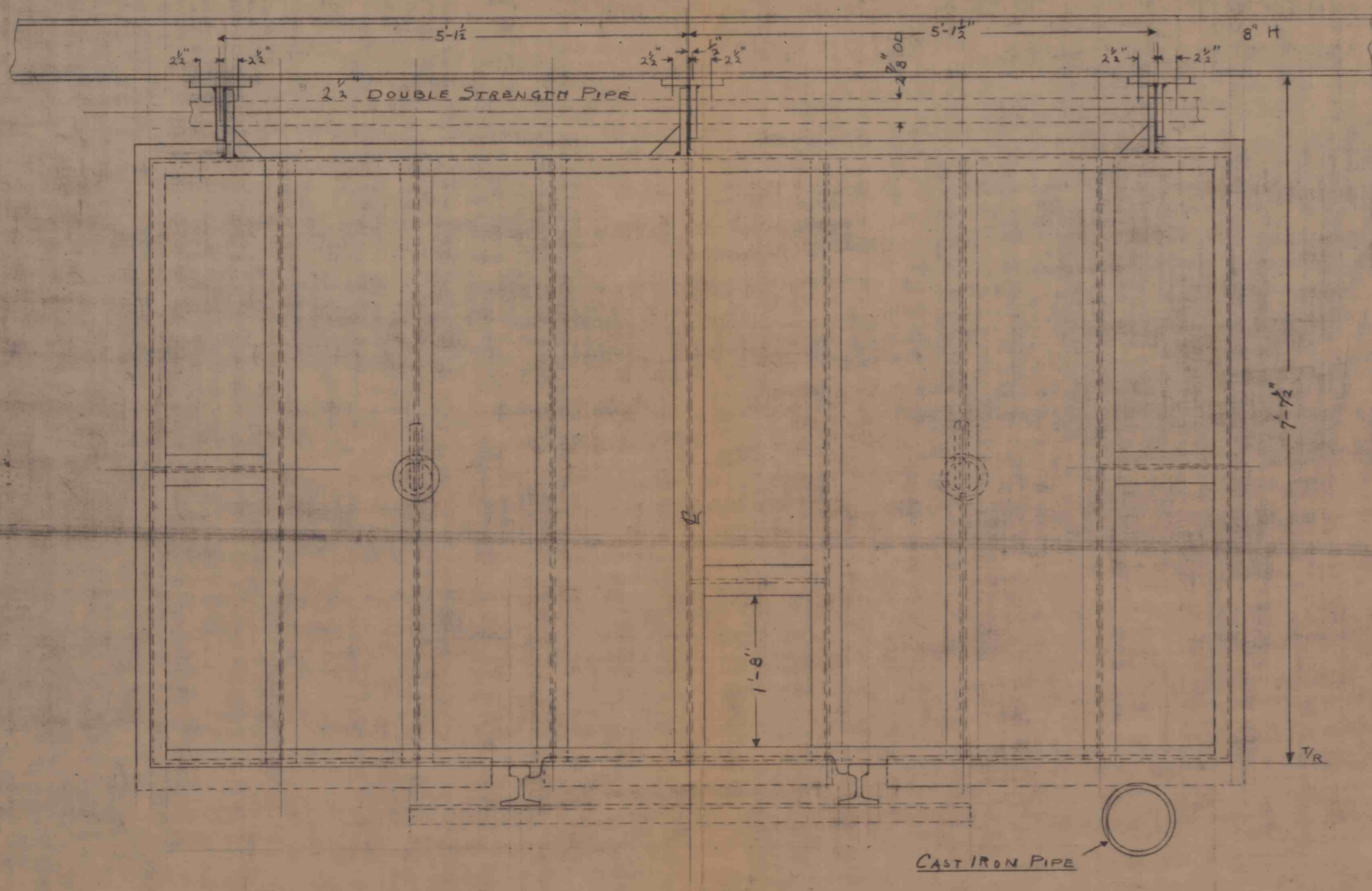


DOOR SUSPENSION WITH 8" H BEAM OVERHEAD



REV. CHANGE TO OVERHEAD 8" H FOR DOOR SUSPENSION

NO.	NO. REV.	MARK	MATERIAL	DESCRIPTION	REMARKS	EST. WGT.
BILL OF MATERIAL						
REFERENCE DRAWING: EST. Wt. DOOR 3114						
" FRAME 650						
4 ROOF BEAMS (8" Hx 1391)						
" (6" Ix)						

THIS DRAWING IS LOANED WITH THE EXPRESSED AGREEMENT THAT THE DRAWING AND INFORMATION THEREIN CONTAINED ARE THE PROPERTY OF REPUBLIC STEEL CORPORATION AND WILL NOT BE REPRODUCED, COPIED, OR OTHERWISE DISPOSED OF, DIRECTLY OR INDIRECTLY, AND WILL NOT BE USED IN WHOLE OR IN PART TO ASSIST IN MAKING OR TO FURNISH ANY INFORMATION FOR THE MAKING OF DRAWINGS, PRINTS OR OTHER REPRODUCTIONS HEREOF, OR FOR THE MAKING OF APPARATUS OR PARTS THEREOF, EXCEPT UPON WRITTEN PERMISSION OF REPUBLIC STEEL CORPORATION FIRST OBTAINED AND SPECIFIC AS TO EACH CASE. THE ACCEPTANCE OF THIS DRAWING WILL BE CONSTRUED AS AN ACCEPTANCE OF THE FOREGOING AGREEMENT.

NO.	DATE	BY
1	11-25-52	CRW
2		
3		
4		
5		
6		
7		
8		
9		
10		

REPUBLIC STEEL CORPORATION
NORTHERN DISTRICT COAL MINES
BANNING NO. 3 MINE
 DEPARTMENT: ENGINEERING
OVERHEAD SUSPENDED FLOOD GATE
 SCALE: 1" = 3'-0"
 DRAWN: CRW DATE: 10-2-52
 CHECKED: DATE: A-424-2
 SAFETY: DATE:
 APPROVED: DATE: