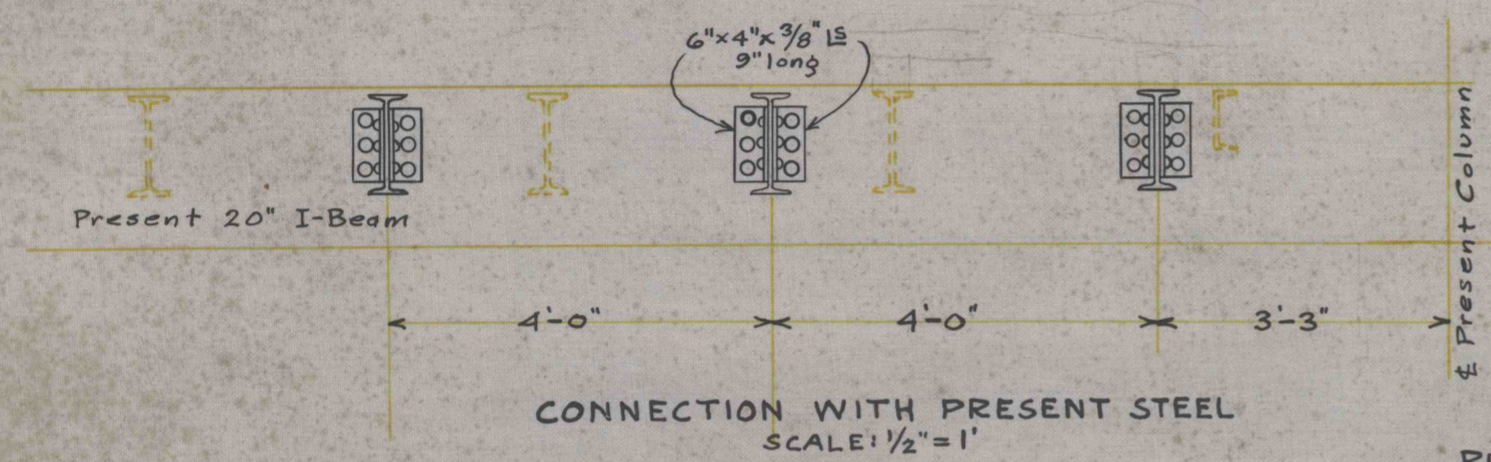
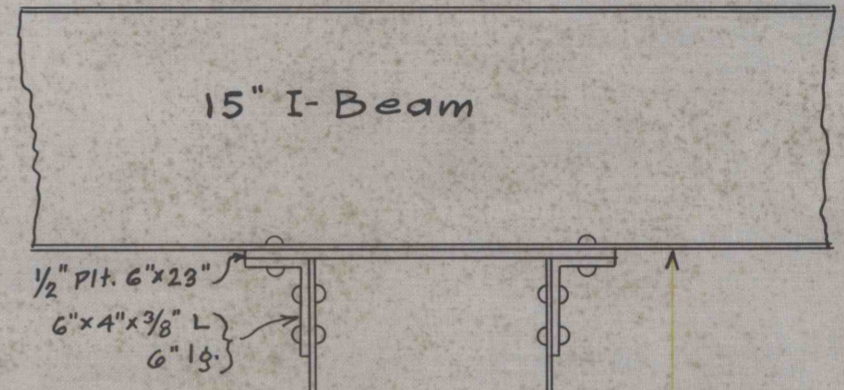
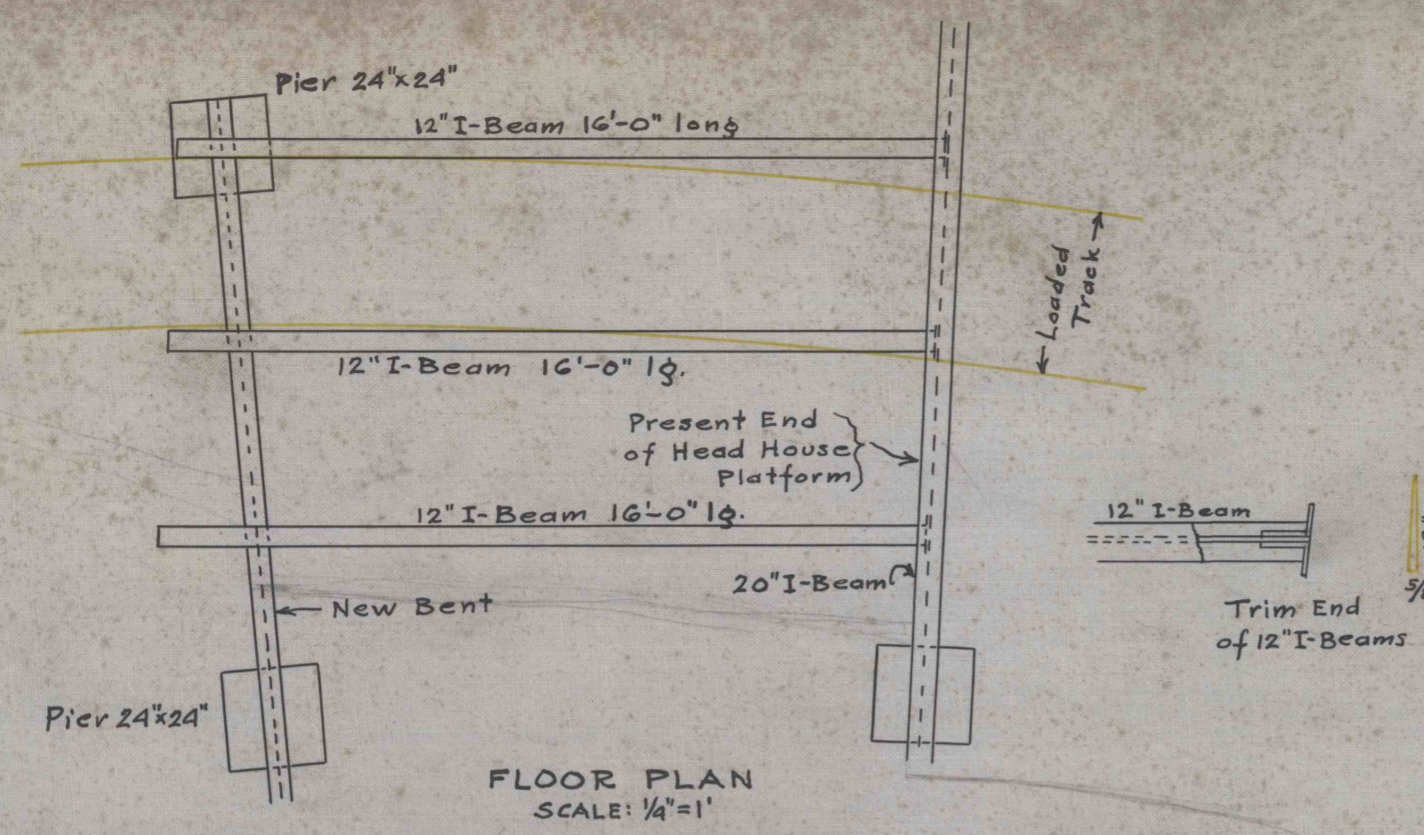
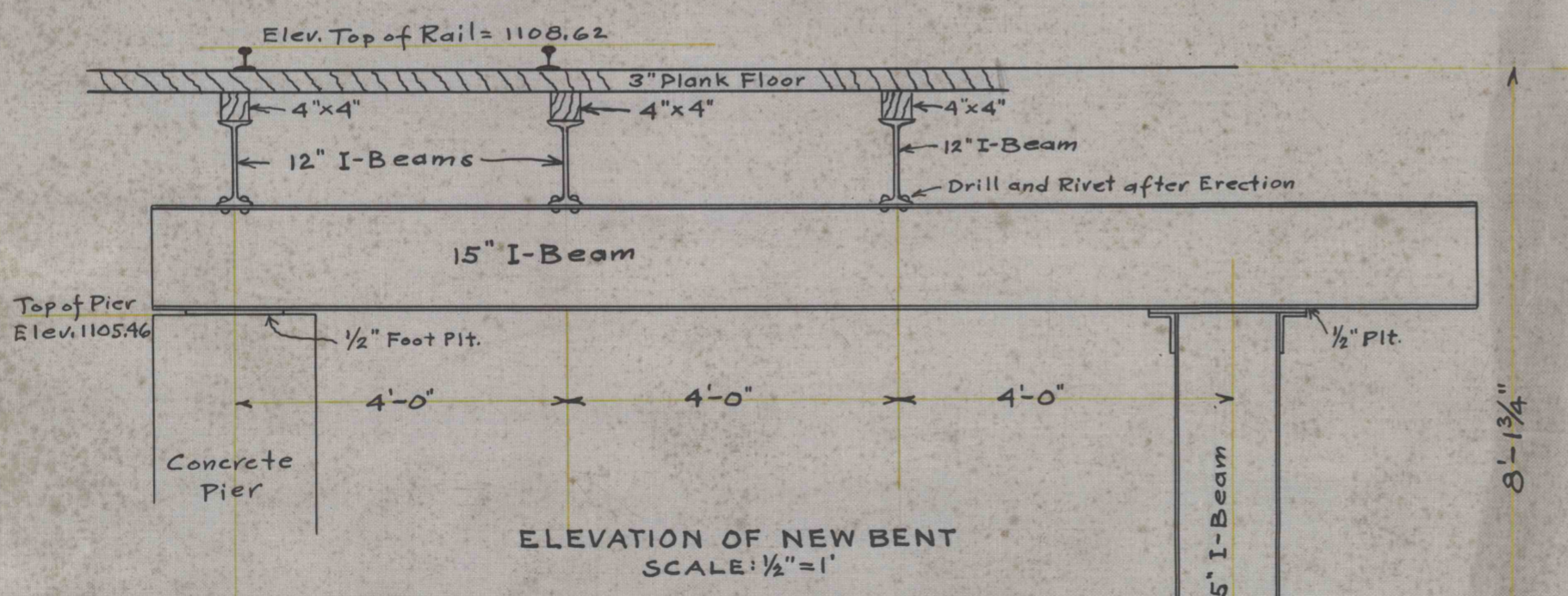
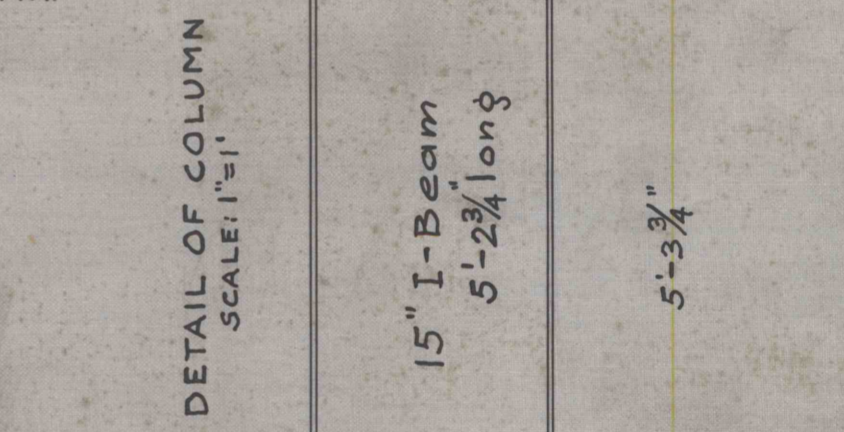


4606
RR 304A 4-7

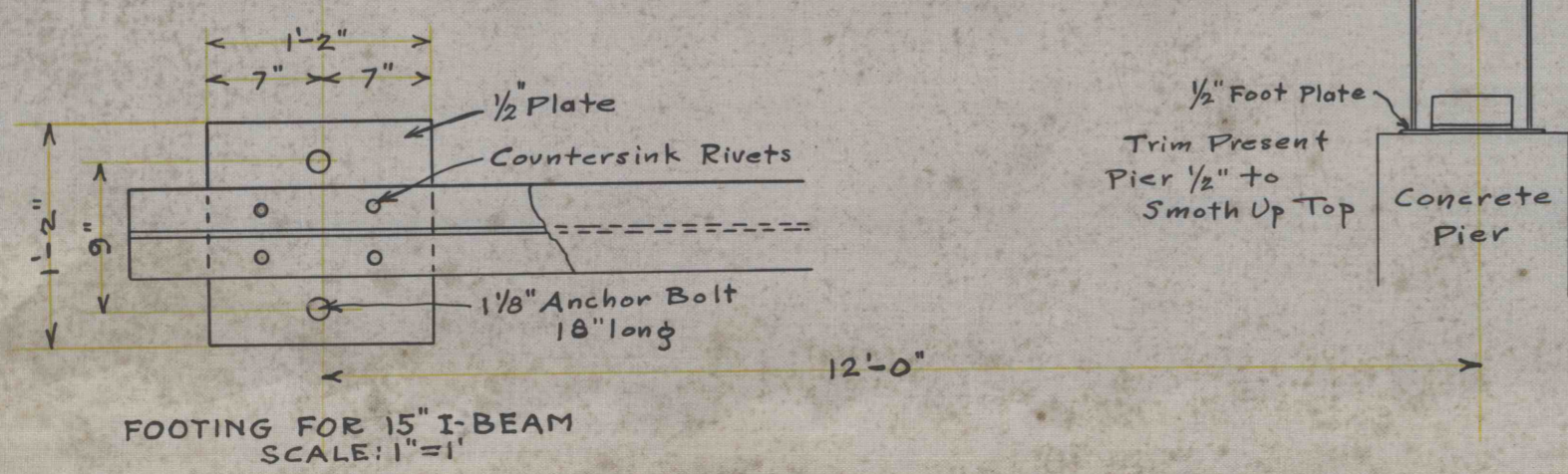
KISKIMINITAS COAL COMPANY
ROARING RUN OPERATION
EXTENSION TO HEAD HOUSE PLATFORM
SCALES AS SHOWN JUNE 25, 1923
ENGINEERING DEPT., BLAIRSVILLE, PENNA.



NOTE: ALL RIVETS 5/8" DIAM.
RIVET SPACING 3"



8'-13/4"



1/2" Foot Plate

Trim Present Pier 1/2" to Smooth Up Top

Concrete Pier

Elev. 1100.19

1/2" Allowed for Trimming Off

