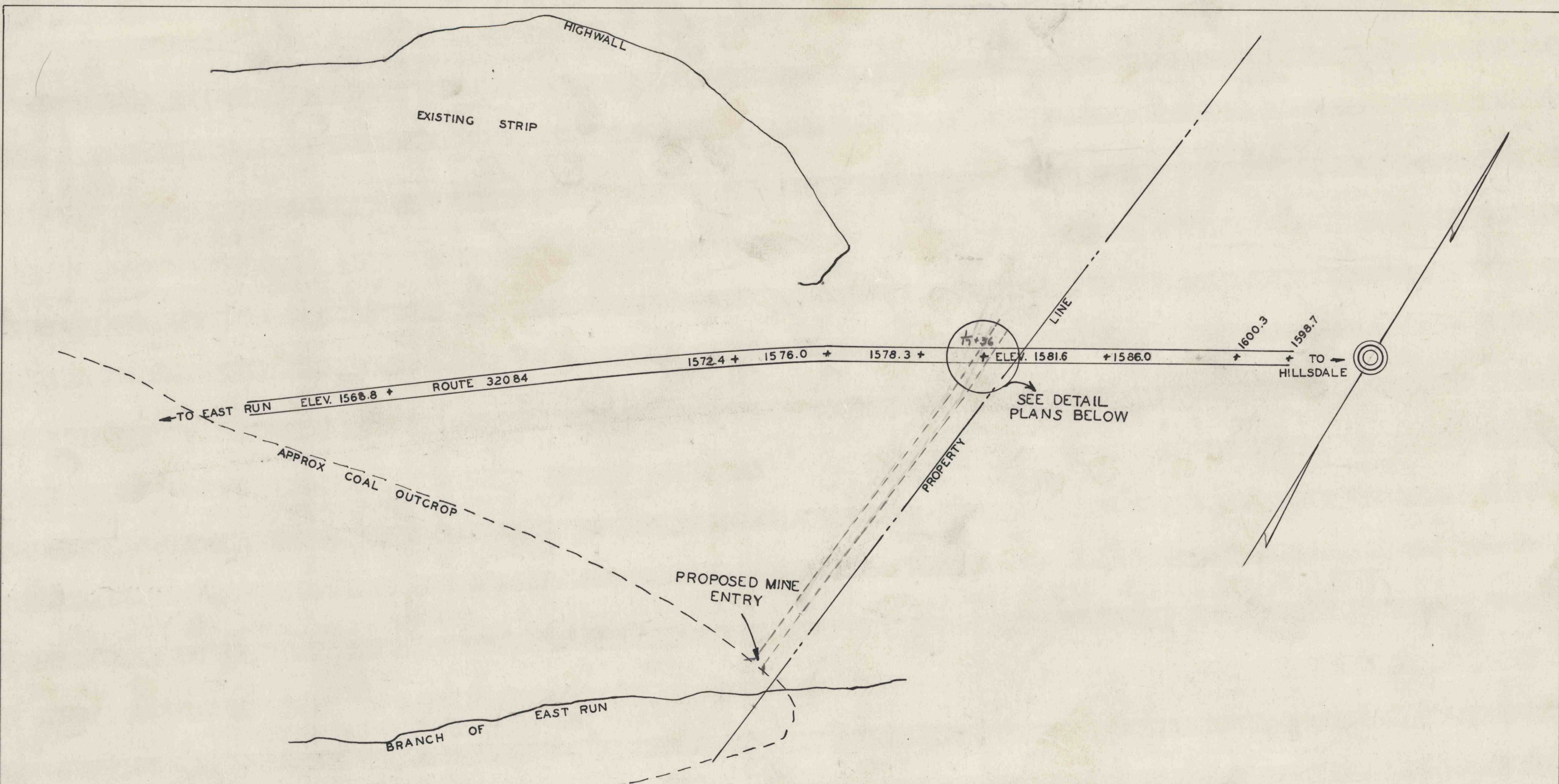


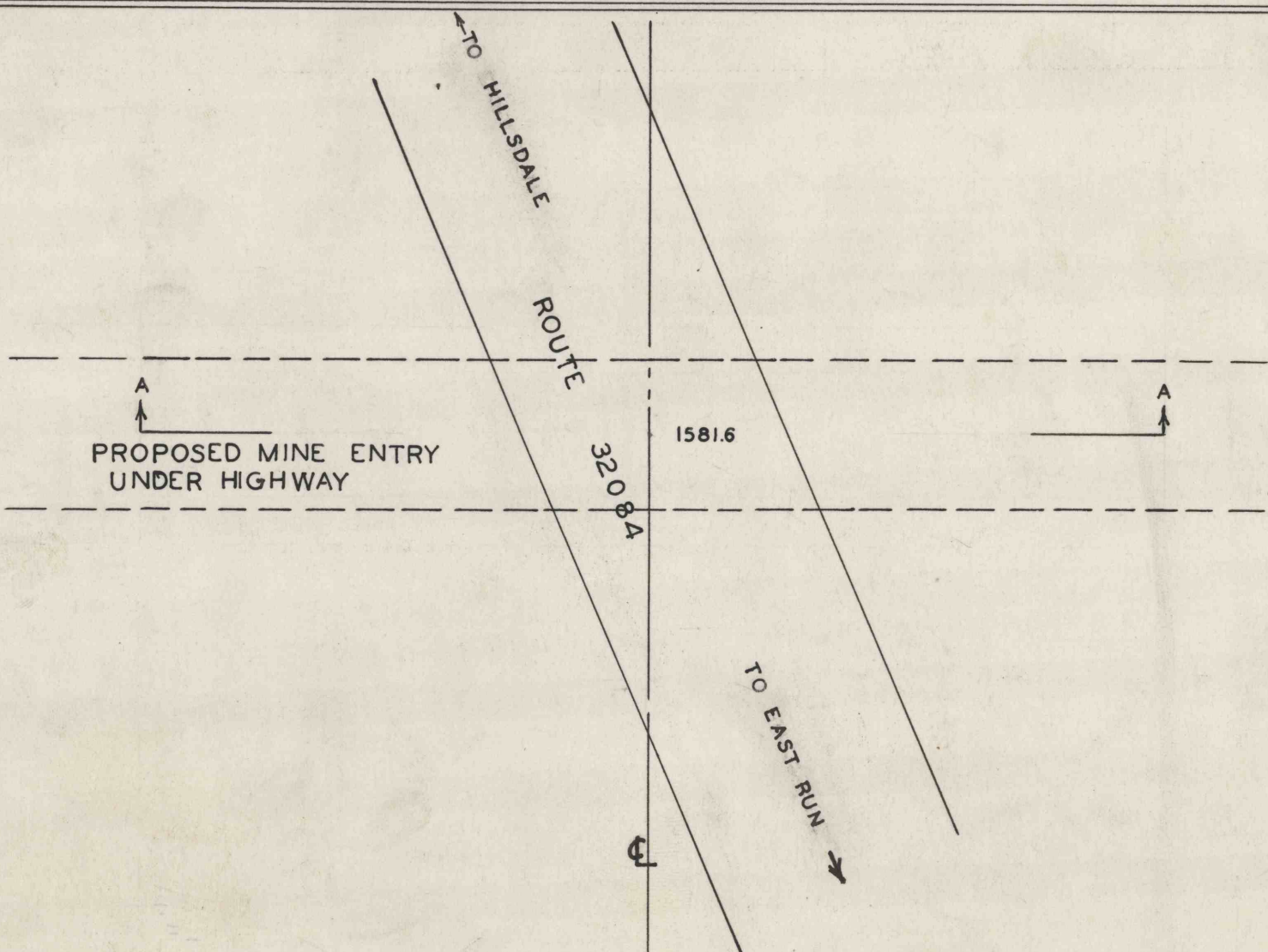
F.B. 2083



MAP SHOWING PROPOSED MINE ENTRY UNDER STATE HIGHWAY ROUTE 32084

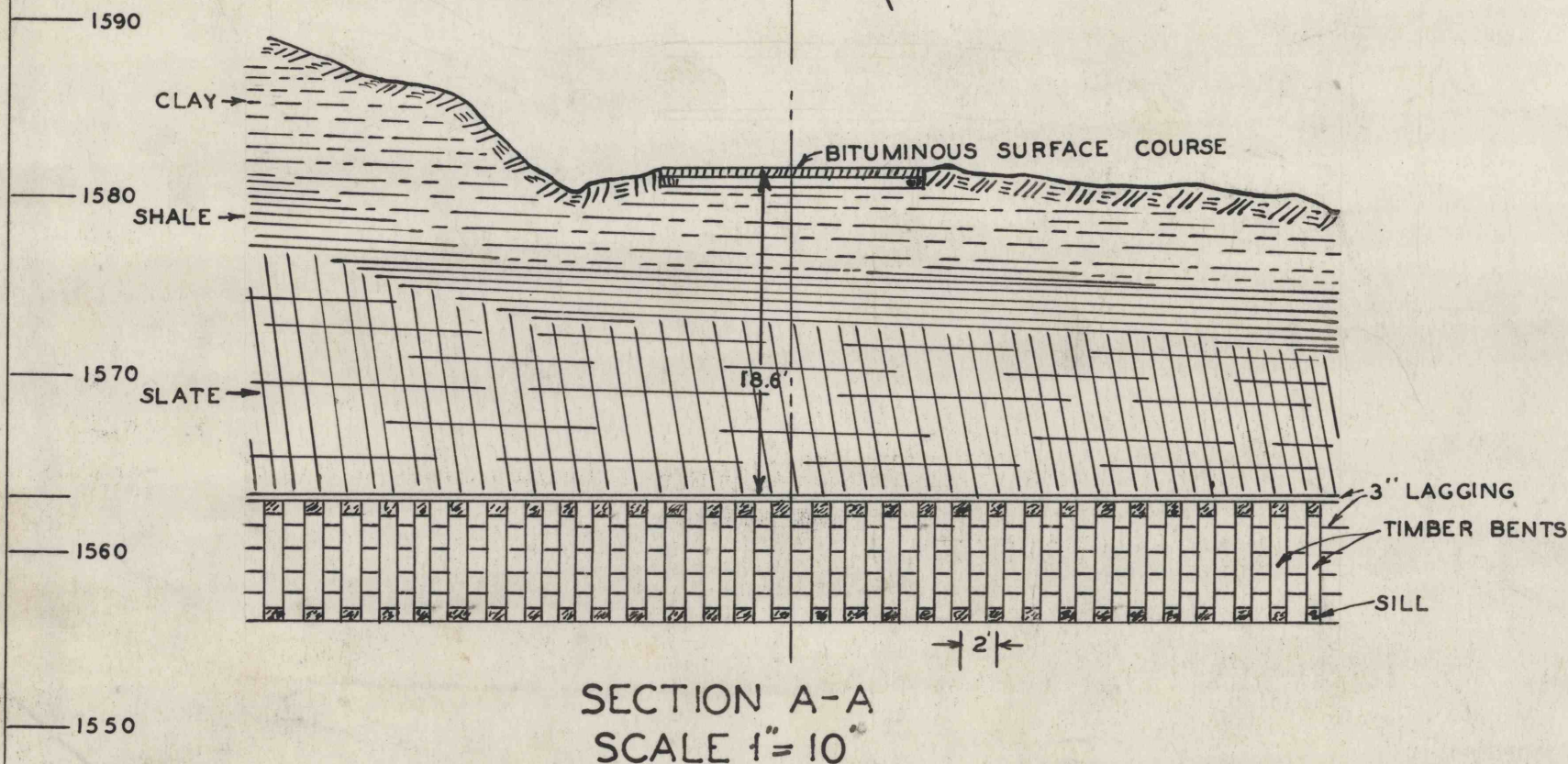
SCALE 1" = 100'

PLAN OF PROPOSED MINE ENTRY
 HESS AND HESS COAL CO.
 GRANT TWP INDIANA COUNTY, PA.
 AUGUST 1, 1952
 PAUL L. BOTSFORD REG. PRO. ENGR.

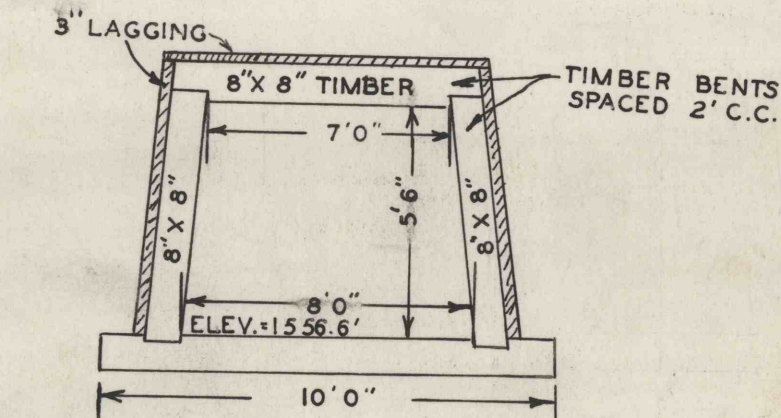


DISCLAIMER: This map is provided as a courtesy to the Pennsylvania Bureau of Deep Mine Safety by American Premier Underwriters, Inc. (f/k/a The Penn Central Railroad Corporation) and its subsidiary United Railroad Corp., which own or owned, but do not operate, the coal assets depicted hereon.

American Premier Underwriters, Inc. and United Railroad Corp. disclaim any representation or duty to any person as to the accuracy or completeness of this map or its fitness for any particular mining, safety or real estate related purpose. Any person who uses this map for any reason undertakes an independent duty to verify its accuracy and completeness, assumes all risks of its use, and agrees to hold American Premier Underwriters, Inc., United Railroad Corp. and their respective affiliates, shareholders, directors, officers and employees harmless from damage or liability arising from its use.



SECTION A-A
SCALE 1" = 10'



MINE ENTRY CROSS SECTION
SCALE 1" = 4'