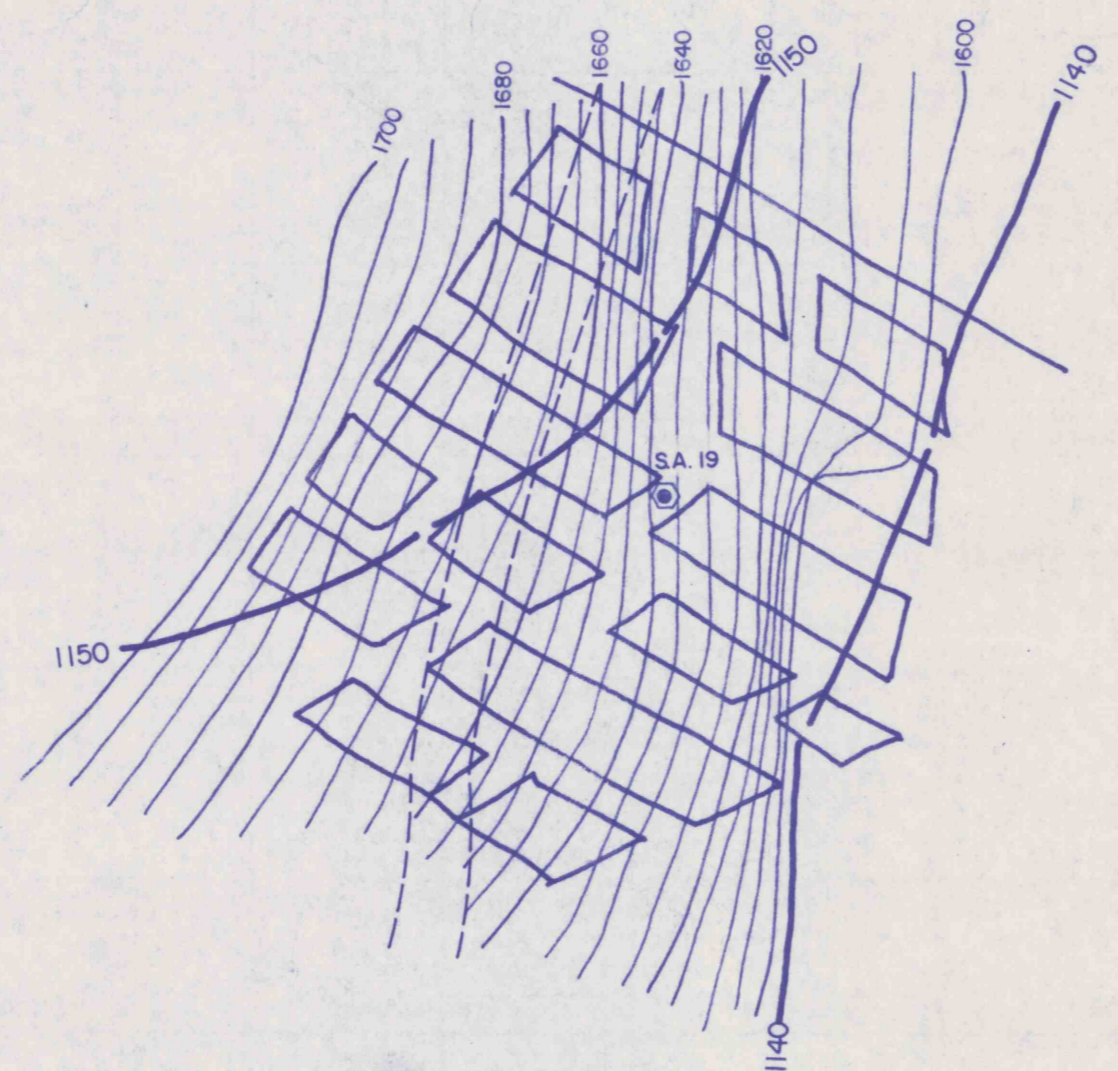
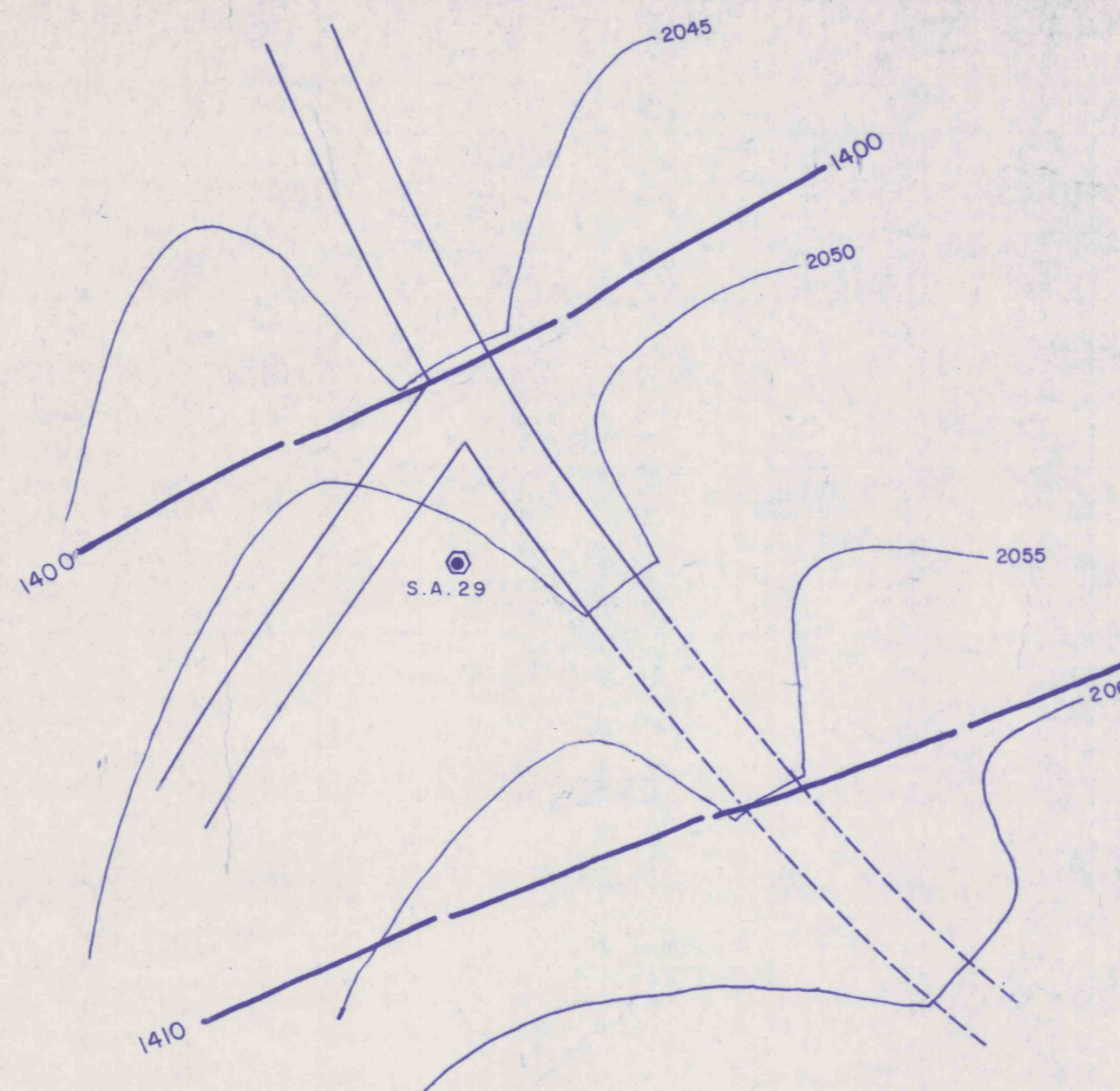


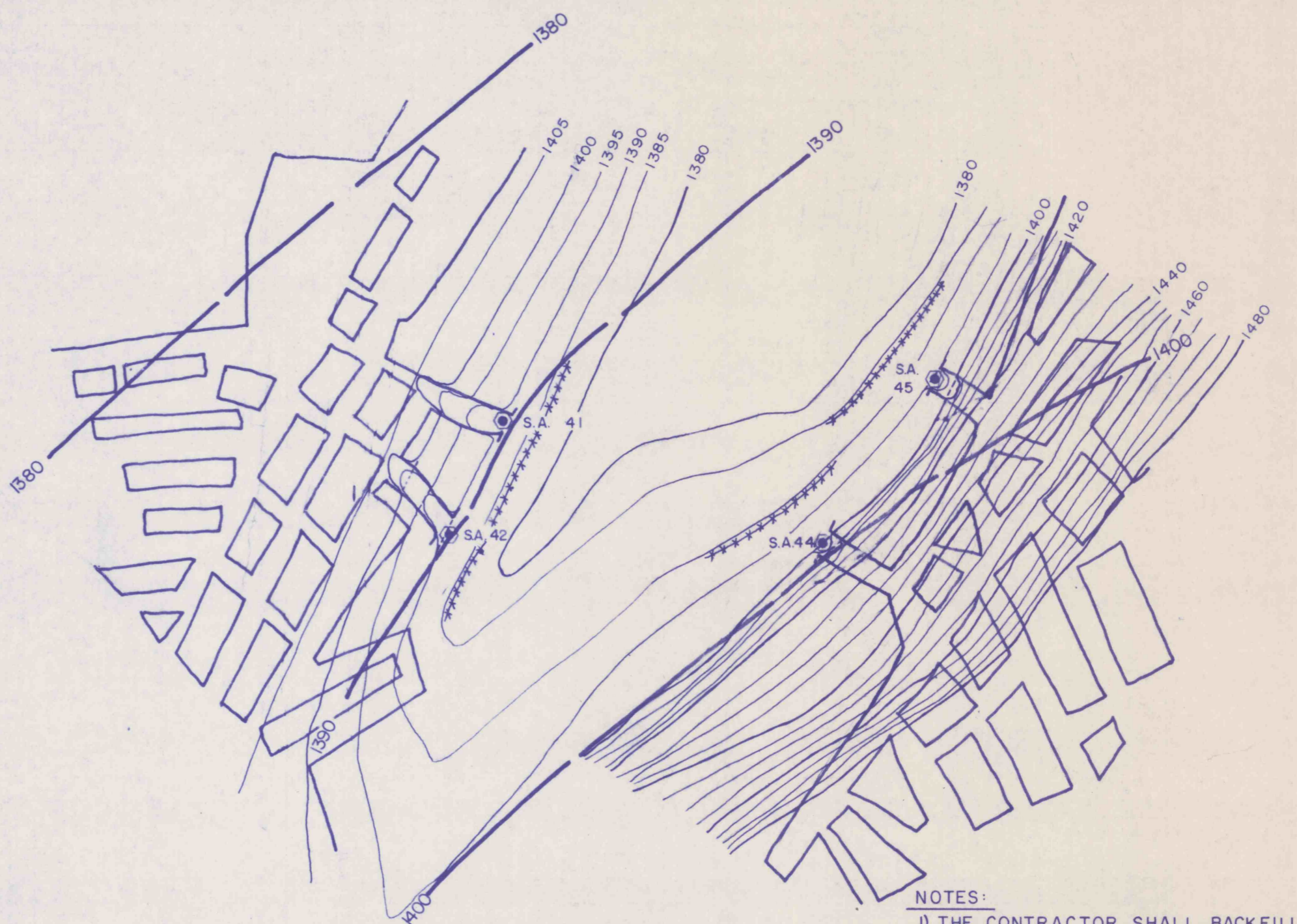
SEAL AREA 31-(SID 104)-NO 4 SUBST. POWERHOLE
SEAL AS PER DETAILS, SHEET NO. 38



SEAL AREA 19-NO 5 POWERHOLE
SEAL AS PER DETAILS, SHEET NO. 38



SEAL AREA 29-NO 10 POWERHOLE
SEAL AS PER DETAILS, SHEET NO. 38



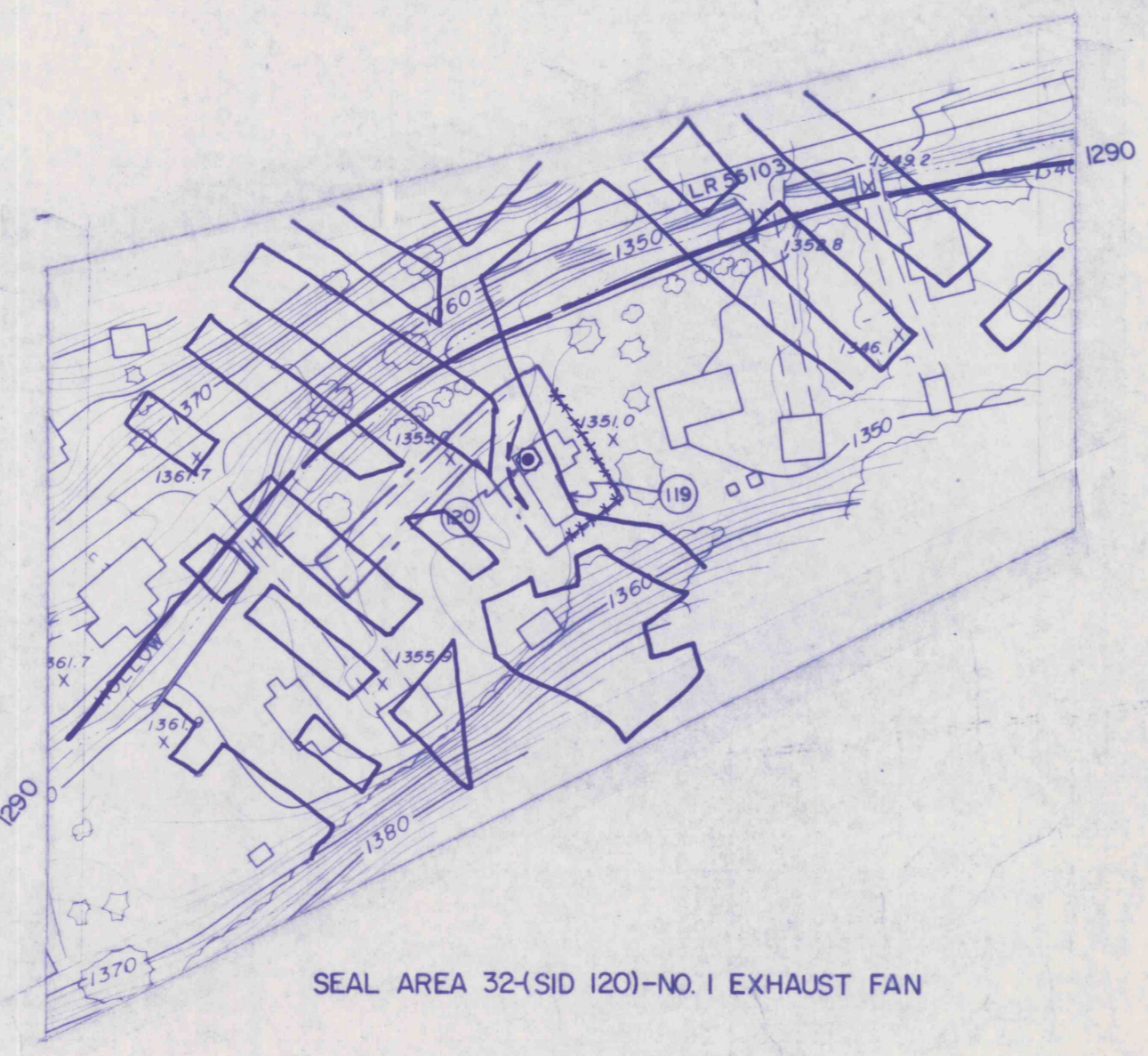
SEAL AREA 41-BIRD NO. 1 DRIFT
SEAL AREA 42-BIRD NO. 1 DRIFT
SEAL AREA 44-BIRD NO. 5 DRIFT
SEAL AREA 45-BIRD NO. 5 DRIFT

NOTES:
1) THE CONTRACTOR SHALL BACKFILL THE SUBSIDED DRIFT ENTRIES TO APPROXIMATE ORIGINAL CONTOURS USING THE APPROXIMATE INERT FILL QUANTITIES:
S.A. 41: 250 c.y.
S.A. 42: 250 c.y.
S.A. 44: 55 c.y.
S.A. 45: 100 c.y.
2) ALL DISTURBED / REGRADED AREAS SHALL BE REVEGETATED AS PER TECHNICAL SPECIFICATIONS AND JUTE MATTING OR EQUAL USED FOR EARTH STABILIZATION.

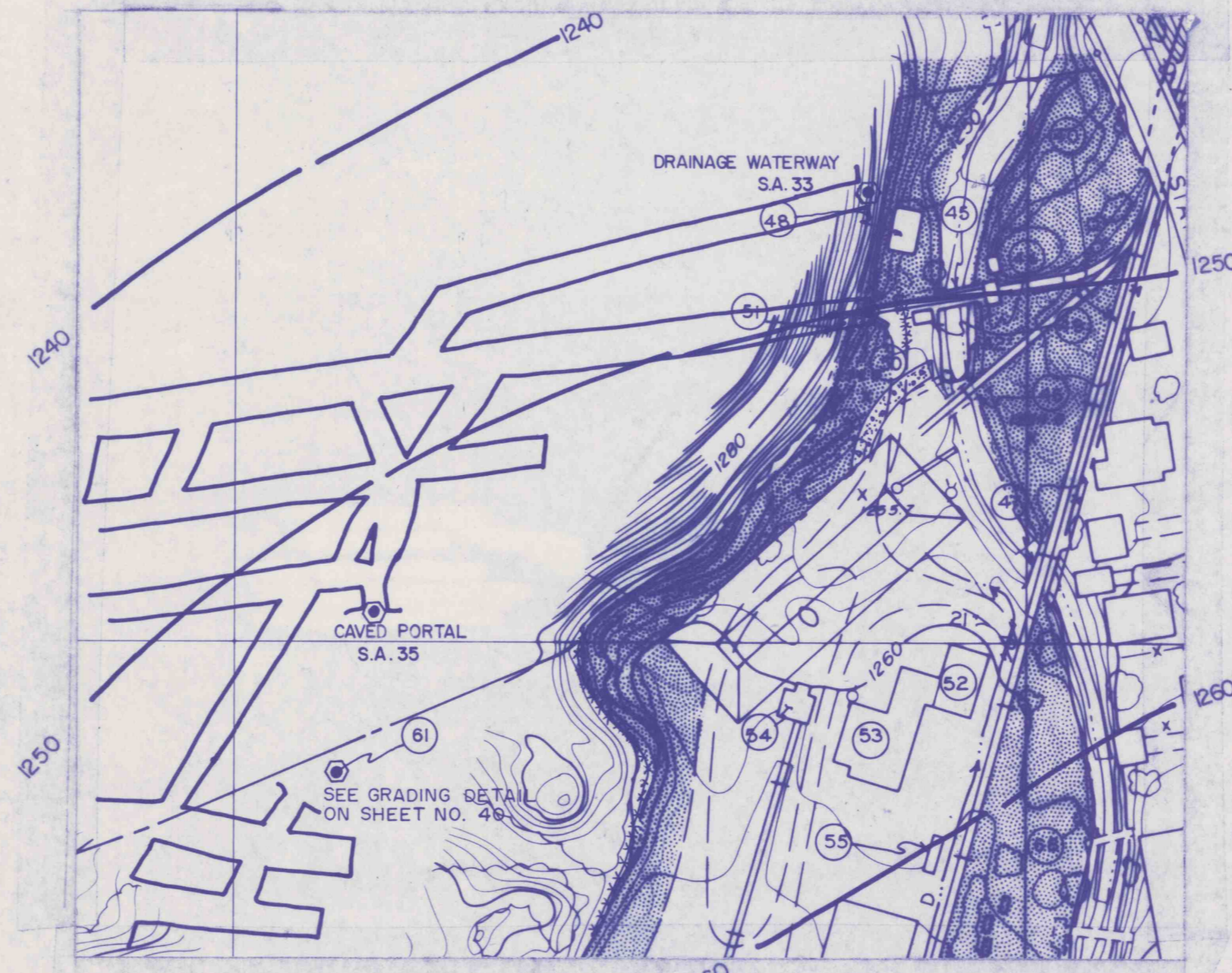
LEGEND

- ***** SOIL EROSION AND SEDIMENTATION CONTROL
- PROPOSED DIVERSION DITCH

NOTE:
SEE SHEET NO. 32 FOR REQUIRED SHAFT SEALING AND BACKFILLING DETAILS FOR SEAL AREA No. 32.

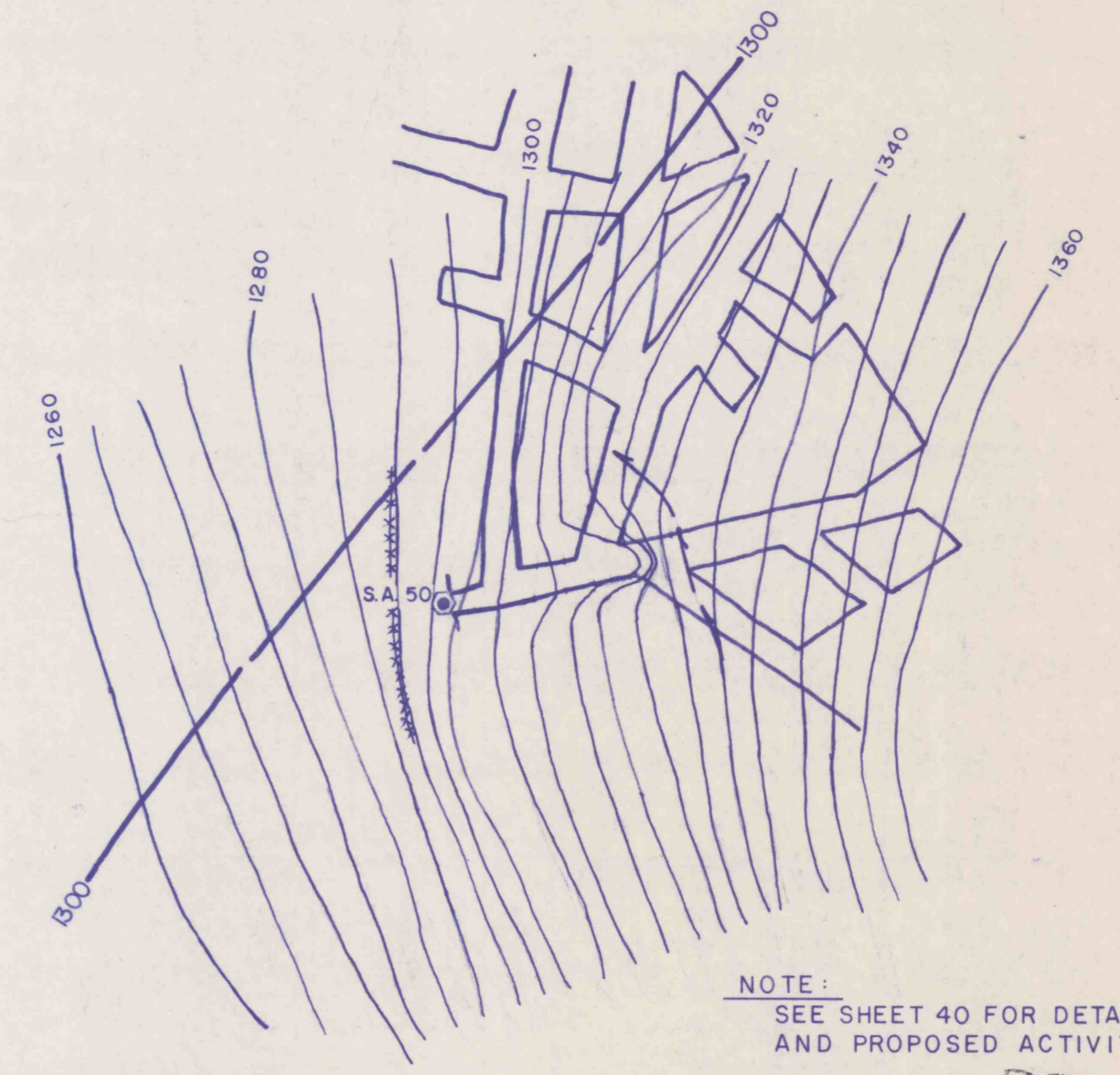


SEAL AREA 32-(SID 120)-NO. 1 EXHAUST FAN



SEAL AREA 33 DRAINAGE WATERWAY
SEAL AREA 34 (SID 51) DRIFT PORTAL
SEAL AREA 35 CAVED PORTAL
SEAL AREA 36 (SID 61) MANWAY PIPE

NOTES:
1) SEAL AREA No. 33:
SEE SEALING DETAILS, SHEET No. 42
2) SEAL AREA No. 34:
SEE SEALING DETAILS, SHEET No. 41
3) SEAL AREA No. 35:
NO WORK REQUIRED
4) SEAL AREA No. 36:
SEE GRADING DETAILS ON SHEET No. 40.



SEAL AREA 50-BIRD NO. 5 MAIN DRIFT

NOTE:
SEE SHEET 40 FOR DETAILED EXISTING CONDITIONS AND PROPOSED ACTIVITIES.

RECEIVED
SEP 29 1989

Dept. of Environmental Resources
McMurray District Office

REVISIONS	ISSUED	SEAL AREA SITE PLANS	SCALE 1"=100'
		BIRD NO. 2 MINE BIRD COAL COMPANY SITUATE STONY CREEK TOWNSHIP, CAMBRIA CO., PA CONEMAUGH TWP., SOMERSET CO., PA.	
APPROVED:	JOB 86003	GWIN, DOBSON & FOREMAN, INC. CONSULTING ENGINEERS ALTOONA, PENNSYLVANIA	SHEET NO. 24
	FILE	DRAWN BY: BLK CHECKED:	