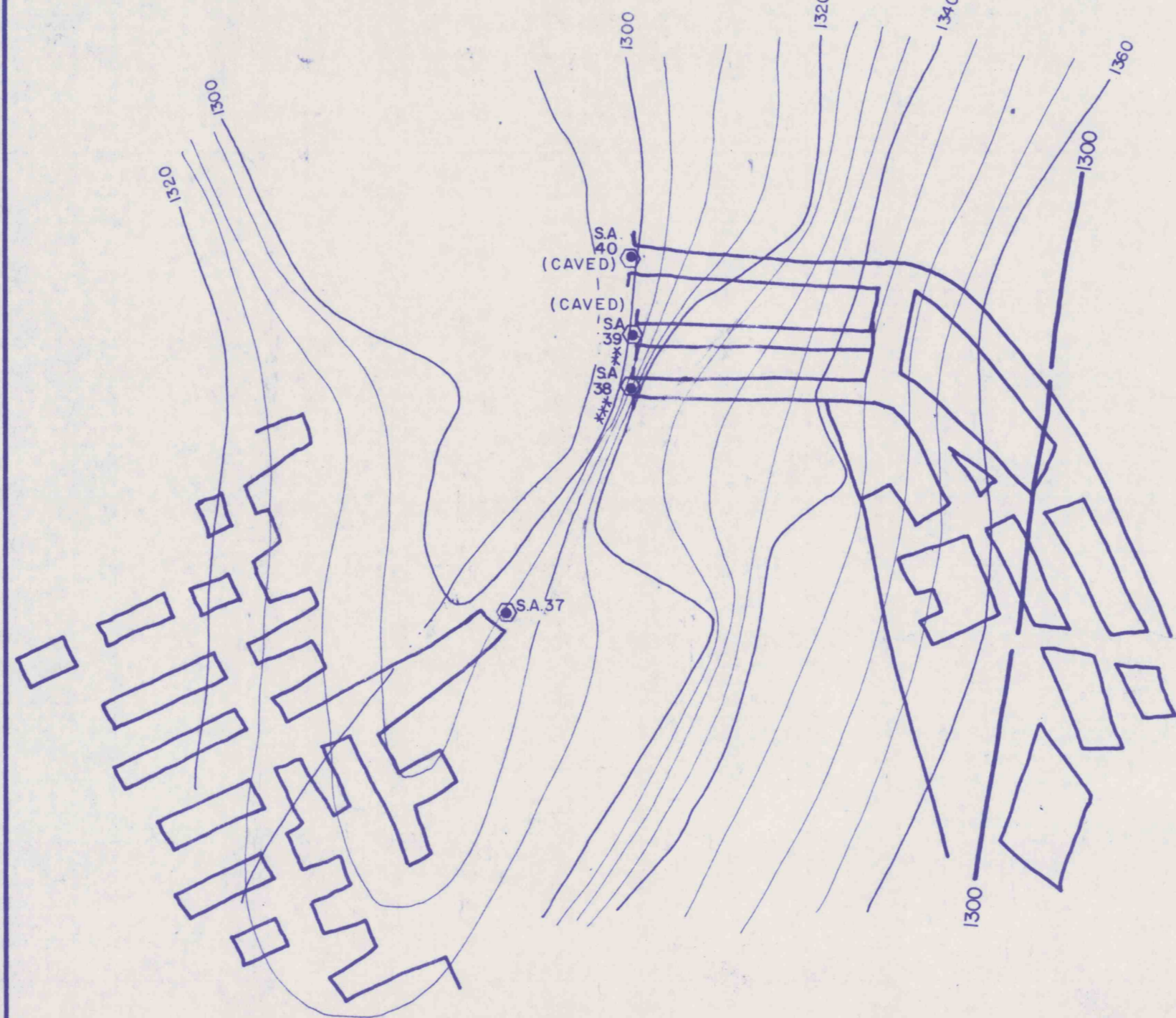


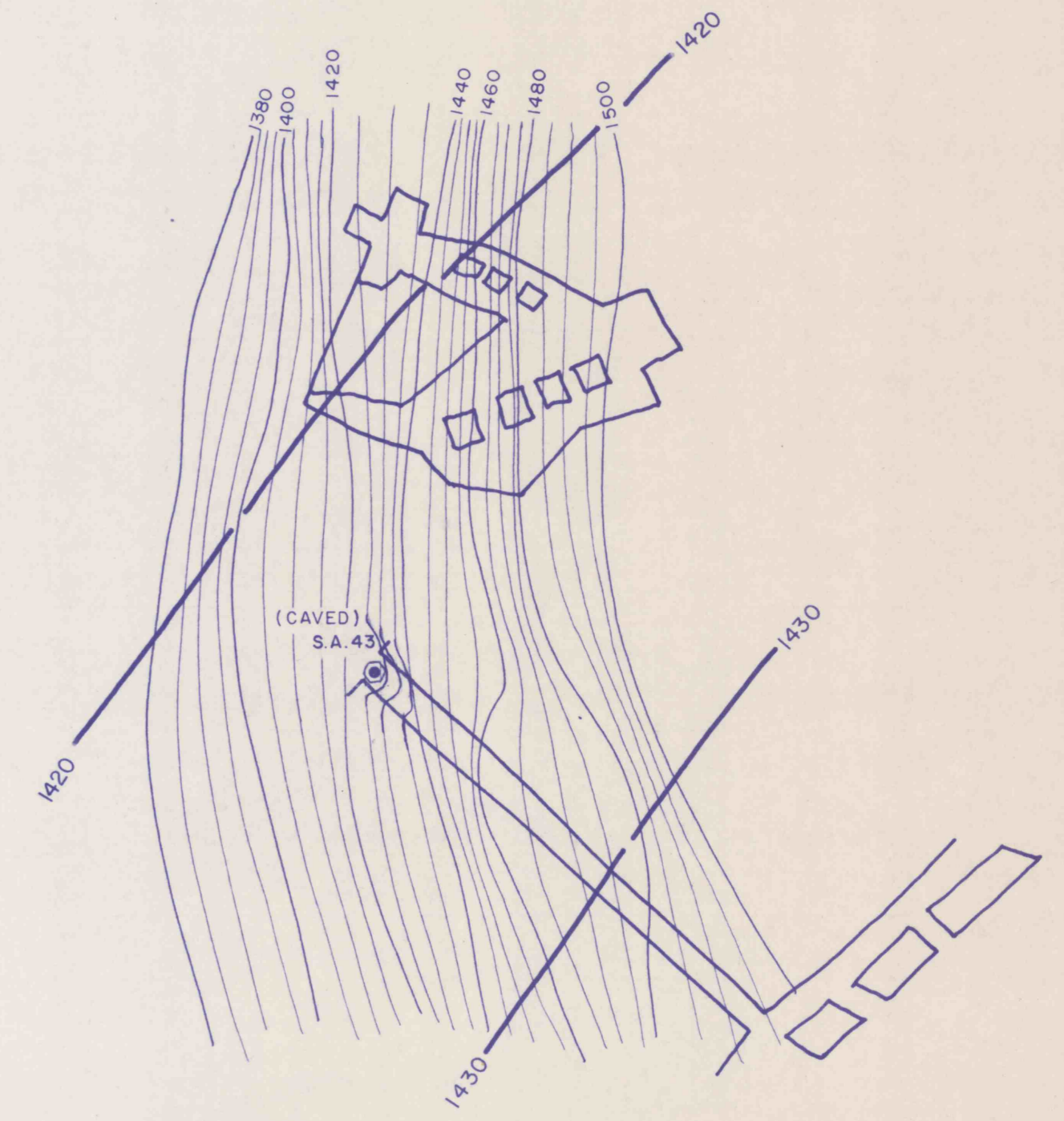
NOTES:
 1) FOR MORE DETAILED EXISTING CONDITIONS AND PROPOSED RECLAMATION ACTIVITIES AT SEAL AREA NO. 47, SEE SHEET NO. 40.
 2) NO RECLAMATION ACTIVITIES ARE REQUIRED AT SEAL AREAS 46, 48 & 49.

SEAL AREA 46 - BIRD NO. 5 DRIFT
 SEAL AREA 47 - BIRD NO. 5 DRIFT
 SEAL AREA 48 - BIRD NO. 5 DRIFT
 SEAL AREA 49 - BIRD NO. 5 DRIFT

NOTES:
 1) NO RECLAMATION ACTIVITIES ARE REQUIRED AT SEAL AREAS NO. 37, 39, & 40.
 2) REMOVE EXISTING HEADWALL STRUCTURE TO 2' BELOW GRADE AND BACKFILL APPROXIMATELY 10 L.F. TO CONCRETE SEAL AT SEAL AREA NO. 38.



SEAL AREA 37 - BIRD NO. 1 AIRSHAFT
 SEAL AREA 38 - BIRD NO. 1 DRIFT
 SEAL AREA 39 - BIRD NO. 1 DRIFT
 SEAL AREA 40 - BIRD NO. 1 DRIFT



SEAL AREA 43 - BIRD NO. 5 DRIFT

NOTE:
 NO RECLAMATION ACTIVITIES ARE REQUIRED AT THIS SEAL AREA.

LEGEND
 ***** SOIL EROSION AND SEDIMENTATION CONTROL
 ——— PROPOSED DIVERSION DITCH

RECEIVED
 SEP 29 1989

Dept. of Environmental Resources
 McMurray District Office

APPROVED:	REVISIONS	ISSUED	SEAL AREA SITE PLANS	SCALE 1" = 100'
			BIRD NO. 2 MINE BIRD COAL COMPANY SITUATE STONY CREEK TOWNSHIP, CAMBRIA CO., PA. CONEMAUGH TWP, SOMERSET CO., PA.	
		JOB 86003	GWIN, DOBSON & FOREMAN, INC. CONSULTING ENGINEERS ALTOONA · PENNSYLVANIA	SHEET NO. 26
		FILE	DRAWN BY: BLK CHECKED:	