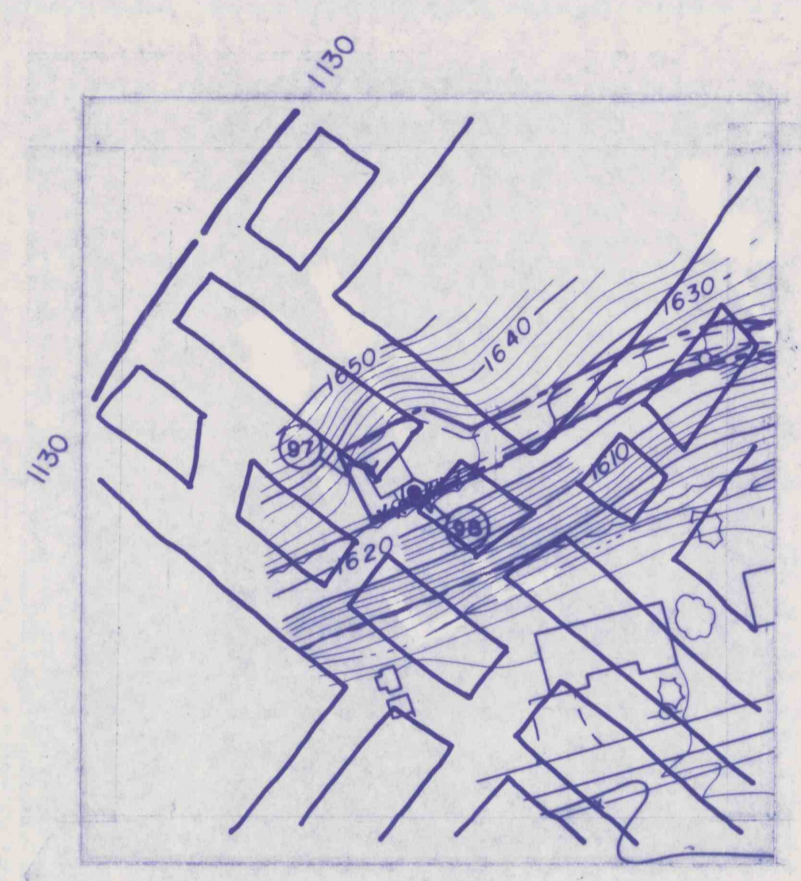
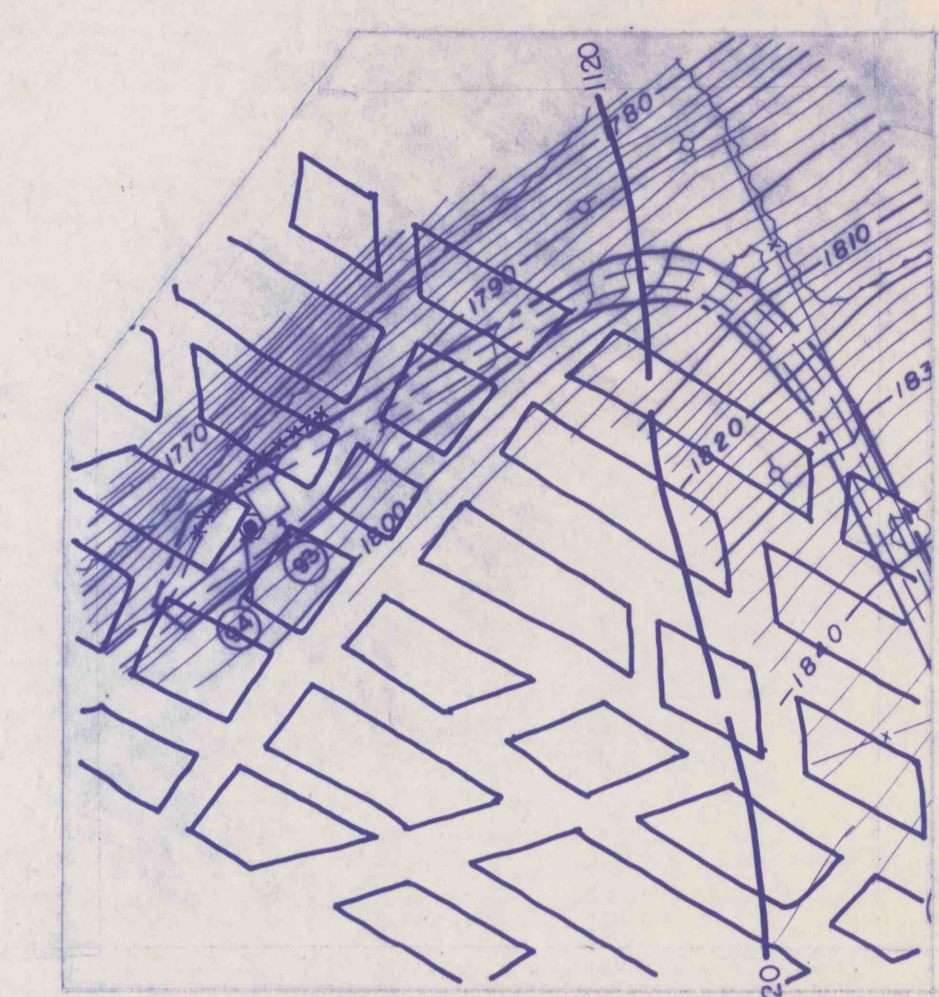


SEAL AREA 17-(SID 113) - WEBER AIRSHAFT
 SEAL AREA 21-(SID 109) - NO. 15 POWERHOLE
 SEAL AREA 22-(SID 108) - NO. 2 SUBST. POWERHOLE
 SEAL AREA 23-(SID 110) - NO. 2 EXHAUST SHAFT

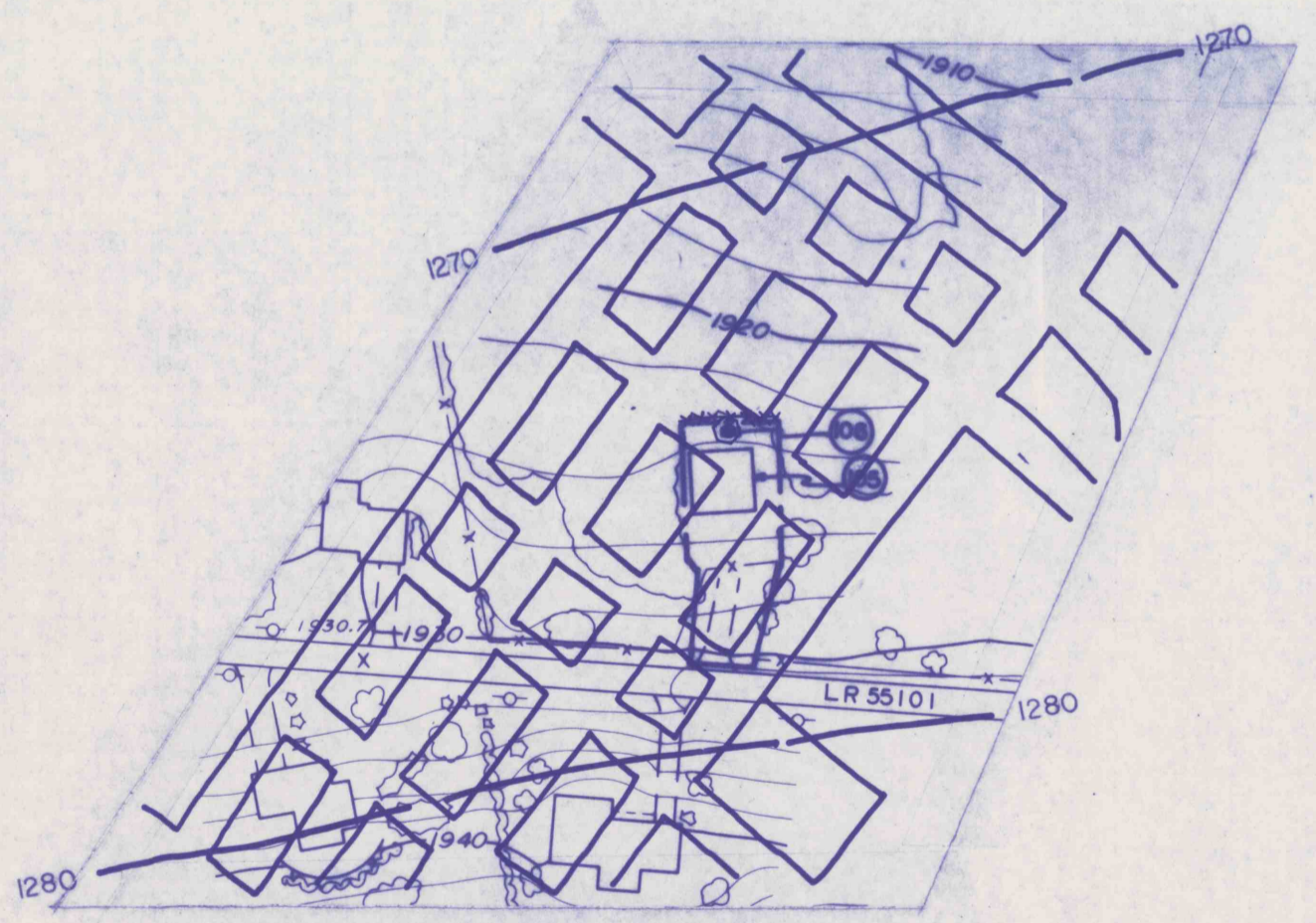
- NOTES:
- 1) SEAL AREA 17:
SEE SHEET NO. 37 FOR REQUIRED SHAFT SEALING & BACKFILLING DETAILS.
 - 2) SEAL AREA 23:
SEE SHEET NO. 33 FOR REQUIRED SHAFT SEALING & BACKFILLING DETAILS.
 - 3) SEAL AREA 21 & 22:
SEAL AS PER DETAILS, SHEET No. 38.



SEAL AREA 24-(SID 98)-NO. 11 POWERHOLE
 SEAL AS PER DETAILS, SHEET NO. 38



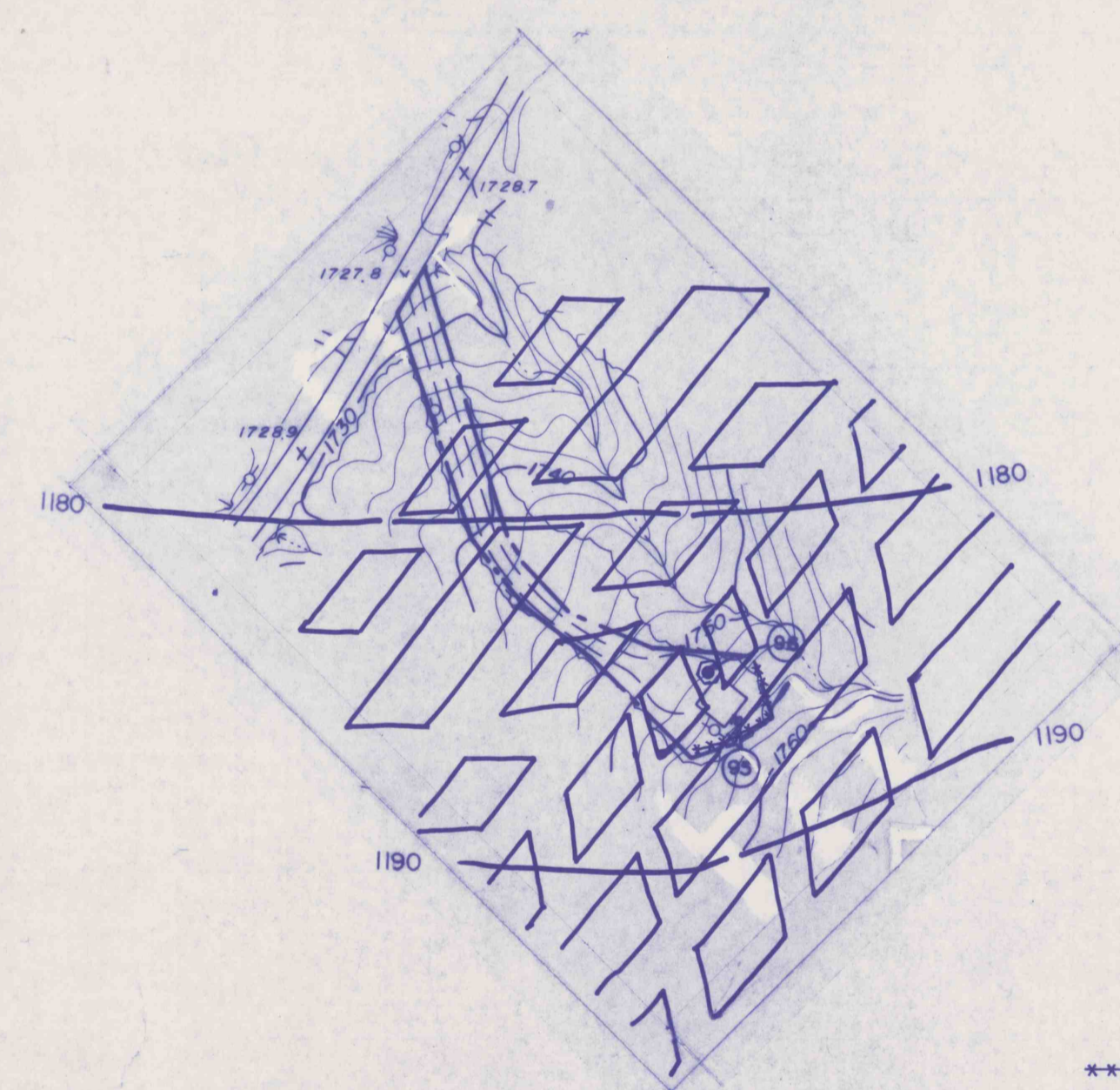
SEAL AREA 20-(SID 94) - NO. 14 POWERHOLE
 SEAL AS PER DETAILS, SHEET NO. 38



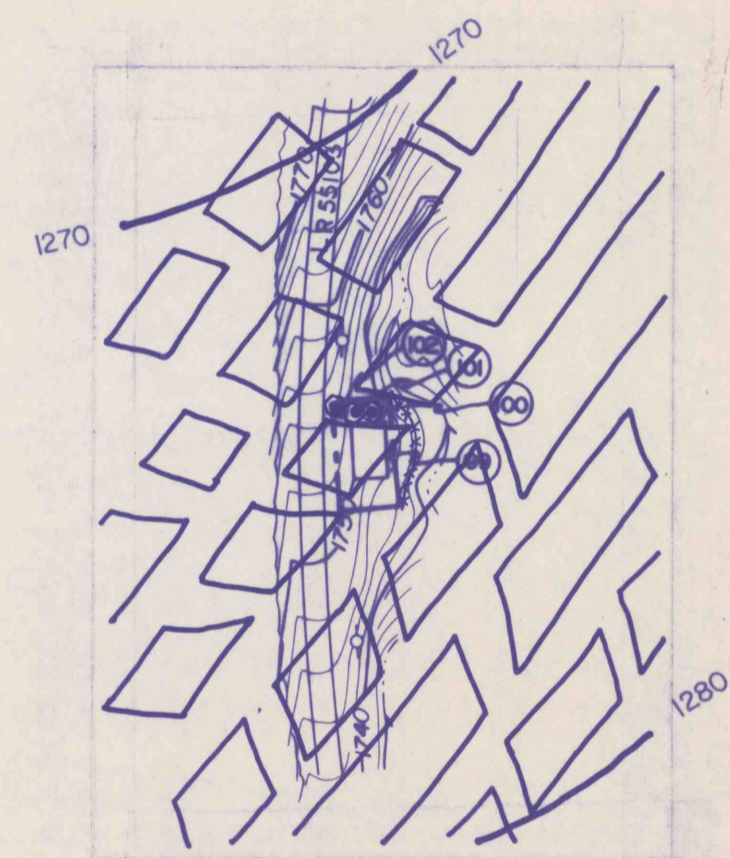
SEAL AREA 30-(SID 106) NO. 3 SUBST. POWERHOLE
 SEAL AS PER DETAILS, SHEET NO. 38



SEAL AREA 18-(SID 115) DRAINHOLE
 SEAL AS PER DETAILS, SHEET NO. 38



SEAL AREA 25-(SID 96) - NO. 12 POWERHOLE
 SEAL AS PER DETAILS, SHEET NO. 38



SEAL AREA 26-(SID 101) - NO. 6-A POWERHOLE
 SEAL AREA 27-(SID 100) - NO. 6 SUBST. POWERHOLE
 SEAL AREA 28-(SID 102) - NO. 6 WATERHOLE
 SEAL AS PER DETAILS, SHEET NO. 38

LEGEND
 ***** SOIL EROSION AND SEDIMENTATION CONTROL
 - - - - - PROPOSED DIVERSION DITCH

RECEIVED
 SEP 29 1989
 Dept. of Environmental Resources
 McMurray District Office

REVISIONS	ISSUED	SEAL AREA SITE PLANS	SCALE 1"=100'
		BIRD NO. 2 MINE BIRD COAL COMPANY SITUATE STONY CREEK TOWNSHIP, CAMBRIA CO., PA. CONEMAUGH TWP. SOMERSET CO., PA.	
APPROVED:	JOB 86003	GWIN, DOBSON & FOREMAN, INC. CONSULTING ENGINEERS ALTOONA, PENNSYLVANIA	SHEET NO. 25
	FILE	DRAWN BY: BLK CHECKED:	

REPRODUCED BY THE U.S. GOVERNMENT FROM THE ORIGINAL DRAWING